



**NORTH FALLS**

*Offshore Wind Farm*

**CONSULTATION  
REPORT  
APPENDIX F.15 TO F.30  
PART 3**

*Document reference: 4.1.3.3.1*

*Volume: 4*

*APFP Regulation: 5(2)(q)*

*Date: October 2024*

*Revision: 1*

*NorthFallsOffshore.com*





**NORTH FALLS**

*Offshore Wind Farm*

## Project Reference: EN010119

<b>Project</b>	North Falls Offshore Wind Farm
<b>Document Title</b>	Consultation Report Appendix F.15 to F.30 (Part 3)
<b>Document Reference</b>	4.1.3.3.1
<b>APFP Regulation</b>	5(2)(q)
<b>Revision</b>	1
<b>Supplier Document ID</b>	CAMCR0724

This document and any information therein are confidential property of North Falls Offshore Wind Farm Limited and without infringement neither the whole nor any extract may be disclosed, loaned, copied or used for manufacturing, provision of services or other purposes whatsoever without prior written consent of North Falls Offshore Wind Farm Limited, and no liability is accepted for loss or damage from any cause whatsoever from the use of the document. North Falls Offshore Wind Farm Limited retains the right to alter the document at any time unless a written statement to the contrary has been appended.

<b>Revision</b>	<b>Date</b>	<b>Status/Reason for Issue</b>	<b>Originator</b>	<b>Checked</b>	<b>Approved</b>
0	July 2024	Submission	Camargue Group Limited	NFOW	NFOW
1	October 2024	S51 advice	Camargue Group Limited	NFOW	NFOW



## NORTH FALLS

*Offshore Wind Farm*

### **F Appendices (continued)**

F.15	Stage 3 (statutory) consultation letter to landowners	843
F.16	Community newsletter Edition 2 Spring 2023	847
F.17	Community newsletter Edition 3 Autumn 2023	854
F.18	Stage 3 (statutory) consultation landowner factsheet and cover letter	863
F.20	Guide to PEIR for stage 3 (statutory) consultation	871
F.21	Stage 3 (statutory) consultation project maps	881
F.22	List of stakeholders consulted for stage 3 (statutory) consultation	884
F.23	Hard to reach consultees for stage 3 (statutory) consultation	890
F.24	Email to stakeholders at stage 3 (statutory) consultation	892
F.24.1	Letter to stakeholders at stage 3 (statutory) consultation launch	914
F.25	Reminder email to stakeholders at stage 3 (statutory) consultation	918
F.27	Stage 3 (statutory) consultation site notices for unregistered land parcels	920
F.28	Section 46 notification	922
F.29	Planning Inspectorate's acknowledgement of section 46 notification	925
F.30	February 2022 early draft SoCC	928



# NORTH FALLS

*Offshore Wind Farm*

## APPENDIX F

### F.15

*Stage 3 (statutory) consultation  
letter to landowners*



## NORTH FALLS

*Offshore Wind Farm*

Our Reference:

160194

Contact:

Daniel Harper

Date: Tuesday 16 May 2023

### *Statutory Consultation: North Falls Offshore Wind Farm Section 42 and Section 44 of the Planning Act 2008*

Dear

We are writing to consult with you on the proposed North Falls Offshore Wind Farm (“North Falls” or “the Project”) that is being promoted by North Falls Offshore Wind Farm Limited (“the Applicant”), an equal joint venture between SSE Renewables and RWE.

The consultation includes:

- Prescribed bodies, host and neighbouring authorities, and any persons with an interest in the land affected by the Project under Section 42 of the Act;
- Affected local communities under Section 47 of the Act; and
- General publicity under Section 48 of the Act.

The consultation commences on 16 May 2023 and will close at 23.59 on 14 July 2023. Please see below for information on how to view and comment on the Project.

#### **Project Description**

North Falls is a proposed offshore wind farm located in the southern North Sea, approximately 20 kilometres from the East Anglia coast at its nearest point. An offer has been accepted from National Grid for an onshore grid connection in Tendring, North Essex, approximately 20 kilometres from its likely landfall location for that connection option near Frinton-on-Sea. North Falls is set to support the UK’s target of 50GW of installed offshore wind capacity by 2030.

The Project comprises:

- Up to 72 offshore wind turbine generators
- Up to two offshore substation platforms
- Platform interconnector cables
- Inter-array cables
- Three options for transmission infrastructure:
  - Option 1: Onshore electrical connection at a National Grid connection point within Tendring, Essex, with a project alone onshore cable route and onshore substation infrastructure;
  - Option 2: Onshore electrical connection at a National Grid connection point within Tendring, Essex, sharing all or part of an onshore cable route with separate onshore export cables with another project (such as Five Estuaries) where practicable, or

- Option 3: Offshore electrical connection supplied by a third-party electricity network provider. Such a connection will potentially be identified through the Offshore Transmission Network Review (OTNR) process.

It is anticipated the proposed development consent order (DCO) will, among other things, authorise:

- The construction, operation and maintenance and decommissioning of an offshore wind generating station and associated development;
- The compulsory acquisition of land, and imposition of restrictions, powers to override suspend or extinguish rights over land and the temporary use of land;
- The application, modification and/or disapplication of legislation relevant to the Project including that relating to the compulsory acquisition of land; and
- Such ancillary, incidental and consequential provisions, licences, property rights, permits and consents as are necessary and/or convenient.

More detailed information on the Project is provided within the consultation materials.

### **Application for a Development Consent Order**

The Project will have a generating capacity exceeding 100MW and is therefore classified as a Nationally Significant Infrastructure Project (NSIP) for which a DCO is required. The DCO application will contain full details of the Project and will be accompanied by an Environmental Statement in accordance with the Act and the EIA Regulations.

The Project is currently in the pre-application phase of the DCO application process. In accordance with the Act, the Applicant is required to consult on the proposed application prior to submission, and for the application to have regard to consultation responses. A consultation report outlining the consultation processes undertaken, and how the responses have informed the final design of the Project will be included in the DCO application documents.

If the DCO application is accepted, the Planning Inspectorate will process and examine the application and make a recommendation for approval or refusal to the Secretary of State for Energy Security and Net Zero. The final decision to approve or refuse the application will be made by the Secretary of State.

### **Your Interest in the Land**

This letter is being sent to all persons required to be consulted under Section 42(1)(d) and Section 44 of the Act. Accordingly, you are being consulted on the Project because we have identified that you may have an interest in land which falls within the proposed Application boundary, or you have an interest in land which could potentially be affected by the construction or use of the Project and which may entitle you to make a claim<sup>1</sup> under Section 44(4) of the Act (which may fall outside the Application boundary).

Please refer to the plans included with the consultation materials which show the proposed Application boundary. This information is considered up to date at the time the consultation takes place, however this is an ongoing process and the identification of all relevant land interests will continue throughout the pre-application process.

### **Consultation Materials**

The Applicant has prepared a Preliminary Environmental Information Report (PEIR) which has been informed by the Scoping Opinion issued by the Planning Inspectorate and which reports the results of the Environmental Impact Assessment (EIA) undertaken to date. The PEIR forms the basis of this consultation and also includes a non-technical summary. Its purpose is to enable consultees to understand the likely significant environmental effects of the Project and to inform consultation responses. Please note however that EIA is an ongoing process and so the information contained within the PEIR is subject to change as the design of the Project develops.

---

<sup>1</sup> A claim under Section 44(4) of the Act can include (1) claims for compensation where satisfaction not made for the taking, or injurious affection, of land subject to compulsory purchase; (2) claims for compensation for depreciation of land value by physical factors (e.g. noise) caused by use of public works; and (3) claims for compensation where there is no right to claim in nuisance.

From the start of the statutory consultation on 16 May 2023, the North Falls PEIR, a non-technical summary providing an overview of the proposals, consultation booklet and other documents, plans and maps showing the nature and location of the Project will be available to view and download free of charge via the consultation portal ([www.stat.northfallsoffshore.com](http://www.stat.northfallsoffshore.com)), which can also be accessed via the project website ([www.northfallsoffshore.com](http://www.northfallsoffshore.com)). The PEIR chapters and reports can be accessed directly ([www.northfallsoffshore.com/peir](http://www.northfallsoffshore.com/peir)). Hard copies will also be available on request; details of how to request hard copies and any related charges, are set out in the Section 48 Notice. These documents, plans and maps will be available on the consultation portal until at least the end of the statutory consultation period at 11.59pm on 14 July 2023.

Please find enclosed a copy of the notice which publicises the consultation, as required by Section 48 of the Planning Act 2008 and Regulation 13 of the EIA Regulations. This includes further details of how to obtain copies of the consultation materials, together with other relevant information including the consultation events taking place.

### **How to Respond to the Consultation**

Responses to this consultation must be received no later than 11:59pm on 14 July 2023. Responses received after this time may not be considered.

There are several ways to submit responses: via a feedback form or the interactive map on the project consultation portal ([www.stat.northfallsoffshore.com](http://www.stat.northfallsoffshore.com)); by email ([contact@northfallsoffshore.com](mailto:contact@northfallsoffshore.com)), or in writing (FREEPOST NORTH FALLS). Copies of the feedback form will also be available at the consultation events and can be submitted in person.

The above contact details can also be used for any enquiries relating to the documents, plans and maps accompanying this consultation.

When providing your response, please include your name and contact details and confirm the nature of your interest in the Project.

Please note that representations received and any accompanying personal data, such as the names of persons over 18, may be made public. If you do not wish personal information to be made public you should state that when submitting your representation. Responses and personal data may be provided to the Secretary of State, the Planning Inspectorate or other relevant statutory authorities in accordance with the requirements of the Planning Act 2008. To find out about how the Applicant will manage your personal data please refer to our Privacy Notice ([stat.northfallsoffshore.com/privacy](http://stat.northfallsoffshore.com/privacy))

Yours sincerely



Daniel Harper  
Consents Manager  
North Falls Offshore Wind Farm

Enc. Section 48 Notice



# NORTH FALLS

*Offshore Wind Farm*

## APPENDIX F

### F.16

*Community newsletter Edition 2  
Spring 2023*





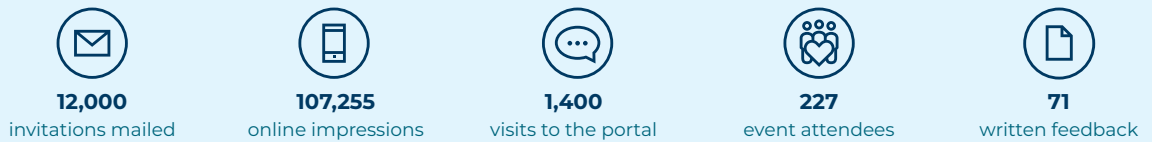
Welcome to the second newsletter for North Falls, an offshore wind project now under development

North Falls is a proposed offshore wind farm development with its offshore site in the southern North Sea and its onshore infrastructure

likely to be located in North Essex. The offshore site is between 22 and 43 km from the coast and is split across two zones that together total 150 km<sup>2</sup>. It is an extension project to the existing 504MW Greater Gabbard Offshore Wind Farm and is owned in an equal joint venture by two major energy companies: SSE Renewables and RWE.



## Second phase of consultation completed



North Falls undertook its second phase of consultation in late 2022, that included five face-to-face events, two webinars and a dedicated online portal that had 1400 visits. The information shared as part of that consultation, as well as feedback from it, can be viewed in the [consultation portal](#) of our website.

A total of 227 people attended one or more of the public events and written input, including feedback forms, freepost postcards was received from a total of 71 individuals, organisations and statutory bodies.

A wide range of issues and questions was brought up during the consultation that are being considered by the project team as part of its ongoing work to prepare the preliminary environmental information report, the next phase of the project's development.

This newsletter provides an overview of the consultation feedback, responses to specific queries and a summary how North Falls will take the responses into account. More detail can also be found on the 'frequently asked questions' page of the project website, which has been updated to cover the topics and issues that were most commonly brought up including traffic management, grid connection and construction impacts.

The recently completed consultation will help the project to prepare for the statutory consultation phase which is due to take place in late spring/early summer this year.

Although the consultation is the key point at which the project seeks input from stakeholders including the local community, the team welcomes questions and insights at any time via the contact details listed on the back page.

### Next steps for the project

In late March, North Falls will publish its Statement of Community Consultation which details the project's approach to consultation including who will be consulted and how. It will be available online, at selected locations and in printed version. To receive a copy, please send your details

via one of the methods on the back page, specifying if you would prefer it electronically or by post.

The North Falls Preliminary Environmental Impact Report will be published this spring and will be the subject of the statutory consultation phase, which is set to run from late spring into summer, with dates being finalised shortly.

## North Falls Grid Connection



This page covers the questions that arose during the consultation that were intertwined around the topic of the project’s grid connection location.

Every offshore wind farm, in fact every potential generator, needs its power to enter the national grid so it can be transmitted on to homes, businesses and industry. Once

the power enters the national grid it can be directed where needed depending on demand at the time.

North Falls currently has accepted a grid offer from the National Grid to connect into a new substation near Ardleigh. National Grid owns the high-voltage electricity transmission network in England and Wales known as the national grid.

## Offshore Transmission Network Review

The project has noted the objections to the existing onshore grid connection location including concerns around cumulative impacts, substation size and potential for disruption, and has shared feedback with National Grid. However, as this is currently the only grid option available to North Falls, the project team continues to work on plans that will minimise the impacts at this location. This is with an awareness that for those affected it is not the preference, so the project in parallel remains committed to the Offshore Transmission Network Review (OTNR) process.

The OTNR aims to deliver changes around the grid that would pave the way for more coordinated grid opportunities. For example, for the project to connect offshore. The process of the OTNR is to identify and remove the complex commercial, legislative and regulatory hurdles needed to make this feasible. Changes include review of issues such as:

grid charging regulations; rules related to the government’s contract for difference auction bids and the offshore transmission owner (OFTO) obligations.

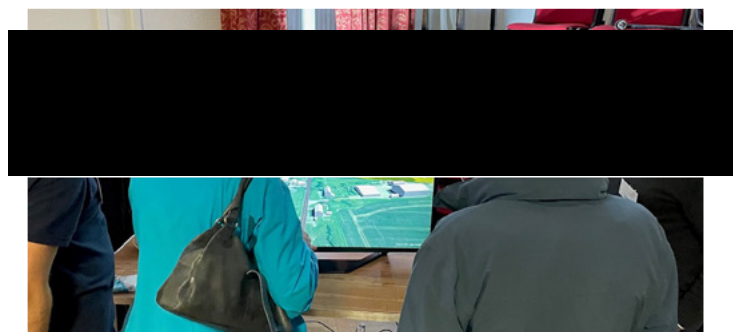
North Falls has committed to exploring coordinated network designs along with four other projects in East Anglia: Five Estuaries, National Grid Electricity Transmission’s Sea Link, and National Grid Ventures’ EuroLink and Nautilus, and we continue to work together on this process.

Alongside the complex grid-related processes, North Falls has an imperative to meet its operational date to contribute to the government’s 2030 targets, increasing the capacity of home-generated electricity and helping combat the effects of the climate emergency. For these reasons, to avoid project delays, North Falls must also continue to progress with plans related to the existing grid connection location.

## Cooperation with Five Estuaries

There were several questions posed during the consultation around how North Falls cooperates with Five Estuaries. Both projects have been offered a grid connection in the same location and due to this, North Falls and Five Estuaries continue to work closely on key elements such as cable corridor selection, grid connection, environmental surveys and by sharing stakeholder feedback, such as from our 2022 consultation.

[Five Estuaries](#) has advised it will hold its statutory consultation from 14 March until 12 May, 2023.



*A fly through virtual model of the proposed onshore infrastructure was a key focus during the project’s local consultation events, enabling visitors to picture the exact proposed cable corridor and substation zone.*

# North Falls Consultation Feedback



Numerous issues were raised during the consultation that will be covered more fully in the North Falls Preliminary Environmental Information Report which is now under production. This newsletter gives a high-level summary of the key issues raised, all of which will be considered as the proposals are progressed.

Issue raised	Actions
<b>Construction related</b>	
<p><b>Construction traffic</b></p> <p>Respondents raised concerns around construction traffic, recognising the local area has many narrow roads unsuitable for an increase in traffic. Particularly the likes of HGVs and in areas such as the village of Thorpe-le-Soken.</p>	<p>North Falls is working on an outline Construction Traffic Management Plan (CTMP) with details of how HGV and other vehicle movements will be controlled, monitored and enforced during construction. Amongst other details it will include how accesses and offsite highway works will be designed and how a temporary haul road within the construction corridor will minimise the amount of traffic on the local road network.</p>
<p><b>Flooding</b></p> <p>Points were raised during the consultation around flooding, both the possibility of it having an impact on construction, and conversely the impact construction could have on flooding.</p>	<p>North Falls has carried out assessments on geology, ground conditions, hydrology and flood risk for each of the project’s construction, operation and decommissioning phases. This information will inform a Flood Risk Assessment, which will establish whether the onshore infrastructure may be affected by current or future flooding, whether it will increase the flood risk elsewhere and what mitigation can be implemented to reduce it.</p>
<p><b>Access to footpaths, bridleways and the coastal promenade during construction</b></p> <p>People wanted to know what impact construction might have on recreational routes, such as the promenade between Frinton-on-Sea and Holland-on-Sea, bridleways and footpaths along the cable route.</p>	<p>We are identifying each recreational route in the area of our proposed construction works and will incorporate plans to minimise disruption either through use of specific construction techniques, alternative routes or by careful timing of activities.</p>
<p><b>Local ecology, birds and wildlife</b></p> <p>Some who provided consultation responses expressed concern about the impacts of construction on the local area’s ecology, wildlife and bird, with a particular focus on any endangered species.</p>	<p>Comprehensive ecological surveys have been undertaken across the whole proposed development area recording the presence of any habitat, bird species or wildlife, including insects, that is either protected in law or notable due to its rare, scarce or vulnerable status. This information is being used to inform the baseline for planning and full details of how it has been considered will be included in the preliminary environmental information report which we will consult on this year.</p>
<p><b>Use of HDD during construction</b></p> <p>While most feedback indicated people were content with the use of horizontal directional drilling during construction, there were some questions around the process and potential for noise or pollution.</p>	<p>More details around the specifics of the HDD process will be included in the upcoming PEIR but the concerns have been noted and will be addressed. For example, using an inert clay as drilling fluid and pre-work noise assessments to ascertain the need for temporary noise mitigation, which would be put in place for the duration of activity.</p>
<p><b>Communication during construction</b></p> <p>There were requests for clear communications during the construction period.</p>	<p>We can confirm this will be a priority to ensure the local community is aware of what is happening and when. Communications methodologies will include direct letters, newsletters and eNews, a 24-hour phone line and local briefings.</p>

# North Falls Consultation Feedback



## Issue raised

## Actions

### Cable route specific

<b>Water main north of Thorpe Road</b>	A specific point was brought up by a few respondents relating to a cast iron water main north of Thorpe Road.	As the water main north of Thorpe Lane is owned by the local water company, it would not be within the project's remit to remove or replace it. However, we will liaise with the water company so they are aware of our plans and the feedback we have received during consultation.
<b>Land drainage</b>	Some comments received related to water drainage in the area, with specific mention of a drainage ditch at Damants Farm Lane.	A land drainage consultant is being appointed to develop pre-and post-construction drainage plans in consultation with local landowners for all affected areas of the cable route. In addition, land drainage systems will be maintained during construction and land drainage reinstated once construction is complete as part of the reinstatement phase.
<b>Horsley Cross car boot sale</b>	More than one consultee mentioned the Horsley Cross car boot sale as something that could be impacted by the proposed cable route.	The fact this event happens each Friday during summer has been noted and will be referenced in our development consent order application. While the exact cable route has yet to be confirmed, if it is close to the car boot sale site, we would work with organisers to minimise any potential disruption from construction activity.
<b>Residential gardens</b>	There was concern for some residents about the cable route potentially going through back or front gardens.	We have reviewed the initial route which did include corners of some residential gardens; however, it has now been narrowed down and amended to completely avoid residential gardens.

### Substation specific

<b>Landscaping around substation</b>	Respondents asked about how the substation would be landscaped as there are concerns around its visual impact. There were also requests for more visualisations to understand the size and how it could look.	We are following National Infrastructure Commission guidance (published February 2020), which sets out design principles for nationally significant infrastructure projects such as North Falls. These mean we will consider the cumulative impacts of other proposed substations and factors including substation orientation, fencing and associated landscaping and vegetation such as native woodland planting and hedgerows. Our site selection principles are also aligned to the Horlock Rules guidance on siting and design of substations.  North Falls has noted requests to better understand how the substation could look and will include more photographs with examples of similar substations and visual representations in future consultation(s).
--------------------------------------	---	---

### Community

<b>Community support</b>	The consultation invited ideas as to how it could support the local community in future.	Plenty of good ideas about how North Falls can support the local community – such as sponsorships and local involvement – were submitted and will be explored as the project progresses.
--------------------------	--	--

For more details and to look at specific frequently asked questions and their answers, there is now an updated section on the [North Falls website](#).

## North Falls Project News

### Seeking beach hut owners



Beach huts at Frinton-on-Sea.

North Falls is keen to contact each beach hut owner at the Wallings, Frinton-on-Sea to ensure they are aware of the project and particularly of our future consultation activity. While the cables bringing the power to shore from the wind farm would be installed by a trenchless method underneath the huts with the area above remaining undisturbed, the properties are still classified as ‘affected’.

If you are, or know of, a beach hut owner who has not yet engaged with the project, we would very much like to hear from you via our land agents Dalcour McLaren who can be emailed: [northfalls@dalcourmclaren.com](mailto:northfalls@dalcourmclaren.com).



Great green bush cricket.

### Onshore ecology surveys

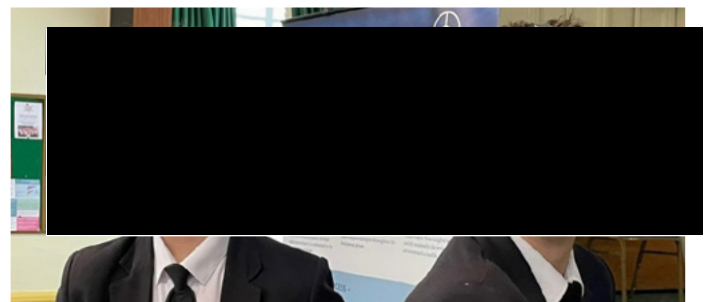
North Falls has concluded its onshore ecology surveys with the data gathered to be used as a basis for the project’s environmental impact assessment and mitigation proposals. As part of the activity more 20,000m of hedgerows were surveyed, 95 ponds were tested for presence of great crested newts, evidence of dormice was found in 12 hedgerows and water voles were found on three watercourses. The project as also undertaken extensive bird, invertebrate and vegetation surveys of Holland Haven Marshes Site of Special Scientific Interest (SSSI) over a period of two years.

The project’s site selection process will consider the sites where wildlife and birds have been found in order to avoid them wherever possible, in combination with construction methodologies that have the lowest impacts on wildlife, such as horizontal-directional drilling.

### Tendring student visit

The project team invited a group of Year 9 students from Tendring Technology College to visit its consultation in Thorpe-le-Soken, to find out more about the project, offshore wind and the myriad careers the sector offers. Offshore wind is set to more than triple in the years to 2030 to meet climate, energy security and cost goals, but to get there the industry needs thousands of new people to join its workforce. With more than 100 different types of job roles, each with a separate pathway in, it is key young people are aware of the opportunities.

Design & Technology teacher Graham Higgs was keen to give the students, who were on the cusp of selecting their GCSE subjects, a glimpse of a sector they may not have considered when thinking about their choices and future careers. The students were given a tour of the consultation materials, interacted with team members and ‘visited’ a wind farm via virtual reality headsets (photo below).



# Socio-economic benefit study results

North Falls has completed an initial socio-economic benefits study as part of its impact assessment to better clarify the type and extent of opportunities for the local area.

## Employment opportunities

In terms of employment, over the lifetime of the project there will be a wide range of direct, indirect and induced local jobs, from highly skilled to more manual roles. These jobs will be with the project team itself, as well as with businesses and contractors across the supply chain. The initial socio-economic benefit study has put the total number of annual full-time equivalent (FTE)\* local jobs at around 4000.

To ensure local people are well placed for these roles, as the project nears construction North Falls will implement careers awareness, training and skills initiatives with local schools, educational institutions and training providers.

\* Annual full-time equivalent (FTE) is a unit to measure employed people in a way that makes them comparable although they may work different number of hours per week.  
 \*\* Gross value add (GVA) measures the contribution to the economy of each individual producer, industry or sector.



**4,000**

Annual full-time equivalent jobs



**£400 million**

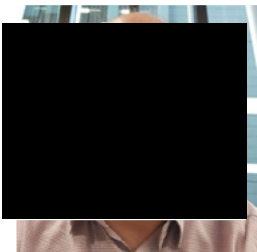
Gross value add for the local area

## Supply chain opportunities

In terms of local supply chain opportunities, the study calculated that the gross value add (GVA)\*\* for the local area as a result of North Falls could be up to £400 million for the lifetime of the project across the supply chain.

Local companies will be well placed to take advantage of the opportunities which will be promoted via both the project and its Tier 1 and 2 suppliers as the project progresses. Initiatives such as supply chain events, supplier registration and facilitated sessions will maximise transparency of opportunities when they arise.

## New project Director Andy Paine



In late 2022 North Falls welcomed new Project Director Andy Paine to lead the team as the work progresses towards submission of the project's development consent order application.

Andy is a Chartered Mechanical Engineer and Fellow of the I. Mech. E. with over 20 years' experience in the development and delivery of energy projects.

He said: "I joined as North Falls was in its second consultation phase which was an opportune time to learn quickly about the key stakeholder issues around the development and delivery of the project, which promises local opportunities while contributing to the UK's energy security and carbon emission reduction targets."

### Contact North Falls

To sign up for future newsletters or email updates please email your details to [contact@northfallsoffshore.com](mailto:contact@northfallsoffshore.com); call (24/7) **0800 254 5340** or post to: **Freepost North Falls**, indicating your preference for electronic or printed copy.

### Landowners

Landowners should contact the project's land agent: Dalcour Maclaren, 20 Hollingworth Court, Turkey Mill, Ashford Road, Maidstone, Kent ME14 5PP E: [northfalls@dalcourmaclaren.com](mailto:northfalls@dalcourmaclaren.com) T: 01622 623025

### Fisheries

Fisheries related queries can be directed to our fisheries consultants: Brown & May Marine Ltd, Progress Way, Mid Suffolk Business Park, Eye, Suffolk, IP23 7HU E: [northfalls@brownmay.com](mailto:northfalls@brownmay.com) T: 01379 772871

For more information about North Falls visit the project website: [www.northfallsoffshore.com](http://www.northfallsoffshore.com)



# NORTH FALLS

*Offshore Wind Farm*

## APPENDIX F

### F.17

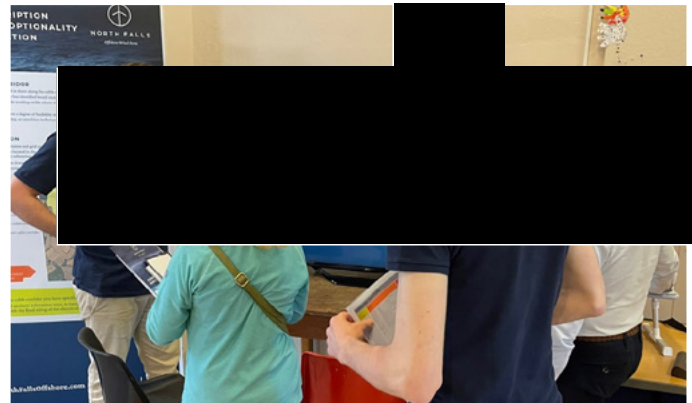
*Community newsletter Edition 3  
Autumn 2023*



Welcome to the third newsletter for North Falls, an offshore wind project now under development

North Falls is a proposed offshore wind farm development on a 95km<sup>2</sup> site in the southern North Sea located 42 kilometres from the UK coast at its nearest point. It is an extension project to the existing 504MW Greater Gabbard Offshore Wind Farm and is owned in an equal joint venture by two major energy companies: SSE Renewables and RWE.

# Statutory consultation round-up



45,595

invitations mailed



147,946

online impressions



5

public events



2

webinars



4,624

visits to the portal



642

written feedback

North Falls completed its statutory consultation phase in July and since then the team has been reviewing responses and determining how elements can be incorporated into the project.

Two key changes to the project are already noticeable in the project description above as we have made the decision to remove our northern array which means the project is now both further from shore – from the former 22 kilometres to 42 kilometres – and smaller in size – down from 150km<sup>2</sup> to 95km<sup>2</sup>. This change will make a significant difference to what will be visible from shore, particularly from the Suffolk coast (see last page for more details).

The consultation comprised five face-to-face events and two webinars with a total of 231 attendees, and a resulting 642 pieces of written feedback from individuals, statutory bodies and community consultees. The feedback covered a wide range of varying issues, from the location of the grid connection and preference for an offshore location, to more specific questions related to individual properties.

This newsletter provides an overview of some of the most widely submitted feedback and a summary of how North Falls has been influenced to take it into account within the proposals that will be submitted as part of the development consent order application. More detail can also be found on the ‘frequently asked questions’ page of the project website, which has been updated following the consultation.







All the information presented during the statutory consultation, including the North Falls Preliminary Environmental Information Report, remains available to review here: [stat.northfallsoffshore.com](http://stat.northfallsoffshore.com), now with a summary of the responses received from the feedback questionnaire.

Next steps will be to carry out targeted consultation and, working closely with neighbouring offshore wind farm Five Estuaries, to engage the local community on certain elements including the combined proposed onshore substation infrastructure. To receive details of this activity, please register your interest via the North Falls website at [www.northfallsoffshore.com](http://www.northfallsoffshore.com).



## Project parameter changes

A number of the project’s parameters have changed following consideration of consultation responses including:

					
<b>377m</b> Maximum turbine height	<b>95 km<sup>2</sup></b> Size of site	<b>Up to 57</b> Wind turbines	<b>2</b> Export cable circuits	<b>42km</b> Closest distance from shore	<b>6 hectares</b> Onshore substation footprint
Down from <b>397m</b>	Down from <b>150km<sup>2</sup></b>	Down from <b>72</b>	Down from <b>4</b>	Up from <b>22km</b>	Down from <b>8 hectares</b>

## Cooperation with Five Estuaries

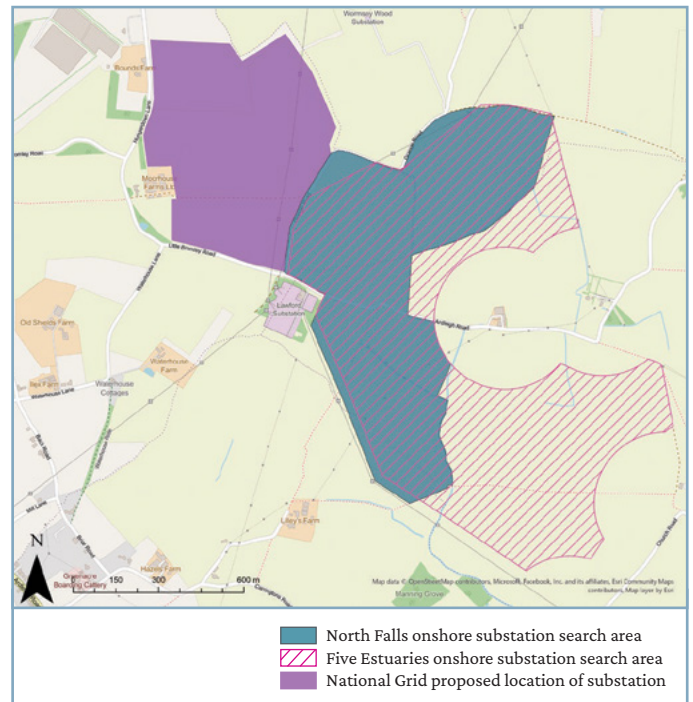
In the event of an onshore grid connection option, there was a marked preference for more cooperation and coordination between North Falls and Five Estuaries in relation to landfall location, onshore corridor route, substation location and stakeholder engagement.

The projects have now signed what is called a ‘good neighbour agreement’ that enables closer liaison, information sharing and joint planning.

The first key decision since this agreement, and having considered consultation feedback from stakeholders, the local community and landowners, is that each project has reduced the maximum number of export cable circuits it will include from four to two. This decision will result in the reduction of impacts both onshore and offshore, particularly during the construction phase.

The combined construction corridor is now proposed to be 90 metres wide rather than the previous width of up to 250 metres. Landowners along the cable corridor will be contacted directly by land agents Dalcour Maclaren, working on behalf of both projects, with a view to discussing what this decision means to them specifically.

North Falls recently decided on the location of its landfall construction compound which means it will be closer to Five Estuaries announced preferred landfall (the northern option presented in its statutory consultation).



Map showing the search areas for the North Falls and Five Estuaries onshore substations along with the proposed location of the National Grid substation.

Five Estuaries has also recently selected its preferred substation search area which now overlaps with North Falls’ substation search area. Together these decisions give greater scope for the projects to work together.

Towards the end of this year, both projects will jointly engage with local communities, particularly those near the onshore substation location, to present how the infrastructure could look in combination and to provide an update on the project proposals.

# Issues and actions from the consultation

A wide range of issues was raised during the statutory consultation that will be addressed either via further consultation and engagement or in the Environmental Statement and Consultation Report.

This is a high level summary of a number of the most commonly raised issues and what actions the project is taking to address them.



## Offshore

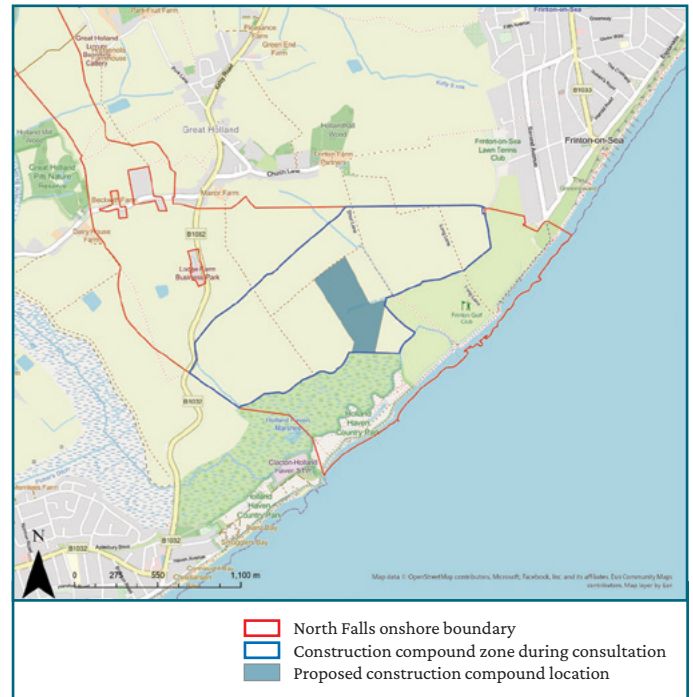
Subject	Issue raised	Actions
Visual impact of the turbines	People were concerned about the visual impact of the wind farm, particularly from the Suffolk coast, and any tourism or seascape impacts.	North Falls has decided to remove the northern array which was the section of the project that was closest to shore and where the turbines would have potentially been most visible. This means the closest turbine to shore will no longer be 22 kilometres but rather 42 kilometres, which will significantly reduce what people onshore will be able to see. Removal of the northern array will also reduce the offshore footprint, alleviating concerns from the shipping sector and reducing the impact on birds.
Size of the turbines	A number of responses felt the maximum turbine sizes included in the proposals were too large and would impact visually.	The maximum height of the turbines has been reduced by 20 metres (from 397m to 377m) and the maximum number of turbines likewise has been reduced by 15 (from 72 to 57). Combined with the removal of the northern array, the reduction in turbine height and number should alleviate most of people’s concerns around visibility.
Offshore grid connection	The majority of consultation responses stated a preference for North Falls to have a grid connection offshore, rather than the proposed onshore grid connection in Ardleigh, primarily due to its link to National Grid’s proposed Norwich-Tilbury reinforcement project.	North Falls continues to play an active role in the Department for Energy Security and Net Zero’s Offshore Transmission Network Review (OTNR) with other key stakeholders involved in the delivery of offshore wind and remains committed to including an offshore grid connection option within the development consent order application we submit to the Planning Inspectorate.
Number of export cable circuits required (offshore)	Consultees with a marine focus questioned the need for four circuits per project for the offshore export cables, as initially proposed by both North Falls and neighbouring Five Estuaries.	Both North Falls and Five Estuaries have carried out additional design and engineering work and concluded that the projects can progress with two circuits each. Offshore, this will mean fewer cables on the seabed, reducing shipping and navigation concerns. It also means both projects can potentially utilise the same landfall location, and reduces the onshore construction impacts considerably due to reduced working widths (more details under Onshore below).

**Landfall**

Subject	Issue raised
<b>Landfall construction compound</b>	A preference was for North Falls’ landfall construction compound to be located away from the Holland Haven marshes and site of special scientific interest (SSSI) and to keep disturbance to Frinton Golf Club and the beach huts to a minimum.

**Actions**

North Falls will place its construction compound to the east of Kirby Brook. It will avoid Holland Haven Marshes and be outside of the SSSI. This location means that the cables will no longer go underneath Frinton beach huts. Horizontal directional drilling will be used under the golf club, with the construction compound placed to the edge of its western end to reduce impacts. The decision from North Falls means the construction compound will now be closer to Five Estuaries announced preferred landfall (the northern option presented in its statutory consultation). This gives greater opportunity for the projects to coordinate landfall works.

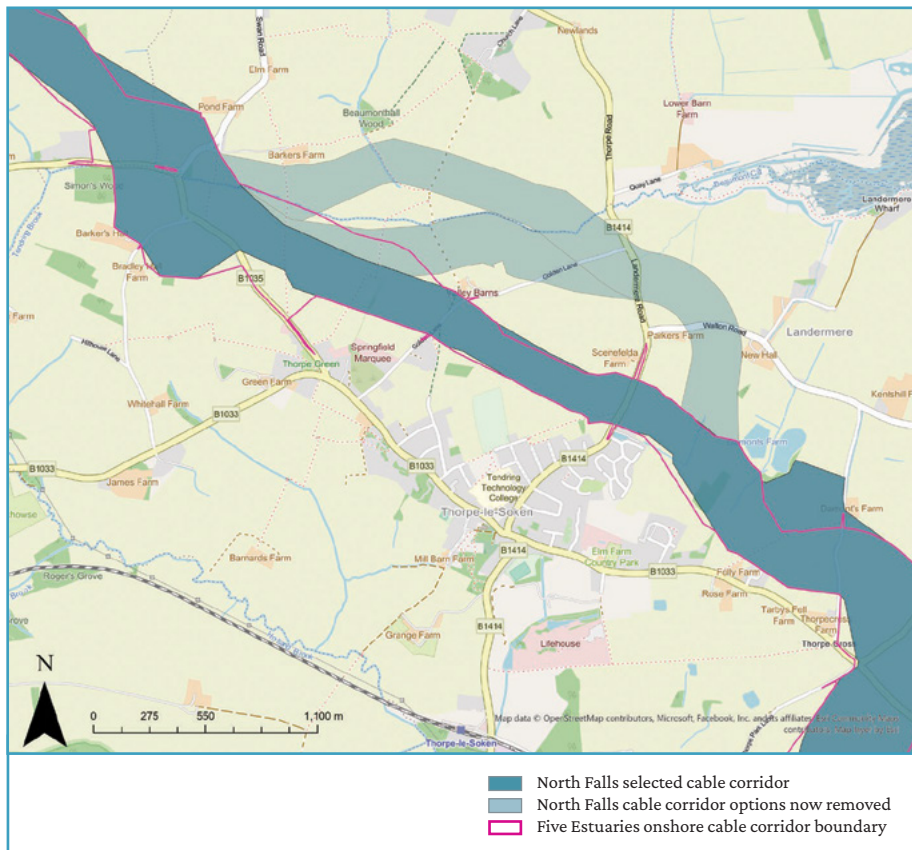


Map of North Falls proposed landfall construction compound location.

**Onshore**

Subject	Issue raised	Actions
<b>Number of export cable circuits required (onshore)</b>	Consultees, including many landowners, questioned the need for four circuits per project for the onshore export cables, as initially proposed by both North Falls and neighbouring Five Estuaries.	As with offshore, the onshore export cable circuits will also be reduced from a maximum of four per project to two per project. This will decrease the overall footprint of the cable corridor, and reduce the impacts on land take and the environment. It will result in reduced widths of the cable corridor during construction and the legal easement post-construction.
<b>Onshore cable corridor width</b>	Consultation responses asked that both North Falls and Five Estuaries reduce the number of export cable circuits and consequently the width of their combined onshore construction cable corridor.	Having reduced the maximum number of export cable circuits from four to two per project, this also means the proposed combined onshore cable corridor will be reduced. It will predominantly be 90 metres rather than the originally proposed up to 250 metres. This allows for soil storage, internal haul roads and possible micro-siting plus flexibility for use of horizontal directional drilling (HDD) under constraints, such as roads. There is ongoing work to identify the final combined construction cable corridor which may lead to further refinements.
<b>Onshore cable corridor alignment with Five Estuaries</b>	As well as requesting a narrower cable corridor, consultation responses also asked or North Falls and Five Estuaries to more fully align their onshore cable route so as to minimise the local impacts.	The cable corridor for both projects is now almost fully aligned along its length, and joint work is ongoing around both the route and the future planning in terms of construction. The projects have signed a ‘good neighbour agreement’ which enables greater cooperation, coordination and transparency as the projects head towards submission of their development consent order applications.

Onshore



Subject

Thorpe-le-Soken cable route options

Issue raised

As part of the consultation North Falls included a northern, central and southern option for the cable corridor near the village of Thorpe-le-Soken and asked the community for their preferred route.

Actions

Having reviewed the consultation feedback, undertaken further engineering design and re-assessed ways to mitigate potential impacts on the community, environment and residential properties, the southern route will now be progressed. This route is closest to Thorpe-le-Soken village and was selected because it is outside the Hamford Water Special Protection Area (SPA), and is more linear therefore will better enable creation of a continuous haul road within the corridor, which will help to reduce construction traffic impacts locally.

Map showing the refined North Falls cable corridor near Thorpe-le-Soken. The top two light shades options have now been removed and the route will follow the darker coloured southern route.

Subject	Issue raised	Actions
Construction traffic	Responses expressed concern about potential increases in traffic due to the construction of the project, particularly bringing attention to narrow local roads, already limited cycling and walking tracks and existing congestion.	North Falls PEIR Chapter 27 Traffic and Transport includes measures to reduce the effects of construction traffic upon local roads. When we submit our application, it will be accompanied by an Outline Construction Traffic Management Plan which will detail these measures such as: how HGV movements will be controlled, monitored and enforced; a ‘Travel Plan’ to manage the number of single occupancy car trips; restriction of HGV movements through Thorpe-le-Soken; use of a temporary haul road along the onshore cable route to reduce the need for vehicles to travel via the public highway, and use of trenchless techniques to cross roads wherever possible to reduce the need for temporary road closures. To ensure safety of cyclists we are also assessing options for a cycle path.
Construction management	A number of responses mentioned disruption during construction as an issue of concern. North Falls was also asked whether it would produce a Code of Construction Practice (equivalent to a Construction Management Plan) to include the measures that contractors will be required to adhere to during construction.	North Falls will now produce an outline version of this document for the project’s development consent order application. The outline will cover a large range of topics including how the effects from dust, noise, light, air quality, water/pollutant management, waste, and so on will be mitigated. It will be publicly available and will include details of how to raise a query regarding non-compliance of any of the contractors during construction.

**Onshore**

Subject	Issue raised	Actions
<b>Private water supplies</b>	Responses from local residents made points with regard to the potential effects of the development of the project upon private water supplies, in particular in the Little Bromley area.	As part of the project’s environmental impact assessment, a hydro-geological risk assessment will be undertaken to identify any private water supplies potentially at risk during the project’s construction. Once they have been identified, mitigation measures will be developed and presented within the North Falls Environmental Statement submitted with the project’s development consent order application.
<b>Onshore ecology</b>	There were general concerns expressed within the consultation responses around impacts of the project on local onshore ecology such as trees, hedgerows, habitats and birds and fauna.	North Falls has committed to at least 10% biodiversity net gain across the onshore area, which will lead to an overall increase in habitats through the project’s lifetime. Following consultation, it has been confirmed that the development of the North Falls biodiversity net gain proposals will tie in with Essex County Council’s Green Infrastructure Strategy. They will be secured through an Ecological Management Plan that is now being prepared.

**Onshore substation**

Subject	Issue raised	Actions
<b>Size of onshore substation</b>	While noting that the majority of respondents stated a preference for the offshore grid connection option, in the event of an onshore grid connection there were numerous queries about the amount of land required for the onshore substation.	North Falls consulted based on a substation footprint of eight hectares. Taking into account the consultation feedback, and also given further engineering design studies, this has now been reduced by two hectares to a total of six.

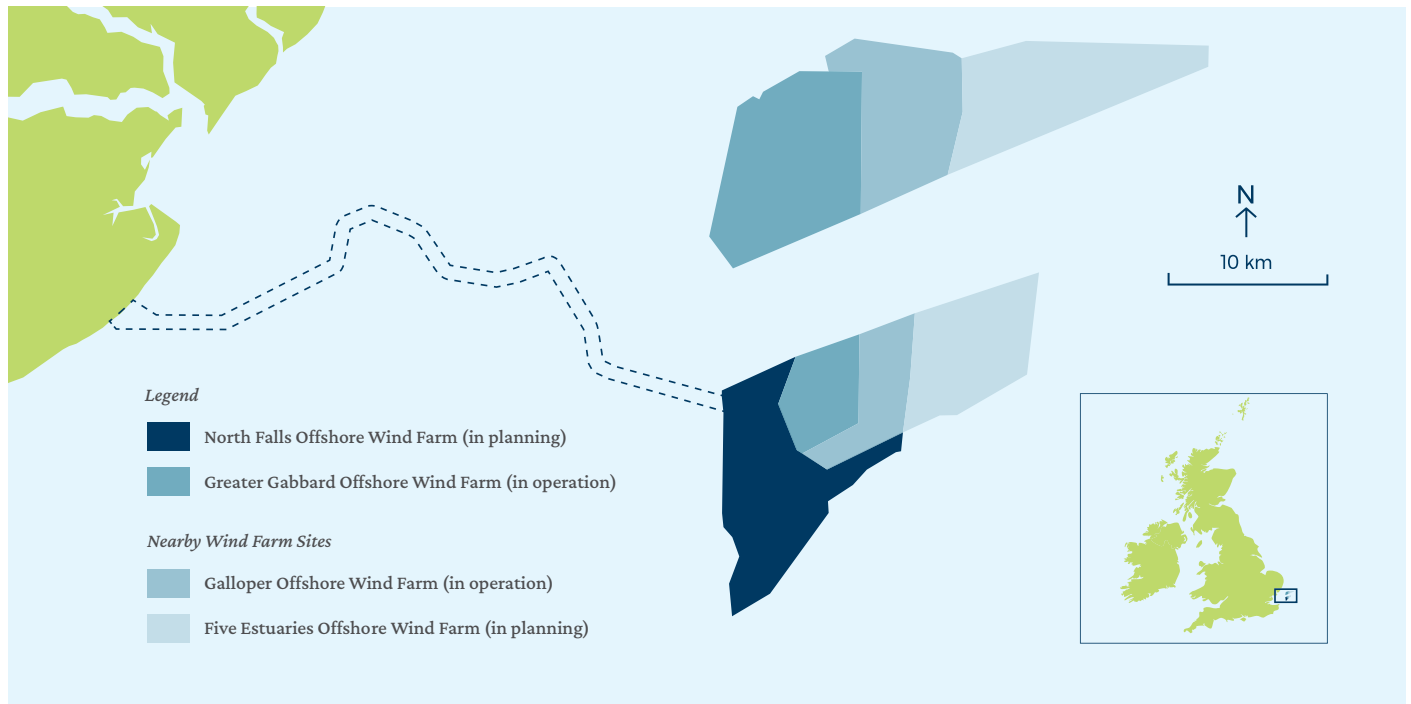
**Project-wide**

Subject	Issue raised	Actions
<b>Community benefits</b>	North Falls received input and questions around how the project could benefit the communities likely to be impacted by construction works or by the longer term infrastructure, for example via potential legacy projects or funds.	The project acknowledges the expectation of the local community around potential benefits and there are ongoing discussions on potential options and ways to ensure they are anchored within the community. Local consultation will be held on this issue once the development consent order is approved, to develop a plan in partnership with those communities directly impacted.
<b>Local health services</b>	There were some concerns around pressure being put onto the local health services because of a potential influx of workers during the project’s construction.	North Falls will undertake a Health Impact Assessment, in line with the advice and best practice published by Public Health England. This assessment will consider the potential increase in demand on all healthcare services in the areas surrounding the proposed development, as well as the effects on other health factors. It will be published as part of the project’s Environmental Statement.

# North Falls removes northern array

Having removed the northern array from its plans, and reduced the height and number of turbines, North Falls will now look quite different from shore, particularly from the Suffolk coast.

The new North Falls project boundary now comprises one section only and will be less visible from shore and take up less seabed. This decision will also reduce impacts on shipping, marine birds and the wider marine environment.



The new North Falls offshore array comprises one section of 95km<sup>2</sup>.

## How will the wind farm look from shore?

To assist people with visualising the changes made, North Falls has updated its 3D interactive visualisation model, removing the additional offshore area, reducing the turbine size to the newly proposed maximum height of 377m and including the new maximum number of turbines which is now 57, as opposed to 72.

To see how the new proposals would look, those interested can access the model and choose from 17 different onshore viewpoint locations: [click here](#)



Scan the QR code with your phone camera to open our visualisation tool.

## Offshore grid connection update

The majority of the 642 responses North Falls received during the statutory consultation either partially or wholly mentioned the preference for the project to have an offshore grid connection.

For this reason, and to ensure the project has the maximum chance to be constructed, North Falls' continues to maintain three options for its grid connection including an offshore option that was presented in the statutory consultation.

Work to assess the feasibility of an offshore option is ongoing as part of the Offshore Transmission Network

Review (OTNR) and potentially via the associated Offshore Coordination Support Scheme (OCSS). The OCSS is run by the Department for Energy Security and Net Zero (DESNZ) and was set up to provide grants to enable the development of coordinated options for offshore transmission infrastructure for late-stage projects within scope of the scheme.

Given this is a continuing process, North Falls remains committed to including an offshore grid connection option within the development consent order application it will submit to the Planning Inspectorate.

## Next steps

Having published and consulted on the North Falls Preliminary Environmental Impact Report, the next steps for the project will be to progress its Environmental Statement and other documents, including the Planning Statement and Consultation Report, in readiness for submitting its application to the Planning Inspectorate.

Following the statutory consultation the project team has reviewed feedback and consequently made a number of fundamental changes to the proposals. To fully implement these proposals North Falls will require additional efforts related to technical and engineering design, consultation and planning, and research.

This work means the date the project intends to submit its development consent order application is under review and is likely to move into 2024. This will give more time to address issues, refine the proposals and prepare an application with the best chance of a positive outcome.

Between now and the submission of the application, North Falls will continue to work on addressing the issues brought up during the statutory consultation and engage with stakeholders, particularly with those potentially impacted by the onshore proposals and specifically near the site of the onshore substation.

To register your interest in hearing direct from North Falls, please send your details via one of the methods outlined below.

### Contact North Falls

To sign up for future newsletters or email updates please email your details to [contact@northfallsoffshore.com](mailto:contact@northfallsoffshore.com); call (24/7) **0800 254 5340** or post to: **Freepost North Falls**, indicating your preference for electronic or printed copy.

### Landowners

Landowners should contact the project's land agent: Dalcour Maclaren, 20 Hollingworth Court, Turkey Mill, Ashford Road, Maidstone, Kent ME14 5PP  
E: [northfalls@dalcourmaclaren.com](mailto:northfalls@dalcourmaclaren.com)  
T: 01622 623025

### Fisheries

Fisheries related queries can be directed to our fisheries consultants: Brown & May Marine Ltd, Progress Way, Mid Suffolk Business Park, Eye, Suffolk, IP23 7HU  
E: [northfalls@brownmay.com](mailto:northfalls@brownmay.com)  
T: 01379 772871

For more information about North Falls visit the project website: [www.northfallsoffshore.com](http://www.northfallsoffshore.com)



# NORTH FALLS

*Offshore Wind Farm*

## APPENDIX F

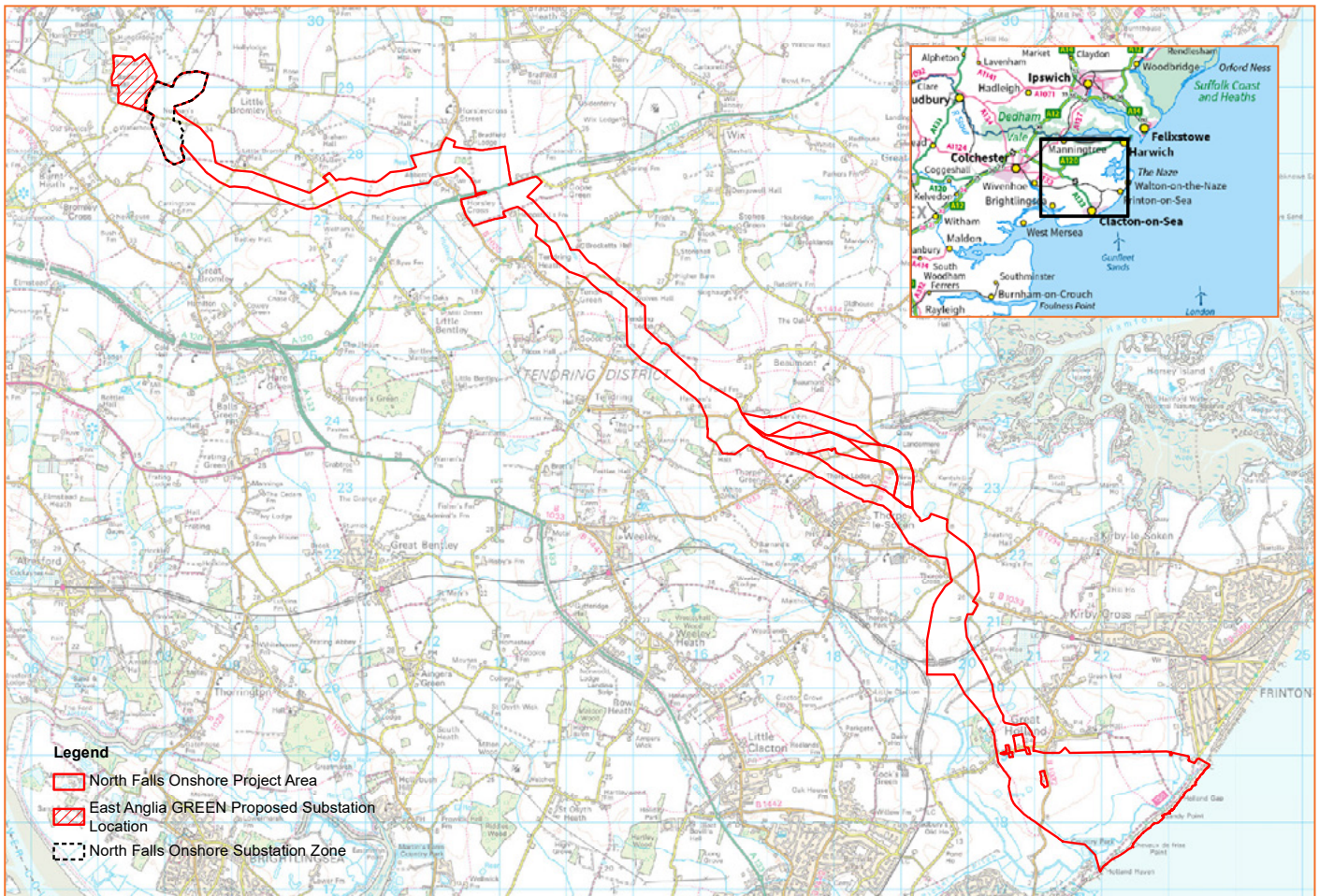
### F.18

*Stage 3 (statutory) consultation landowner  
factsheet and cover letter*





This factsheet has been prepared to answer questions specific to landowners and those with an interest in the land who may be impacted by the project during its development, construction and operation, assuming it proceeds with an onshore grid connection. It includes the key relevant facts and figures about the project and answers the questions asked to date. There are contact details on the back page if further information is required.



## Project description

The route the onshore cables will take from landfall at the coast to the project substation will be approximately 24 kilometres. The cables will be buried to minimise visual and environmental impact. During construction a temporary construction corridor mostly 60 metres in width will be needed. Wider sections may be included when crossing certain features such as railway lines, main roads or large hedgerows. Additional areas for temporary construction compounds and site accesses will also be required. Generally, these temporary areas will be adjacent to the cable corridor.

North Falls will mitigate its impacts as far as practicable, however there will be some temporary disruption during construction. Once the cables have been installed, the land used during construction will be restored to its former agricultural or other use. Where the cable route crosses features such as roads, watercourses and ecologically sensitive areas, the aim will be to cross them using horizontal directional drilling (HDD) to avoid impacts on these features.

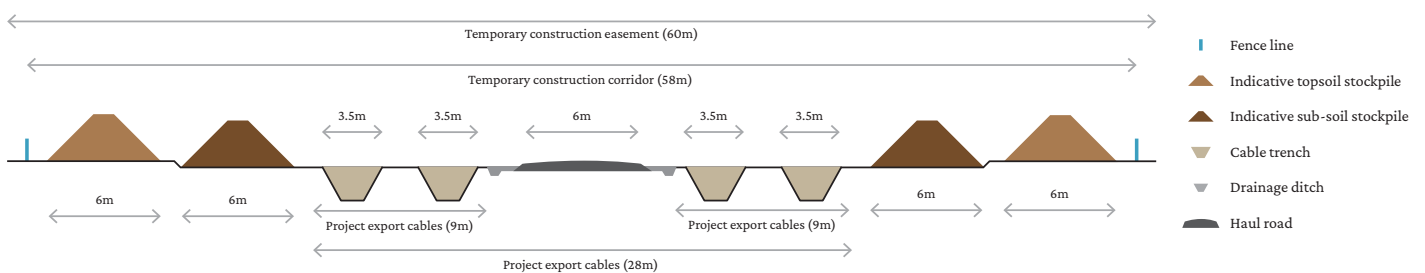
## CABLE CORRIDOR

### Why must the cable corridor be so wide?

Up to four trenches will be required to accommodate up to four circuits, each containing individual cables and fibre optics to enable communications between the wind farm and the control system. During construction, each trench could be up to 3.5m wide at the surface reducing to 1.2m at the bottom. An area is taken on either side of the permanent cable corridor for subsoil and topsoil storage.

The circuits must be spaced out to minimise the mutual heating effect. This spacing enables the cables to effectively carry the large power volumes required without overheating and damaging the cables. The final location and width of each trench will be determined closer to the construction phase.

Diagram showing a cross-section of a cable corridor for four circuits during construction



### How is the route being defined?

The project has undertaken ecology surveys along with engineering assessments and ongoing consultation to help define its route. In addition to this, landowner meetings will be ongoing as well as the section 42 consultation. The feedback received from these meetings and consultation activities also contributes to how the route is refined.

## CONSTRUCTION

### How will the land required be fenced off?

Accommodation works will be agreed, including the location and type of fencing required for the construction period. If needed, crossing points can be put in place where suitable to allow for continued access.

### What methods are available to lay the cables?

Typically, the onshore cables will be installed into ducts that will be laid in a mechanically excavated trench using an open cut method. The ducts are placed in trenches initially and then the cables pulled through after the trenches have been backfilled. A layer of stabilised backfill material is generally used to ensure a consistent structural and thermal environment for the cables.



Backfilling a trench with cable ducts laid (Sofia Offshore Wind Farm)

## CONSTRUCTION

If trenching is not suitable, for example if there are ecological or other features to avoid, an alternative method will be implemented. This may include horizontal directional drilling (HDD), which is a steerable trenchless method of installing underground cables over relatively short distances with minimal or no impact on the surface above.

### How deep will the cables be laid?

The cables will generally be buried at a depth not shallower than 1.2m below ground level depending on ground conditions. Where necessary, for example if there is rock, concrete or another obstacle close to the surface, the cables may need to be laid at a shallower depth of not less than 0.9m. Cable protection and marker tape will be installed above the buried cables.

### How will the cables interact with existing utilities on my land?

Statutory undertakers will be consulted to agree preferred methods of crossing existing utilities on land. Typically, HDD will be used under utilities, but where appropriate clearances (through consultation with other utilities) are available and the minimum depth of 0.9m can be achieved, the cables may be laid over other utilities.

### What will happen to existing hedgerows and trees?

All efforts will be made to minimise the extent of hedgerow disturbance by utilising existing gaps in field boundaries. Additionally, trees which have been identified for retention will be worked around using techniques to safeguard the root protection zone.

Wherever a hedgerow crossing is unavoidable and requires removal, this work will be undertaken prior to topsoil removal. The width of the hedgerow removed will be limited to the minimum required to safely carry out the construction work. All removed hedgerows and trees will be replaced with locally appropriate native species. Plans identifying the extent of the required hedgerow and tree removal will be included within the development consent order application.

### What is a site compound?

A site compound is a secure, fenced, temporary area along the cable route which will help to facilitate construction. The area will be hard standing for suitable storage of materials, vehicles and to site a welfare unit. The areas will be fully reinstated following completion of construction.

*Example of a construction compound for onshore cable installation works (Sofia and Dogger Bank C)*



## CONSTRUCTION

### How will soils be managed to ensure functionality of existing drainage systems?

A Schedule Of Condition will be carried out to accurately record the condition of the land prior to entry. North Falls will also undertake pre- and post-construction soil sampling to assist in bringing the soil back to its previous condition. Sub soil and top soil will be extracted and stored separately to prevent contamination.

Contractors will abide by DEFRA's 2009 Construction Code of Practice for the Sustainable Use of Soils on Construction Sites PB13298 or latest relevant available guidance, ensuring the working area will be reinstated to its pre-existing condition as far as reasonably practical.

Drainage systems will be maintained before, during and post construction by appointing a Drainage Consultant to undertake an assessment of the existing drainage system in place. If alterations are to be made to the existing drainage system, the Drainage Consultant will prepare a design and scheme for the required drainage works on the land affected by the construction works and subsequent restoration.

### Can land be accessed during onshore construction works?

Access to, and use of, retained land temporarily severed by the construction corridor will be maintained through accommodation works including the installation of gateways or water troughs to land which may otherwise be subject to severance. Landowners will be consulted to discuss and agree suitable access requirements and arrangements.

### How long will the onshore construction works last?

The installation of the onshore export cable is a linear construction project with an expected overall construction duration of from 18 to 24 months. As the construction works are comprised of a variety of activities, the duration of each activity at any location being dependent on the nature of the construction activity being undertaken.

## POST-CONSTRUCTION

### What happens once the construction works are complete?

On completion of the main activities, the cable corridor will be reinstated and handed back to the landowner. Such activities will include but not be limited to the removal of haul roads, installation of further drainage if necessary, reinstatement of topsoil and removal of fencing and temporary access arrangements in place. Reinstatement works are weather dependent and will only be carried out where the weather permits.

*Cable route before/during reinstatement and after (Rampion)*



## POST-CONSTRUCTION



*Before*



*During*



*After*

*Before cable construction started, during and after (Triton Knoll)*

### How is the trench reinstated following cable installation?

Once the cable has been laid, the remainder of the trench is backfilled with the excavated material. Hard protective tiles, and marker tape are also installed in the cable trenches to ensure the cable is not damaged by any third party. Once the cables are installed and the trenches backfilled, the stored subsoil and topsoil will be replaced, and the land reinstated to its previous use.

### Will North Falls require any land permanently?

An onshore substation site will be needed with the freehold acquisition required to secure future access and any maintenance. To mitigate the visual impact of the substation on any surrounding land, the substation will be sympathetically designed and screened with appropriate planting and fencing.



*Example of revegetation underway at converter station site (Sofia and Dogger Bank C)*

## PROCESS

### How will the necessary rights be acquired?

North Falls will look to acquire underground cable and surface rights through voluntary agreements which will permit the construction, operation and maintenance of assets through an easement in perpetuity.

The terms and conditions of the rights North falls wishes to acquire will be detailed in Heads of Terms. The Heads of Terms detail the obligations between both parties and note any stipulations which help to draft an option agreement. An option agreement is entered into between the landowner and North Falls for the ability to start construction works during a specified period in return for an option fee. A further payment will be made upon taking entry for construction and a final payment made once the easement has been granted.

Landowners who are directly affected by the cable route through their land in two elements will be compensated. A consideration will be payable for the easement to be granted and compensation will also be paid for any reasonable and substantiated losses and damage arising as a result of construction works. All compensation will be assessed on a case by case basis subject to the production of evidence and proof of loss.

Where a voluntary agreement cannot be reached, compulsory acquisition powers are afforded within the DCO application so that we can acquire any necessary land rights for the project to be developed.

### Will you pay for any professional fees incurred?

Fair and reasonable land agency fees incurred in connection with general consultation, negotiation of the Heads of Terms, the formalisation of the easement documentation and for the negotiation and settlement of any compensation claims will be reimbursed. Likewise, fair and reasonable legal fees incurred to complete legal agreements will also be paid. Professional costs incurred objecting to the project would not be reimbursed.

## CONTACT

For land-related queries, please contact the project's land agent Dalcour Maclaren:

Address: Unit 1 Staplehurst Farm, Western on the Green, Bicester, Oxfordshire OX25 3QU

Email: [northfalls@dalcourmaclaren.com](mailto:northfalls@dalcourmaclaren.com)

Telephone: 01622 623025

To sign up for future newsletters or email updates please email your details to [contact@northfallsoffshore.com](mailto:contact@northfallsoffshore.com); call (24/7) **0800 254 5340** or post to: **Freepost North Falls**, indicating your preference for electronic or printed copy.

For more information about North Falls visit the project website: [www.northfallsoffshore.com](http://www.northfallsoffshore.com)



**NORTH FALLS**

*Offshore Wind Farm*



**DALCOUR  
MACLAREN**

Unit 1 Staplehurst Farm  
Western on the Green  
Bicester  
Oxfordshire  
OX25 3QU

13 June 2023

E: NorthFalls@dalcourmaclaren.com

Our Ref: 208886\_

Dear Sirs

### **North Falls Offshore Wind Farm – Factsheet for Landowners**

As you will hopefully be aware, North Falls began its Statutory Consultation on 16<sup>th</sup> May 2023 which will run until 14<sup>th</sup> July 2023. During this period, North Falls is holding in person public information events and two online webinars to enable those interested in the project to follow its progress, understand the proposals and provide input or feedback to help shape the project design.

There are several ways to submit a response to the North Falls consultation: via a feedback form or the interactive map on the project consultation portal ([www.stat.northfallsoffshore.com](http://www.stat.northfallsoffshore.com)); by email ([contact@northfallsoffshore.com](mailto:contact@northfallsoffshore.com)), or in writing (FREEPOST NORTH FALLS).

In addition to the materials available as part of the consultation, please find enclosed a factsheet which has been prepared to help answer questions specific to landowners and those with an interest in the land potentially impacted by the project during its development, construction, and operation based on the scenario of an onshore grid connection. We hope you find the factsheet helpful and informative.

If you have any questions relating to the project or would like to discuss any points within the factsheet, please do not hesitate to get in touch or you can attend the remaining consultation events the details of which are listed on the North Falls consultation website: <https://stat.northfallsoffshore.com/> We look forward to meeting with you at one of the upcoming consultation events.

Yours faithfully,

Dalcour Maclaren



# NORTH FALLS

*Offshore Wind Farm*

## APPENDIX F

### F.20

*Guide to PEIR for stage 3 (statutory) consultation*





NORTH FALLS

*Offshore Wind Farm*

**GUIDE TO THE  
PRELIMINARY  
ENVIRONMENTAL  
INFORMATION REPORT**

# GUIDE TO THE PRELIMINARY ENVIRONMENTAL INFORMATION REPORT

This document is a quick reference guide to the North Falls Offshore Wind Farm Preliminary Environment Information Report (PEIR).

The purpose of the PEIR is to provide preliminary environmental information in relation to the environmental impact assessment (EIA) to allow stakeholders to develop an informed view of the effects of North Falls, as required by The Infrastructure Planning (Environmental Impact Assessment) Regulations 2017 (the EIA Regulations).

The PEIR is comprised of three volumes, along with a Non-technical Summary, as follows:

- Volumes I - Technical PEIR Chapters.
- Volume II - Chapter Figures.
- Volume III - Chapter Appendices.

The technical chapters provided within Volume I are grouped into introductory chapters, offshore chapters, onshore chapters and finally project-wide chapters.

We would advise reading the Non-technical Summary first as it provides a high level overview and can help to signpost you to the relevant PEIR documents where further information is provided. Details of the documents contained within each volume of the PEIR are provided below.

Preliminary environmental information is also provided in relation to the Habitats Regulations<sup>1</sup> and Marine and Coastal Access Act 2009, within the following associated documents:

- Report to Inform Appropriate Assessment (RIAA).
  - Habitats Regulations Assessment Screening (RIAA Appendix 1)
  - Modelling the abundance of red-throated divers (RIAA Appendix 2)
  - In Principle Compensation Options Review

- Marine Conservation Zone (MCZ) Assessment Preliminary Stage 1 Assessment.
  - Marine Conservation Zone Screening (MCZA Appendix 1)
  - MCZA Sensitivity Ranges (MCZA Appendix 2)
  - Measures of Equivalent Environmental Benefit (MCZA Appendix 3)

Finally, further associated documents are provided alongside the PEIR to provide additional information on North Falls. These are:

- Schedule of Mitigation
- Onshore Substation Design Vision

The PEIR and associated documents can be downloaded from the project website at [www.northfallsoffshore.com](http://www.northfallsoffshore.com) and a hard copy will be available to view at the North Falls public consultation events planned for June 2023. Further information on the public consultation events will be provided on the project website.

**If you have any questions or feedback, please get in touch via:**

**Email:** [contact@northfallsoffshore.com](mailto:contact@northfallsoffshore.com)

**Website form:** [www.northfallsoffshore.com/contact/](http://www.northfallsoffshore.com/contact/)

**Address:** FREEPOST North Falls

North Falls Offshore Wind Farm Limited

**Company number:** 12435947

**Registered address:** Windmill Hill Business Park, Whitehill Way, Swindon, Wiltshire SN5 6PB

**The PEIR consultation closes on Friday 14 July 2023.**

# NON-TECHNICAL SUMMARY

This is a concise, stand-alone report that presents a high-level overview of the PEIR in an easy-to-read format. It is recommended that this is read first as it is a way to gain an initial understanding of the project proposals. Further details can then be found in the relevant PEIR documents.

# PRELIMINARY ENVIRONMENTAL INFORMATION REPORT

## INTRODUCTORY CHAPTERS

VOLUME I PEIR TECHNICAL CHAPTERS	VOLUME II FIGURES		VOLUME III APPENDICES
<b>1 Introduction</b>	Figure 1.1 Figure 1.2	Offshore project area Onshore project area	N/A
<b>2 Need for Project</b>	N/A		N/A
<b>3 Policy and Legislative Context</b>	N/A		N/A
<b>4 Site Selection and Assessment of Alternatives</b>	Figure 4.1 Figure 4.2 Figure 4.3 Figure 4.4 Figure 4.5 Figure 4.6 Figure 4.7 Figure 4.8 Figure 4.9 Figure 4.10 Figure 4.11 Figure 4.12 Figure 4.13 Figure 4.14 Figure 4.15	Array area site selection Potential development area Cable landfall site selection Offshore cable corridor selection – preliminary area of search Offshore cable corridor area of search with hard constraints removed Offshore cable corridor preliminary options Offshore cable corridor refinement Onshore substation site selection – area of search Onshore substation site selection – long list options Onshore substation site selection – onshore substation zone (preferred option) Onshore cable corridor site selection – combined cable corridors Onshore cable corridor site selection – refined combined cable corridors Onshore cable corridor site selection – preferred combined cable corridor Onshore cable corridor site selection – cable route north of the A120 Onshore cable corridor site selection – preferred onshore cable corridors	<i>Appendix 4.1 North Falls Site Selection Golden Rules</i>
<b>5 Project Description</b>	N/A		<i>Appendix 5.1 Crossing Schedule</i>
<b>6 EIA Methodology</b>	N/A		<i>Appendix 6.1 Grid Connection Optionality – Worst Case Assessment</i>
<b>7 Technical Consultation</b>	N/A		N/A

<sup>1</sup> The Conservation of Habitats and Species Regulations 2017, the Conservation of Offshore Marine Habitats and Species Regulations 2017 and the Conservation of Habitats and Species (Amendment) (EU Exit) Regulations 2019 are collectively referred to as the 'Habitat Regulations'

# OFFSHORE CHAPTERS

VOLUME I PEIR TECHNICAL CHAPTERS	VOLUME II FIGURES	VOLUME III APPENDICES	
<b>8 Marine Geology Oceanography and Physical Processes</b>	Figure 8.1	Bathymetry and Bedforms of the North Falls Array Areas	N/A
	Figure 8.2	Bathymetry and Bedforms of the Offshore Cable Corridor	
	Figure 8.3	Sediment sample locations at North Falls	
	Figure 8.4	Position on the amphidromic point	
	Figure 8.5	Depth Below the Seabed to the Top of the Harwich Formation along the Offshore Cable Corridor	
	Figure 8.6	Depth Below the Seabed to the Top of the London Clay along the Offshore Cable Corridor	
	Figure 8.7	Depth Below the Seabed to the Base of the Pleistocene Unit along the Offshore Cable Corridor	
	Figure 8.8	Depth Below the Seabed to the 'Base Shore Unit' Interpreted close to the Landfall.	
	Figure 8.9	Seabed sediment Interpretation of the Array Areas and Interconnector Cable Corridor	
	Figure 8.10	Seabed Sediment Interpretation of the Offshore Cable Corridor	
	Figure 8.11	Morphology of the Seabed across the Array Areas	
	Figure 8.12	Morphology of the Seabed across the Offshore Cable Corridor	
	Figure 8.13	Zone of potential influence	
	Figure 8.14	Receptor groups for marine geology, oceanography and physical processes	
	Figure 8.15	Average Suspended Particulate Matter (SPM) 1998 - 2015	
	Figure 8.16	Modelled tidal flow in the southern North Sea for Greater Gabbard offshore wind farm during an ebb tide.	
	Figure 8.17	Modelled tidal flows in the southern North Sea for Greater Gabbard offshore wind farm during a flood	
	Figure 8.18	Regional sediment transport pathways in the vicinity of North Falls	
<b>9 Marine Water and Sediment Quality</b>	Figure 9.1	Sediment sample locations for contaminated analysis	N/A
	Figure 9.2	WFD water bodies and protected areas	
<b>10 Benthic and Intertidal Ecology</b>	Figure 10.1	Sediment Sample Locations at North Falls	<i>Appendix 10.1 Benthic Ecology; North Falls Offshore Site Investigation (Fugro, 2021)</i>
	Figure 10.2	Zones of Potential Influence	
	Figure 10.3	Receptor Groups for Marine Geology, Oceanography and Physical Processes	
	Figure 10.4	Habitat Distribution in North Falls and Galloper Survey Areas	

# OFFSHORE CHAPTERS

VOLUME I PEIR TECHNICAL CHAPTERS	VOLUME II FIGURES	VOLUME III APPENDICES	
<b>11 Fish and Shellfish Ecology</b>	Figure 11.1	Study area	<i>Appendix 11.1 Fish and Shellfish Ecology Technical Report</i>
	Figure 11.2	Herring Spawning and nursery grounds (Source: Coull et al 1998, Ellis et al 2012)	
	Figure 11.3	Herring habitat suitability for Spawning based on sediment PSA	
	Figure 11.4	Sandeel spawning and nursery grounds (Source: Coull et al 1998, Ellis et al 2012)	
	Figure 11.5	IBRS Lesser sandeel CPUE (2917-2021) (Source: DATRAS 2022)	
	Figure 11.6	ICES sandeel assessment areas in the North Sea (1-4) and the sandeel habitat areas and location of fishing grounds describes by Jensen et al (2011)	
	Figure 11.7	Sandeel habitat suitability based on sediment PSA	
	Figure 11.8	VI Tope and Thornback Ray Nursery Grounds (Source Ellis et al 2010)	
	Figure 11.9	Sole spawning and nursery grounds and noise impact contours (186 dB)	
	Figure 11.10	Plaice spawning and nursery grounds and noise impact contours (186 dB)	
	Figure 11.11	Lemon sole spawning and nursery grounds and noise impact contours (186 dB)	
	Figure 11.12	Mackerel spawning and nursery grounds and noise impact contours (186 dB)	
	Figure 11.13	Sandeel spawning and nursery grounds and noise impact contours (186 dB)	
	Figure 11.14	Cod spawning and nursery grounds and noise impact contours (186 dB)	
	Figure 11.15	Whiting spawning and nursery grounds and noise impact contours (186 dB)	
	Figure 11.16	Sprat spawning and nursery grounds and noise impact contours (186 dB)	
	Figure 11.17	Herring spawning and nursery grounds and noise impact ranges (186 dB) (Downs herring closest piling location)	
	Figure 11.18	Herring spawning and nursery ground and noise impact ranges (186 dB) (Blackwater herring closest piling location)	
	Figure 11.19	Tope and thornback ray nursery grounds and noise impact contours (186 dB)	

# OFFSHORE CHAPTERS

VOLUME I PEIR TECHNICAL CHAPTERS	VOLUME II FIGURES	VOLUME III APPENDICES	
<b>12 Marine Mammals</b>	Figure 12.1	Grey seal at sea mean densities and haul-out sites	<i>Appendix 12.1 Marine Mammal Baseline</i> <i>Appendix 12.2 Underwater Noise Modelling Report</i> <i>Appendix 12.3 Underwater Noise Technical Assessment</i> <i>Appendix 12.4 Unexploded Ordnance Clearance Information and Assessment</i> <i>Appendix 12.5 Marine Mammal Cumulative Assessment Screening</i>
	Figure 12.2	Harbour seal at sea mean densities and haul-out sites	
	Figure 12.3	PTS ranges for monopiles for all marine mammal species	
	Figure 12.4	PTS ranges for jacket pin piles, for all marine mammal species	
	Figure 12.5	TTS ranges for monopiles, for all marine mammal species	
	Figure 12.6	TTS ranges for jacket pin piles, for all marine mammal species	
	Figure 12.7	5dB underwater noise contours for monopiles with harbour porpoise densities	
	Figure 12.8	5dB underwater noise contours for jacket pin piles with harbour porpoise densities	
	Figure 12.9	5dB underwater noise contours for monopiles with minke whale densities	
	Figure 12.10	5dB underwater noise contours for jacket pin piles with minke whale densities	
	Figure 12.11	5dB underwater noise contours for monopiles with grey seal densities	
	Figure 12.12	5dB underwater noise contours for jacket pin piles with grey seal densities	
	Figure 12.13	5dB underwater noise contours for monopiles with harbour seal densities	
	Figure 12.14	5dB underwater noise contours for jacket pin piles with harbour seal densities	
<b>13 Offshore Ornithology</b>	Figure 13.1	Offshore ornithology study area	<i>Appendix 13.1 Consultant Responses</i> <i>Appendix 13.2 Offshore Ornithology Technical Report</i> <i>Appendix 13.3 Supplementary information for the offshore ornithology cumulative and in combination assessment</i>
	Figure 13.2	Offshore wind farms in the study area	

# OFFSHORE CHAPTERS

VOLUME I PEIR TECHNICAL CHAPTERS	VOLUME II FIGURES	VOLUME III APPENDICES	
<b>14 Commercial Fisheries</b>	Figure 14.1	Commercial Fisheries Study Area	<i>Appendix 14.1 Commercial Fisheries Technical Report</i>
	Figure 14.2	Surveillance Sightings by Nationality (2011 - 2020) (Source: MMO 2021)	
	Figure 14.3	Surveillance Sightings by Method (2011 - 2020) (Source: MMO, 2021)	
	Figure 14.4	Historic Fishing Rights	
	Figure 14.5	UK Landings (£) by Method (Average 2016 - 2020) (Source: MMO, 2021)	
	Figure 14.6	UK Landings (£) by Species (Average 2016 - 2020) (Source: MMO, 2021)	
	Figure 14.7	KEIFCA Surveillance Sightings (2015-2020) (Source: KEIFCA, 2022)	
	Figure 14.8	Anonymised Potting Grounds from Consultation (Source: Appendix 14.1)	
	Figure 14.9	Anonymised Netting (Drift Nets, Set Nets, Gillnets, Trammel Nets) Grounds from Consultation (Source: Appendix 14.1)	
	Figure 14.10	Anonymised Trawling Grounds from Consultation (Source: Appendix 14.1)	
	Figure 14.11	Anonymised Longlining Grounds from Consultation (Source: Appendix 14.1)	
	Figure 14.12	HHFA Fishing Grounds from Consultation (Source: BMM, 2022)	
	Figure 14.13	UK Landings (£) by Vessel Length (Average 2016 - 2020) (Source: MMO, 2021)	
	Figure 14.14	UK VMS (£) Beam Trawls (Average 2016 - 2020) (Source, MMO, 2021)	
	Figure 14.15	UK VMS (£) Bottom Otter Trawls (Average 2016 - 2020) (Source: MMO, 2021)	
	Figure 14.16	UK VMS (£) Pots and Traps (Average 2016 - 2020) (Source: MMO, 2021)	
	Figure 14.17	Belgian Surveillance Sightings (2011 - 2020) (Source: MMO, 2021)	
	Figure 14.18	Belgian Landings (tonnes) by Method (Average 2012 - 2016) (Source: STECF, 2017)	
	Figure 14.19	Belgian Landings (tonnes) by Species (Average 2012 - 2016) (Source: STECF, 2017)	
	Figure 14.20	Belgian VMS (€) Beam Trawls (Average 2010 - 2014) (Source: ILVO, 2015)	
	Figure 14.21	Belgian VMS (€) Demersal Trawls (Average 2010 - 2014) (Source: ILVO, 2015)	
	Figure 14.22	Belgian VMS (€) Seine Nets (Average 2010 - 2014) (Source: ILVO, 2015)	
	Figure 14.23	Dutch Surveillance Sightings (2011 - 2020) (Source: MMO, 2021)	
	Figure 14.24	Dutch Landings (€) by Method (Average 2017 - 2021) (WUR, 2022)	
	Figure 14.25	Dutch Landings (€) by Species (Average 2017 - 2021) (Source: WUR, 2022)	
	Figure 14.26	Dutch VMS (€) Beam Trawls Vessels Over 12m (Average 2017 - 2021) (Source: WUR, 2022)	
	Figure 14.27	Dutch VMS (€) Seine Nets Vessels Over 12m (Average 2017 - 2021) (Source: WUR, 2022)	
	Figure 14.28	French Surveillance Sightings by Method (2011 -2020) (Source: MMO, 2021)	

# OFFSHORE CHAPTERS

VOLUME I PEIR TECHNICAL CHAPTERS	VOLUME II FIGURES	VOLUME III APPENDICES
<b>14 Commercial Fisheries (Continued)</b>	Figure 14.29	French Landings (tonnes) by Method (Annual Average 2012 - 2016) (Source: STECF, 2017)
	Figure 14.30	French Landings (tonnes) by Species (Annual Average 2012 - 2016) (Source: STECF, 2017)
	Figure 14.31	AIS Tracks of a 22m Potting Vessel Fishing within Hornsea One
	Figure 14.32	AIS Tracks of a 30m Beam Trawler Fishing within Walney Extension
	Figure 14.33	AIS Tracks of a 20m Trawler Undertaking an Overtrawl Survey within Beatrice
	Figure 14.34	AIS Tracks of a 33m Scallop Dredger Fishing within Moray East and Beatrice
	Figure 14.35	Marine Protected Areas – Cumulative Effects
	Figure 14.36	Aggregate Site Agreements – Cumulative Effects
	Figure 14.37	Existing or Planned Windfarms – Cumulative Effects
	Figure 14.38	All Cumulative Effect Considerations
	Figure 14.39	Developments Screened into the Cumulative Effects Assessment for Commercial Fisheries
	Figure 14.40	Offshore Wind Farm Projects of Relevance to Commercial Fisheries
	Figure 14.41	MPAs with Bottom Towed Gear Prohibition Byelaws of Relevance to Commercial Fisheries
	Figure 14.42	Aggregate Extraction Sites of Relevance to Commercial Fisheries
	Figure 14.43	Interconnector Cables of Relevance to Commercial Fisheries
	Figure 14.44	UK VMS Value (£) Demersal Trawls / Seine Nets (average 2016-2020) and Cumulative Projects
	Figure 14.45	Belgian VMS by Value (€) Beam Trawls (average 2010-2014) and Cumulative Projects
	Figure 14.46	Belgian VMS by Value (€) Demersal Trawls (average 2010-2014) and Cumulative Projects
	Figure 14.47	Dutch VMS by Value (€) Beam Trawls (average 2017-2021) and Cumulative Projects
	Figure 14.48	Dutch VMS by Value (€) Seine Nets (average 2017-2021) and Cumulative Projects
Figure 14.49	French Surveillance Sightings (2011-2020) and Cumulative Projects	

# OFFSHORE CHAPTERS

VOLUME I PEIR TECHNICAL CHAPTERS	VOLUME II FIGURES	VOLUME III APPENDICES
<b>15 Shipping and Navigation</b>	Figure 15.1	Overview of the study area
	Figure 15.2	Navigational features
	Figure 15.3	Vessel traffic survey data by type.
<b>16 Offshore Archaeology and Cultural Heritage</b>	Figure 16.1	Records of offshore heritage assets
	Figure 16.2	Records of intertidal heritage assets
	Figure 16.3	Historic seascape character and constructed/proposed developments
	Figure 16.4	Historic seascape character – previous sub types
	Figure 16.5	Paleogeographic features
<b>17 Aviation and Radar</b>	Figure 17.1	Airports and Radars within the Aviation Study Area
	Figure 17.2	Airspace within the Aviation Study Area
<b>18 Infrastructure and Other Users</b>	Figure 18.1	Offshore Wind Farms
	Figure 18.2	Offshore Activities
		<i>Appendix 15.1</i> <i>Baseline Navigational Risk Assessment (NRA)</i>
		<i>Appendix 16.1</i> <i>North Falls Offshore Wind Farm and Offshore Cable Corridor Archaeological Assessment of Geophysical Data</i>
		<i>Appendix 17.1</i> <i>Airspace Analysis and Radar Modelling</i> <i>Appendix 17.2</i> <i>Southend Airport Instrument Flight Procedure Assessment</i>
		N/A

# ONSHORE CHAPTERS

VOLUME I PEIR TECHNICAL CHAPTERS	VOLUME II FIGURES	VOLUME III APPENDICES	
<b>19 Onshore Ground Conditions and Contamination</b>	Figure 19.1	Onshore Project Area	<i>Appendix 19.1 Volume III Geo-Environmental Desk study and Preliminary Risk Assessment Report</i>
	Figure 19.2	Identified Waste Facilities	
	Figure 19.3	Environmentally Sensitive Areas and Cultural Designations	
	Figure 19.4	Geological Environmentally Sensitive Areas	
	Figure 19.5	Potentially Contaminative Historical Land Uses	
	Figure 19.6	Identified Source Protection Zones	
<b>20 Air Quality</b>	Figure 20.1	Air Quality Study Area	<i>Appendix 20.1 Construction Dust and Particulate Matter Assessment Methodology</i>  <i>Appendix 20.2 Air Quality Assessment Traffic Data</i>  <i>Appendix 20.3 Ecological Receptor Assessment Table</i>
	Figure 20.2	Air Quality Construction Dust and Fine Particulate Matter Buffers	
	Figure 20.3	Air Quality Construction Phase Road Traffic Emissions – Human Receptor Locations	
	Figure 20.4	Air Quality Construction Phase Road Traffic Emissions – Ecological Receptor Locations	
<b>21 Water Resources and Flood Risk</b>	Figure 21.1	Surface Water Catchments	<i>Appendix 21.1 Geomorphology Baseline Survey</i>  <i>Appendix 21.2 Water Framework Directive Compliance Assessment</i>  <i>Appendix 21.3 Flood Risk Assessment</i>
	Figure 21.2	Groundwater Features	
	Figure 21.2	Flood Risk	
<b>22 Land Use and Agriculture</b>	Figure 22.1	Land Use and Agriculture Study Area	N/A
	Figure 22.2	Land Use Cover Map	
	Figure 22.3	Agri-Environment Schemes	
	Figure 22.4	Agricultural Land Classifications (ALC)	
	Figure 22.5	Soil Types	
	Figure 22.6	Utilities	

# ONSHORE CHAPTERS

VOLUME I PEIR TECHNICAL CHAPTERS	VOLUME II FIGURES	VOLUME III APPENDICES	
<b>23 Onshore Ecology</b>	Figure 23.1	Designates sites for Nature Conservation	<i>Appendix 23.1 Extended Phase 1 Habitat Survey Report</i>  <i>Appendix 23.2 Great Crested Newt eDNA Survey Report</i>  <i>Appendix 23.3 Riparian Mammals (Water Vole and Otters) Survey Report</i>  <i>Appendix 23.4 Reptile Survey Report</i>  <i>Appendix 23.5 Hazel Dormice</i>  <i>Appendix 23.6 Terrestrial and Aquatic Invertebrate Survey Report</i>  <i>Appendix 23.7 National Vegetation Classification Survey Report</i>
	Figure 23.2	Habitats of Principal Importance	
	Figure 23.3	Extended Phase 1 Habitat Survey	
	Figure 23.4	Badger Sett Locations [confidential]*	
	Figure 23.5	Features suitable for supporting roosting and commuting/foraging bats	
	Figure 23.6	Watercourses suitable for supporting large populations of reptile	
	Figure 23.7	Great crested newt survey results	
	Figure 23.8	Features suitable for supporting large populations of reptiles	
	Figure 23.9	Features suitable for supporting hazel dormice	
<b>24 Onshore Ornithology</b>	Figure 24.1	Onshore Ornithology Study Area: Landfall	<i>Appendix 24.1 Onshore Landfall Area: 2020/21 Non-breeding Bird Surveys Report</i>  <i>Appendix 24.2 Onshore Landfall Area: 2021 Breeding Bird Surveys Report</i>  <i>Appendix 24.3 Onshore Landfall Area: 2021/22 Non-breeding Bird Surveys Report</i>  <i>Appendix 24.4 Onshore Cable Corridor(s): Non-breeding Bird Surveys 2021/22 Report</i>  <i>Appendix 24.5 Onshore Cable Corridor(s): 2022 Breeding Bird Survey Report</i>
	Figure 24.2	Onshore Ornithology Study Area: Onshore Cable Corridor(s)	
	Figure 24.3	Landfall Search Area: Breeding Bird Survey Results 2021	
	Figure 24.4	Landfall Search Area: Breeding Bird Survey Results 2022	
	Figure 24.5	Landfall Search Area: Brent Geese and White-fronted Geese	
	Figure 24.6	Landfall Search Area: Other Goose Species	
	Figure 24.7	Landfall Search Area: Duck Species	
	Figure 24.8	Onshore Cable Corridor(s): Geese	
	Figure 24.9	Onshore Cable Corridor(s): Wader IOFs	
	Figure 24.10	Onshore Cable Corridor(s): Other Wader Species	
	Figure 24.11	Onshore Cable Corridor(s): Duck Species	
	Figure 24.12	Onshore Cable Corridor(s): Raptor and Owl Species	
	Figure 24.13	Onshore Cable Corridor(s): Corn Bunting and Grey Partridge.	
	Figure 24.14	Breeding Barn Owl Locations [confidential]*	

# ONSHORE CHAPTERS

VOLUME I PEIR TECHNICAL CHAPTERS	VOLUME II FIGURES	VOLUME III APPENDICES
25 <i>Onshore Archaeology and Cultural Heritage</i>	Figure 25.1 Location of designated heritage assets within the study area Figure 25.2 Location of non-designated heritage assets within the study area	<i>Appendix 25.1 Cable Landfall search area. Historic environment desk-based (baseline) assessment (DBA)</i> <i>Appendix 25.2 Onshore Cable corridors and onshore substation zone. Historic Environment DBA</i> <i>Appendix 25.3 Initial Assessment of the Impact of Onshore Infrastructure in the Setting of Heritage Assets</i> <i>Appendix 25.4 Initial Assessment of the Impact of Offshore Infrastructure in the Setting of Coastal Heritage Assets</i> <i>Appendix 25.5 Heritage walkover survey</i> <i>Appendix 25.6 Geoarchaeological Desk-based Assessment (DBA)</i> <i>Appendix 25.7 Onshore Historic Environment Gazetteers</i> <i>Appendix 25.8 Archaeology Geophysics Report</i>
26 <i>Noise and Vibration</i>	Figure 26.1 Substation Noise and Vibration Sensitive Receptors and Monitoring Locations	<i>Appendix 26.1 Baseline Noise Survey</i>
	Figure 26.2 Landfall Noise and Vibration Sensitive Receptors and Monitoring Locations	<i>Appendix 26.2 Road Traffic Noise Assessment</i>
	Figure 26.3 Construction Road Traffic Noise and Vibration Sensitive Receptors	<i>Appendix 26.3 Construction Noise Assessment</i>
	Figure 26.4 (a-i) NVSR with the Potential to Experience Significant Effects due to Noise of Site Preparation Works along the Cable Corridor, Without Screening	
	Figure 26.5 (a-i) NVSR with the Potential to Experience Significant Effects due to the Noise of Trench Excavations, Duct Installation and Trench Backfill Works along the Cable Corridor, Without Screening	
	Figure 26.6 (a-i) NVSR with the Potential to Experience Significant Effects due to Noise of Site Preparation Works along the Cable Corridor, With Screening	
	Figure 26.7 (a-i) NVSR with the Potential to Experience Significant Effects due to the Noise of Trench Excavations, Duct Installation and Trench Backfill Works along the Cable Corridor, With Screening	
27 <i>Traffic and Transport</i>	Figure 27.1 Traffic and Transport Study Area	<i>Appendix 27.1 Transport Assessment</i>
	Figure 27.2 Proposed Access and Crossings	
	Figure 27.3 Sensitive Receptors – Highway Safety	<i>Appendix 27.2 Interrelationships between impacts</i>
	Figure 27.4 Proposed Onshore Cable Route Crossing Locations	
	Figure 27.5 Link Based Sensitive Receptors	

# PROJECT-WIDE CHAPTERS

VOLUME I PEIR TECHNICAL CHAPTERS	VOLUME II FIGURES	VOLUME III APPENDICES
28 <i>Human Health</i>	Figure 28.1 Human Health Study Area – Geographic Area Classifications	<i>Appendix 28.1 Human Health Statistics</i>
	Figure 28.2 Human Health Study Area – IMD 2019 for Project LSOAs	
29 <i>Seascape, Landscape and Visual (SLVIA)</i>	Figure 29.1.1 Seascape, Landscape and Visual Impact Assessment Study Area	<i>Appendix 29.1 Seascape and Landscape Visual Impact Assessment and Visualisation Methodology</i>
	Figure 29.1.2a Blade Tip Height Zone of Theoretical Visibility and Viewpoint Locations (A3)	
	Figure 29.1.2b Blade Tip Height Zone of Theoretical Visibility and Viewpoint Locations (A1)	
	Figure 29.1.3a Hub Height Zone of Theoretical Visibility and Viewpoint Locations (A3)	
	Figure 29.1.3b Hub Height Zone of Theoretical Visibility and Viewpoint Locations (A1)	
	Figure 29.1.4a Seascape and Landscape (National) Character Types	
	Figure 29.1.4b Volume II Seascape and Landscape (National) Character Types with Blade Tip Height Zone of Theoretical Visibility	
	Figure 29.1.5a Landscape Character Types (District and County)	
	Figure 29.1.5b Landscape Character Types (District and County) with Blade Tip Height Zone of Theoretical Visibility	
	Figure 29.1.6a Designated Landscapes	
	Figure 29.1.6b Designated Landscapes with Blade Tip Height Zone of Theoretical Visibility	
	Figure 29.1.7 Volume II Visibility Range	
	Figure 29.1.8 Operational, Consented, Proposed and Scoping Onshore Wind Farms within 60km	
	Figure 29.1.9a Comparative ZTV (Operational Offshore Schemes vs North Falls)	
	Figure 29.1.9b Comparative Cumulative ZTV (Operational, Consented and proposed vs North Falls)	
	Viewpoint visualisations	
	Figure 29.2.1 Viewpoint 1 - Covehithe	
Figure 29.2.2 Viewpoint 2 - Southwold Pier		
Figure 29.2.3 Viewpoint 3 - Dunwich Coastguard Cottages		
Figure 29.2.4 Viewpoint 4 - Sizewell Beach		
Figure 29.2.5 Viewpoint 5 - Cliffs above Thorpeness		
Figure 29.2.6 Viewpoint 6 - Aldeburgh		
Figure 29.2.7 Viewpoint 7 - Orford Castle		
Figure 29.2.8 Viewpoint 8 - Orford Ness		
Figure 29.2.9 Viewpoint 9 - Shingle Street		
Figure 29.2.10 Viewpoint 10 - Pulhamite Cliffs (Bawdsey Manor)		
Figure 29.2.11 Viewpoint 11 - Felixstowe Seafront Gardens		
Figure 29.2.12 Viewpoint 12 - Landguard Fort		
Figure 29.2.13 Viewpoint 13 - Naze Tower		
Figure 29.2.14 Viewpoint 14 - Frinton on Sea		
Figure 29.2.15 Viewpoint 15 - Clacton on Sea		
Figure 29.2.16 Viewpoint 16 - North Foreland		
Figure 29.2.17 Viewpoint 17 - Coastal Path between Thorpeness and Sizewell (Wireline View)		

# PROJECT-WIDE CHAPTERS

VOLUME I PEIR TECHNICAL CHAPTERS	VOLUME II FIGURES	VOLUME III APPENDICES
<b>30 Landscape and Visual (LVIA)</b>	Chapter 30: LVIA Figures:	N/A
	Figure 30.1.1a Landscape and Visual Impact Assessment Study Area (substation zone)	
	Figure 30.1.1b Landscape and Visual Impact Assessment Study Area (cable corridors)	
	Figure 30.1.2 Substation Zone of Theoretical Visibility (18m in height) and Viewpoint Locations	
	Figure 30.1.3 Landscape Character Types	
	Figure 30.1.4 Designated Landscapes	
	Figure 30.1.5 Proposed Substations within 2km	
	Chapter 30: LVIA Viewpoint visualisations	
	Figure 30.2.1 Viewpoint 1 - Court Farm, Stutton Road	
	Figure 30.2.2 Viewpoint 2 - Bridleway at Barn Lane	
	Figure 30.2.3 Viewpoint 3 - Norman's Farm	
	Figure 30.2.4 Viewpoint 4 - Little Bromley (road to west)	
	Figure 30.2.5 PRoW near Lilley's Farm	
	Figure 30.2.6 Grange Road (and PRoW to north)	
Figure 30.2.7 PRoW near Little Bromley Hall		
<b>31 Socio-Economics</b>	Figure 31.1 UK and local study area	<i>Appendix 31.1 North Falls Offshore Wind Farm Economic Impact</i>
	Figure 31.2. Onshore cable corridor and LOCAI study area	
	Figure 31.3 Key social, community and health facilities within the LOCAI	
	Figure 31.4. Onshore Cable Corridor and LOCAI study area	
<b>32 Tourism and Recreation</b>	Figure 32.1 Tourism and recreation onshore study area	N/A
	Figure 32.2 Sailing and yachting clubs along the Essex and Suffolk Coastline	
	Figure 32.3 Notable coastal tourism and recreation assets	
	Figure 32.4 PRoW and other non-motorised routes	
	Figure 32.5 Camping and caravanning sites open access lands	
<b>33 Climate Change</b>	N/A	<i>Appendix 33.1 Greenhouse Gas Assessment Methodology</i>

# ASSOCIATED DOCUMENTS

DOCUMENT	ASSOCIATED APPENDICES
<i>Report to Inform Appropriate Assessment (RIAA)</i>	Appendix 1 Habitats Regulations Assessment (HRA) Screening Appendix 2 Modelling the abundance of red-throated divers
<i>Offshore Ornithology In Principle Compensation Options Review</i>	N/A
<i>Marine Conservation Zone (MCZ) Assessment Preliminary Stage 1 Assessment</i>	Appendix 1 MCZ Assessment Screening Report Appendix 2 MCZA Sensitivity Ranges Appendix 3 MCZ In Principle Measures of Equivalent Environmental Benefit Review (MEEB)
<i>Onshore Substation Design Vision</i>	N/A
<i>Schedule of Mitigation</i>	N/A

\* Information within these documents has been redacted. If you require the unredacted versions please email [contact@northfallsoffshore.com](mailto:contact@northfallsoffshore.com)

## CONTACT US

**Telephone:** 0800 254 5340

**Email:** [contact@northfallsoffshore.com](mailto:contact@northfallsoffshore.com)

**Post:** FREEPOST North Falls



**NORTH FALLS**

*Offshore Wind Farm*







# NORTH FALLS

*Offshore Wind Farm*



## CONTACT US

Website: [www.northfallsoffshore.com](http://www.northfallsoffshore.com)  
Telephone: 0800 254 5340  
Email: [contact@northfallsoffshore.com](mailto:contact@northfallsoffshore.com)  
Post: FREEPOST North Falls



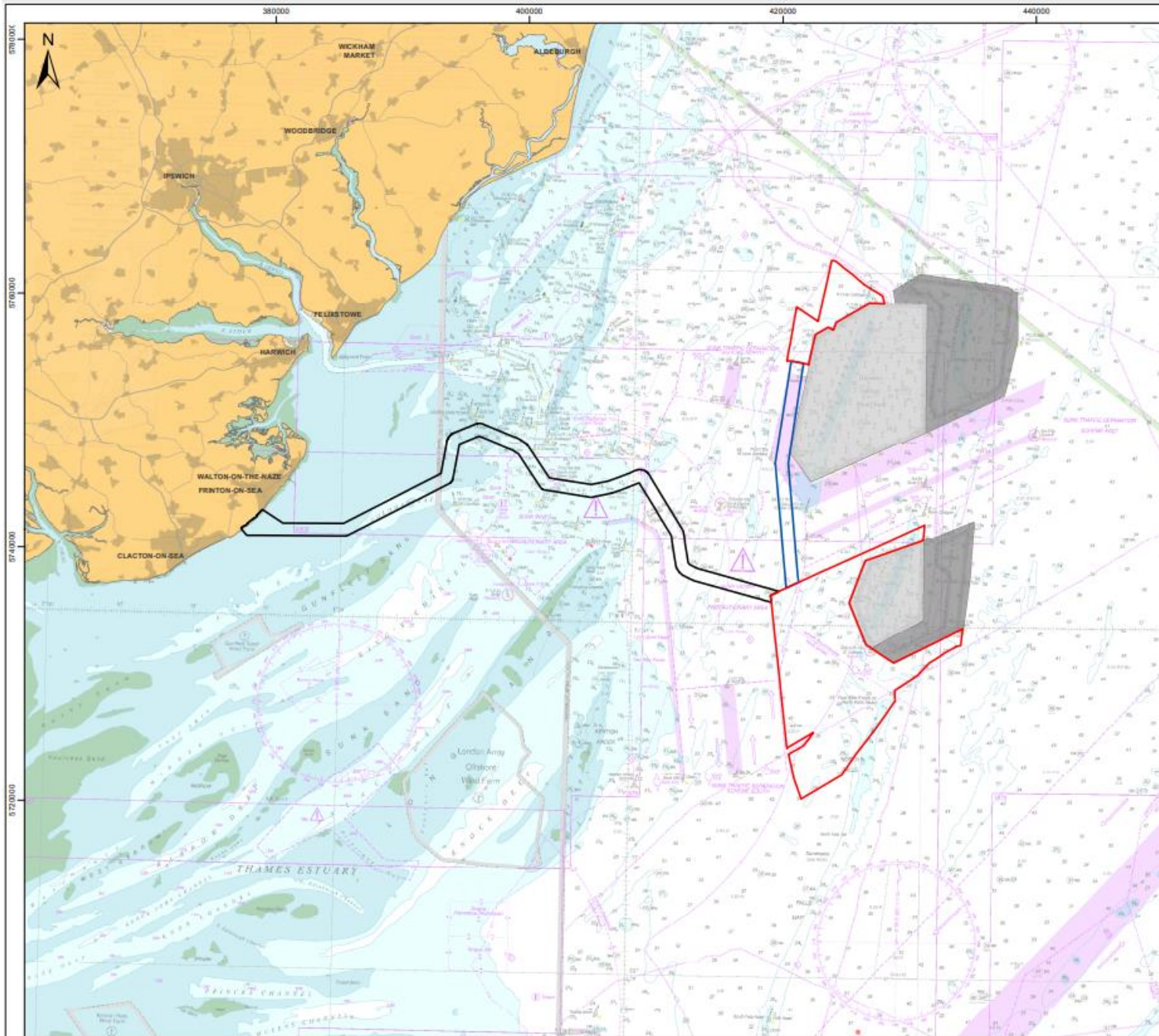
# NORTH FALLS

*Offshore Wind Farm*

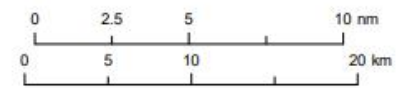
## APPENDIX F

### F.21

*Stage 3 (statutory) consultation project maps*



- Legend**
- North Falls Array Areas
  - Offshore Cable Corridor
  - Interconnector Cable Corridor
  - Galloper Offshore Wind Farm
  - Greater Gabbard Offshore Wind Farm



Data Source: © The Crown Estate, 2022. © HaskoningDHV UK Ltd, 2022.  
 © British Crown and OceanWave, 2022. All rights reserved. License No: EMS-EK001-664144  
 Not to be used for Navigation. Sources: Esri, GEBCO, NOAA, National Geographic, Garmin, HERE, Geonames.org, and other contributors.

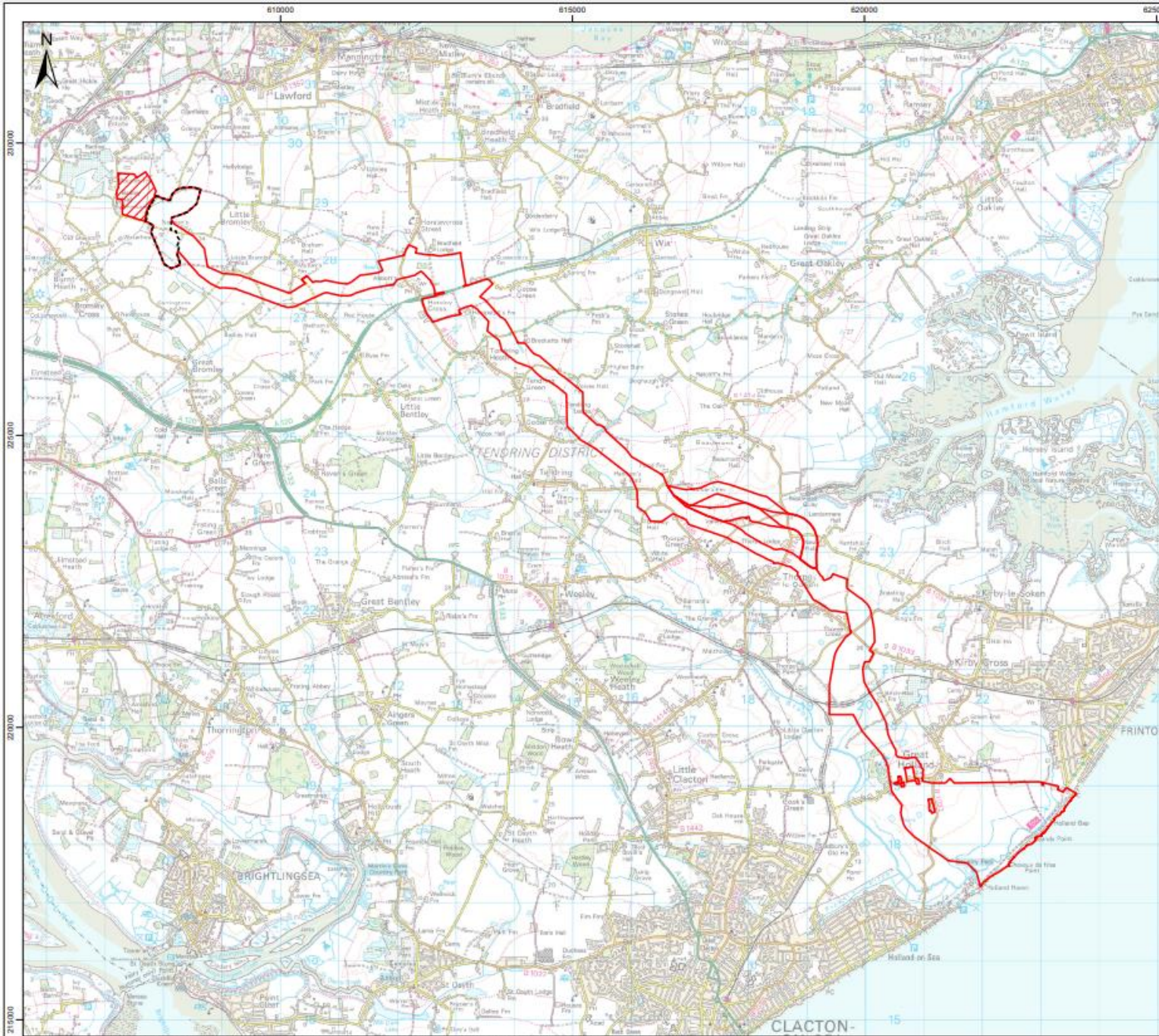
Drawing Title

### Offshore Project Boundary

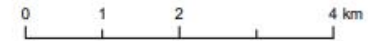
Rev	Date	Remarks	Drawn	Check
01	13/06/2022	First issue	FC	GK

Drawing Number		Figure Number	
<b>PB9244-RHD-ZZ-OF-DR-GS-0178</b>		<b>1.1</b>	
Scale	Plot Size	Datum	Projection
1:300,000	A3	WGS84	UTM31N





- Legend**
- North Falls Onshore Project Area
  - East Anglia GREEN Proposed Substation Location
  - North Falls Onshore Substation Zone



Data Source: © HaskoningDHV UK Ltd. 2022.  
 © Crown copyright and database rights 2022 Ordnance Survey 0100031673. Contains Ordnance Survey data © Crown copyright and database rights 2022.

Drawing Title  
**Onshore Project Boundary**

Rev	Date	Remarks	Drawn	Check
01	03/08/2022	First issue	FC	GC

Drawing Number  
**PB9244-RHD-ZZ-ON-DR-GS-0193**

Figure Number  
**1.2**

Scale: 1:65,000 | Plot Size: A3 | Datum: OSG836 | Projection: BNG



File ref: C:\Users\320509\Box\PB9244 North Falls Scoping and IAP\PB9244 TeamE - WPE\02 GIS\02\_Shared\02\_Figures\07\_PICRCH\_1\_Instruction\PB9244\_RHD\_ZZ\_ON\_DR\_GS\_0193\_DrawingPage\Boundary.mxd



# NORTH FALLS

*Offshore Wind Farm*

## APPENDIX F

### F.22

*List of stakeholders consulted for stage 3  
(statutory) consultation*

<b>Consultee</b>	<b>Notes</b>
Marine Management Organisation	x 9 contacts consulted
The Crown Estate	x 1 contact consulted
Natural England	x 7 contacts consulted
Maritime and Coastguard Agency	x 4 contacts consulted
Port of London Authority (PLA)	x 2 contacts consulted
Harwich Haven Authority (HHA)	x 2 contacts consulted
Port of Felixstowe	x 1 contact consulted
Harwich International Port	x 1 contact consulted
HM Coastguard	x 2 contacts consulted
Kent & Essex Inshore Fisheries and Conservation Authority (IFCA)	x 2 contacts consulted
Historic England	x 8 contacts consulted
JNCC	x 1 contact consulted
Ministry of Defence - Offshore Safeguarding team	x 1 contact consulted
Defence Infrastructure Organisation	x 2 contacts consulted
Trinity House	x 4 contacts consulted
Civil Aviation Authority	x 5 contacts consulted
Chamber of Shipping	x 2 contacts consulted
NATS Safeguarding	x 1 contact consulted
RSPB	x 2 contacts consulted
Whale and Dolphin Conservation Society	x 1 contact consulted
The Wildlife Trusts	x 3 contacts consulted
Essex Wildlife Trust	x 2 contacts consulted
The Woodland Trust	x 1 contact consulted
National Trust	x 2 contacts consulted
Essex Coast Organisation	x 1 contact consulted
Royal National Lifeboat Institution	x 2 contacts consulted
Royal Yachting Association	x 2 contacts consulted
Cruising Association	x 1 contact consulted
Cefas	x 2 contacts consulted
ABP Ports	x 1 contact consulted
UK Hydrographic Office	x 5 contacts consulted
Kingfisher	x 1 contact consulted
National Federation of Fishermen's Organisations	x 2 contacts consulted
Environment Agency	x 3 contacts consulted
Network Rail Infrastructure Ltd	x 2 contacts consulted
Tarchon Energy Limited	x 1 contact consulted

National Grid Electricity Transmission	x 4 contacts consulted
NeuConnect Britain Ltd	x 4 contacts consulted
BritNed Development Ltd	x 3 contacts consulted
Century Link	x 2 contacts consulted
National Grid	x 1 contact consulted
National Grid - East Anglia Green	x 1 contact consulted
National Grid Ventures	x 1 contact consulted
Royal National Lifeboat Institute	x 1 contact consulted
Police, Fire and Crime Commissioner for Essex	x 2 contacts consulted
Essex County Fire and Rescue Service	x 1 contact consulted
Tendring District Council	x 2 contacts consulted
Frinton and Walton Parish Council	x 1 contact consulted
Thorpe-le-Soken Parish Council	x 1 contact consulted
Little Clacton Parish Council	x 1 contact consulted
Essex County Council	x 2 contacts consulted
Highways England	x 1 contact consulted
Public Health England	x 2 contacts consulted
Health and Safety Executive	x 1 contact consulted
NHS England	x 1 contact consulted
Suffolk and North East Essex Integrated Care Board	x 2 contacts consulted
North East Essex Clinical Commissioning Group	x 1 contact consulted
Coal Authority	x 1 contact consulted
Canal and River Trust	x 1 contact consulted
Forestry Commission (East and Midlands)	x 1 contact consulted
East Suffolk and North Essex NHS Foundation Trust	x 1 contact consulted
East Of England Ambulance Service NHS Trust	x 1 contact consulted
Coast & Heaths AONB	x 1 contact consulted
Dedham Vale	x 1 contact consulted
Colchester Borough Council	x 1 contact consulted
Babergh District Council	x 1 contact consulted
Suffolk County Council	x 1 contact consulted
East Suffolk County Council	x 1 contact consulted
East Suffolk District Council	x 1 contact consulted
Hertfordshire County Council	x 1 contact consulted
Cambridgeshire County Council	x 1 contact consulted
Southend-on-Sea Borough Council	x 1 contact consulted

Thurrock Council	x 1 contact consulted
London Borough of Enfield	x 1 contact consulted
London Borough of Waltham Forest	x 1 contact consulted
London Borough of Redbridge	x 1 contact consulted
London Borough of Havering	x 1 contact consulted
Royal Mail	x 1 contact consulted
NATS	x 1 contact consulted
Homes England	x 1 contact consulted
Great Oakley Parish Council	x 1 contact consulted
Great Bentley Parish Council	x 1 contact consulted
Elmstead Parish Council	x 1 contact consulted
Great Bromley Parish Council	x 1 contact consulted
Ardleigh Parish Council	x 2 contacts consulted
Mistley Parish Council	x 1 contact consulted
Lawford Parish Council	x 1 contact consulted
Tendring Parish Council	x 1 contact consulted
Beaumont-cum-Moze Parish Council	x 1 contact consulted
Bradfield Parish Council	x 1 contact consulted
Wix Parish Council	x 1 contact consulted
Frating Parish Council	x 1 contact consulted
Weeley Parish Council	x 1 contact consulted
Little Bentley Parish Council	x 1 contact consulted
Little Bromley Parish Council	x 1 contact consulted
St. Osyth Parish Council	x 1 contact consulted
Highways England Historical Railways Estate	x 1 contact consulted
Affinity Water	x 1 contact consulted
Anglian Water	x 1 contact consulted
Angilan Water	x 1 contact consulted
Cadent Gas Limited	x 1 contact consulted
Last Mile Gas Ltd	x 1 contact consulted
Energy Assets Pipelines Limited	x 1 contact consulted
ES Pipelines Ltd	x 3 contacts consulted
ESP Networks Ltd	x 1 contact consulted
ESP Connections Ltd	x 1 contact consulted
Fulcrum Pipelines Limited	x 1 contact consulted
Harlaxton Gas Networks Limited	x 1 contact consulted
GTC Pipelines Limited	x 1 contact consulted



Independent Pipelines Limited	x 1 contact consulted
Indigo Pipelines Limited	x 1 contact consulted
Leep Gas Networks Limited	x 1 contact consulted
Murphy Gas Networks limited	x 1 contact consulted
Quadrant Pipelines Limited	x 1 contact consulted
National Grid Gas Plc	x 1 contact consulted
Scotland Gas Networks Plc	x 1 contact consulted
Southern Gas Networks Plc	x 1 contact consulted
Greater Gabbard Offshore Wind Limited	x 1 contact consulted
Galloper Wind Farm Limited	x 1 contact consulted
Five Esutaries Offshore Windfarm Limited	x 1 contact consulted
Eclipse Power Network Limited	x 1 contact consulted
Last Mile Electricity Ltd	x 1 contact consulted
Energy Assets Networks Limited	x 1 contact consulted
ESP Electricity Limited	x 1 contact consulted
Forbury Assets Limited	x 1 contact consulted
Fulcrum Electricity Assets Limited	x 1 contact consulted
Harlaxton Energy Networks Limited	x 1 contact consulted
Independent Power Networks Limited	x 1 contact consulted
Indigo Power Limited	x 1 contact consulted
Leep Electricity Networks Limited	x 1 contact consulted
Murphy Power Distribution Limited	x 1 contact consulted
The Electricity Network Company Limited	x 1 contact consulted
UK Power Distribution Limited	x 1 contact consulted
Utility Assets Limited	x 1 contact consulted
Vattenfall Networks Limited	x 1 contact consulted
Eastern Power Networks Plc	x 1 contact consulted
UK Power Networks Limited	x 1 contact consulted
Diamond Transmission Partners Galloper Limited	x 1 contact consulted
Greater Gabbard OFTO Plc	x 1 contact consulted
National Grid Electricity Transmission Plc	x 1 contact consulted
TC Gunfleet Sands OFTO Ltd	x 1 contact consulted
Medway Council	x 1 contact consulted
Maldon District Council	x 1 contact consulted
Rochford District Council	x 1 contact consulted
The Netherlands	x 1 contact consulted

Scottish Natural Heritage	x 1 contact consulted
Marine Scotland	x 1 contact consulted
Marine Scotland	x 1 contact consulted



# NORTH FALLS

*Offshore Wind Farm*

## APPENDIX F

### F.23

*Hard to reach consultees for stage 3  
(statutory) consultation*

- ECL
- Essex Sight
- Royal Association for Deaf People
- Wheelchair Loan Charity
- Colchester Catalyst
- Livewell
- Tendring Leisure
- Tendring Youth Network
- Clacton Youth Centre
- Essex Youth Service
- YMCA Colchester
- Tendring Youth Assembly
- Clacton & District Hospital
- Connemara Lodge
- Colchester Hospital
- Clacton County High School
- Clacton Coastal Academy
- Sigma Sixth Form
- Colne Community School and College
- Tendring Technology College
- Tendring Education Strategic Board
- North East Essex Community Services
- eCare Community
- Tendring District Council – Housing Services
- Clacton Foodbank
- Essex Black & Ethnic Minority Research Centre
- Tendring & Colchester Minority Ethnic Partnership
- Essex County Council
- Essex Cultural Diversity Project
- Community Voluntary Services Tendring (CVST)
- Essex Community Foundation



# NORTH FALLS

*Offshore Wind Farm*

## APPENDIX F

### F.24

*Email to stakeholders at stage 3  
(statutory) consultation*

## COMMUNITY STAKEHOLDERS

### Subject: North Falls Offshore Wind Farm: Statutory Consultation

Dear Stakeholder

As someone with an interest in the project, we are writing to inform you of the start of the statutory consultation for the proposed North Falls Offshore Wind Farm, an equal joint venture between SSE Renewables and RWE. The consultation runs from 16 May to 14 July 2023. We welcome your involvement and feedback.

#### Consultation purpose

This is our third phase of consultation and its aim is to offer a further chance to review, influence and provide comments on our project proposals, and specifically on our preliminary environmental information report (PEIR). This is a key opportunity to influence the details of the application before it is finalised and submitted to the Planning Inspectorate

#### Consultation

From the start of the consultation, all documents and materials will be available to view and download from the [consultation portal](#), which can also be accessed from the [North Falls website](#).

#### Events

We will be hosting five in-person events in Essex and two online webinars.

Venue	Date (2023):	Time:
<b>Great Bromley Village Hall</b> Parsons Hill, Great Bromley, Colchester, CO7 7JA	Friday 2 June	3.30pm to 7.30pm
<b>Tendring Village Hall</b> Tendring, Clacton-on-Sea, CO16 0BG	Saturday 3 June	9am to 1pm
<b>McGrigor Hall</b> 85 Fourth Ave, Frinton-on-Sea, CO13 9EB	Thursday 8 June	3.30pm to 7.30pm
<b>Thorpe-le-Soken Women's Institute Hall</b> High Street, Thorpe-le-Soken, CO16 0EF	Friday 9 June	3.30pm to 7.30pm
<b>Ardleigh Village Hall</b> Station Road, Ardleigh, Essex, CO7 7RS	Saturday 10 June	9am to 1pm

Links to register for our webinars are on the welcome page of the consultation portal:

<b>Webinar (Zoom)</b>	Tuesday 13 June	6pm to 7:30pm
<b>Webinar (Zoom)</b>	Wednesday 21 June	6pm to 7:30pm

#### Visual impact – how will it look

For those in coastal regions potentially impacted by views of the wind farm, we have created a [3D interactive computer model](#) with views from 17 different coast locations to be able to see how it could look. This is in addition to photomontages available in the PEIR.

**To respond**

Responses can be submitted via a feedback form or the interactive map on the consultation portal; via feedback forms or postcards available at the consultation events; by email, or in writing to FREEPOST North Falls. Any responses related to this consultation should be received by 11.59pm on 14 July 2023.

The above contact details can also be used for any enquiries relating to the documents, plans and maps accompanying this consultation.

We look forward to your input.

With regards

Sue Vincent  
Communications and Stakeholder Manager  
North Falls Offshore Wind Farm

## SECTION 42 CONSULTEES

**Subject: North Falls Offshore Wind Farm: Statutory Consultation**

**North Falls Offshore Wind Farm: Statutory Consultation  
Section 42 of the Planning Act 2008 and/or Regulation 13 of the Infrastructure  
Planning (Environmental Impact Assessment) Regulations 2017**

Dear Sir/Madam,

We are writing to consult with you on the proposed North Falls Offshore Wind Farm (“North Falls” or “the Project”) that is being promoted by North Falls Offshore Wind Farm Limited (“the Applicant”), an equal joint venture between SSE Renewables and RWE.

You have been identified as a consultee for the purposes of Section 42 of the Planning Act 2008 (“the Act”) and/or Regulation 13 of the Infrastructure Planning (Environmental Impact Assessment) Regulations 2017 (“the EIA Regulations”), or it has been decided it is appropriate to write to you as a non-statutory consultee. The consultation includes:

- Prescribed bodies, host and neighbouring authorities, and any persons with an interest in the land affected by the Project under Section 42 of the Act;
- Affected local communities under Section 47 of the Act; and
- General publicity under Section 48 of the Act.

The consultation commences on 16 May 2023 and will close at 23.59 on 14 July 2023. Please see below for information on how to view and comment on the Project.

### **Project description**

North Falls is a proposed offshore wind farm located in the southern North Sea, approximately 20 kilometres from the East Anglia coast at its nearest point. An offer has been accepted from National Grid for an onshore grid connection in Tendring, North Essex, approximately 20 kilometres from its likely landfall location for that connection option near Frinton-on-Sea. North Falls is set to support the UK’s target of 50GW of installed offshore wind capacity by 2030. North Falls comprises:

- Up to 72 offshore wind turbine generators
- Up to two offshore substation platforms
- Platform interconnector cables
- Inter-array cables
- Three options for transmission infrastructure:

**Option 1:** Onshore electrical connection at a National Grid connection point within Tendring, Essex, with a project alone onshore cable route and onshore substation infrastructure;

**Option 2:** Onshore electrical connection at a National Grid connection point within Tendring, Essex, sharing all or part of an onshore cable route with separate onshore export cables with another project (such as Five Estuaries) where practicable, or

**Option 3:** Offshore electrical connection supplied by a third-party electricity network provider. Such a connection will potentially be identified through the OTNR process.



It is anticipated the proposed development consent order (DCO) will, among other things, authorise:

- Construction, operation and maintenance and decommissioning of an offshore wind generating station and associated development;
- The compulsory acquisition of land, and imposition of restrictions, powers to override suspend or extinguish rights over land and the temporary use of land;
- The application, modification and/or disapplication of legislation relevant to the Project including that relating to the compulsory acquisition of land; and
- Such ancillary, incidental and consequential provisions, licences, property rights, permits and consents as are necessary and/or convenient.

More detailed information is provided within the consultation materials.

### **Application for a Development Consent Order**

The Project will have a generating capacity exceeding 100MW and is therefore classified as a Nationally Significant Infrastructure Project (NSIP) for which a DCO is required. The DCO application will contain full details of the Project and will be accompanied by an Environmental Statement in accordance with the Act and the EIA Regulations.

North Falls is currently in the pre-application phase of the DCO application process. In accordance with the Act, the Applicant is required to consult on the proposed application prior to submission, and for application to have regard to consultation responses. A consultation report outlining the consultation processes undertaken, and how the responses have informed the final design of the Project will be included in the DCO application documents.

If the DCO application is accepted, the Planning Inspectorate will process and examine the application and make a recommendation for approval or refusal to the Secretary of State for Energy Security and Net Zero. The final decision to approve or refuse the application will be made by the Secretary of State.

### **Consultation materials**

The Applicant has prepared a Preliminary Environmental Information Report (PEIR) which has been informed by the Scoping Opinion issued by the Planning Inspectorate and which reports the results of the Environmental Impact Assessment (EIA) undertaken to date. The PEIR forms the basis of this consultation and also includes a non-technical summary. Its purpose is to enable consultees to understand the likely significant environmental effects of the project and to inform consultation responses. Please note however that EIA is an ongoing process and so the information contained within the PEIR is subject to change as the design develops.

From the start of the statutory consultation on 16 May 2023, the North Falls Preliminary Environmental Information Report (PEIR), a non-technical summary providing an overview of the proposals, consultation booklet and other documents, plans and maps showing the nature and location of the Project will be available to view and download free of charge via the consultation portal ([www.stat.northfallsoffshore.com](http://www.stat.northfallsoffshore.com)), which can also be accessed via the project

website ([www.northfallsoffshore.com](http://www.northfallsoffshore.com)). The PEIR chapters and reports can be accessed directly ([www.northfallsoffshore.com/peir](http://www.northfallsoffshore.com/peir)). Hard copies will also be available on request; details of how to request hard copies and any related charges, are set out in the Section 48 Notice. These documents, plans and maps will be available on the consultation portal until at least the end of the statutory consultation period at 11.59pm on 14 July 2023.

Please find attached the notice which publicises the consultation, as required by Section 48 of the Planning Act 2008 and Regulation 13 of the EIA Regulations. This includes further details of how to obtain copies of the consultation materials, together with other relevant information including the consultation events taking place.

### **Consultation responses**

Responses to this consultation must be received no later than 11:59pm on 14 July 2023. Responses received after this time may not be considered.

There are several ways to submit responses: via a feedback form or the interactive map on the project consultation portal ([www.stat.northfallsoffshore.com](http://www.stat.northfallsoffshore.com)); by email ([contact@northfallsoffshore.com](mailto:contact@northfallsoffshore.com)), or in writing (FREEPOST NORTH FALLS). Copies of the feedback form will also be available at the consultation events and can be submitted in person.

The above contact details can also be used for any enquiries relating to the documents, plans and maps accompanying this consultation.

*Please note that representations received and any accompanying personal data, such as the names of persons over 18, may be made public. If you do not wish personal information to be made public you should state that when submitting your representation. Responses and personal data may be provided to the Secretary of State, the Planning Inspectorate or other relevant statutory authorities in accordance with the requirements of the Planning Act 2008. To find out about how the Applicant will manage your personal data please refer to our Privacy Notice (<https://non-stat.northfallsoffshore.com/privacy/>).*

Yours faithfully,

Daniel Harper  
Consents Manager  
North Falls Offshore Wind Farm

## HARD TO REACH GROUPS

### Hard to reach groups including schools

#### Subject: North Falls Offshore Wind Farm: Statutory Consultation

Dear Stakeholder

We are writing to inform you of the start of the statutory consultation for the proposed North Falls Offshore Wind Farm, an equal joint venture between SSE Renewables and RWE. The consultation runs from 16 May to 14 July 2023. We welcome your involvement and feedback.

#### Consultation purpose

This is our third phase of consultation and its aim is to offer a further chance to review, influence and provide comments on our project proposals, and specifically on our preliminary environmental information report (PEIR). This is a key opportunity for anyone with an interest in the project to influence the details of the application before it is finalised and submitted to the Planning Inspectorate

#### Consultation

From the start of the consultation, all documents and materials will be available to view and download from the [consultation portal](#), which can also be accessed from the [North Falls website](#).

#### Events

We will be hosting five in-person events in Essex and two online webinars.

Venue	Date (2023):	Time:
<b>Great Bromley Village Hall</b> Parsons Hill, Great Bromley, Colchester, CO7 7JA	Friday 2 June	3.30pm to 7.30pm
<b>Tendring Village Hall</b> Tendring, Clacton-on-Sea, CO16 0BG	Saturday 3 June	9am to 1pm
<b>McGrigor Hall</b> 85 Fourth Ave, Frinton-on-Sea, CO13 9EB	Thursday 8 June	3.30pm to 7.30pm
<b>Thorpe-le-Soken Women's Institute Hall</b> High Street, Thorpe-le-Soken, CO16 0EF	Friday 9 June	3.30pm to 7.30pm
<b>Ardleigh Village Hall</b> Station Road, Ardleigh, Essex, CO7 7RS	Saturday 10 June	9am to 1pm

Links to register for our webinars are on the welcome page of the consultation portal:

<b>Webinar (Zoom)</b>	Tuesday 13 June	6pm to 7:30pm
<b>Webinar (Zoom)</b>	Wednesday 21 June	6pm to 7:30pm

#### Visual impact – how will it look

For those in coastal regions potentially impacted by views of the wind farm,

we have created a 3D interactive computer-generated model with views from 17 different coast locations to help people see how it could look. This is in addition to photomontages available in the PEIR.

**To respond**

Responses can be submitted via a feedback form or the interactive map on the consultation portal; via feedback forms or postcards available at the consultation events; by email, or in writing to FREEPOST North Falls. Any responses related to this consultation should be received by 11.59pm on 14 July 2023.

As you represent or have regular contact with people who may not necessarily engage with consultations such as this, we would be happy to discuss how we could further facilitate or encourage their involvement. Please contact me directly if this would be useful and we can arrange a discussion.

With regards

Sue Vincent  
Communications and Stakeholder Manager  
North Falls Offshore Wind Farm

## MPs

### Subject: North Falls Offshore Wind Farm: Statutory Consultation

Dear [MP]

As a relevant local Member of Parliament, we are writing to inform you of the start of the statutory consultation for the proposed North Falls Offshore Wind Farm, an equal joint venture between SSE Renewables and RWE. The consultation runs from 16 May to 14 July 2023. We welcome your involvement and feedback.

#### Consultation purpose

This is our third phase of consultation and its aim is to offer a further chance to review, influence and provide comments on our project proposals, and specifically on our preliminary environmental information report (PEIR). This is a key opportunity for anyone with an interest in the project to influence the details of the application before it is finalised and submitted to the Planning Inspectorate

#### Consultation

From the start of the consultation, all documents and materials will be available to view and download from the [consultation portal](#), which can also be accessed from the [North Falls website](#).

#### Events

We will be hosting five in-person events in Essex and two online webinars.

Venue	Date (2023):	Time:
<b>Great Bromley Village Hall</b> Parsons Hill, Great Bromley, Colchester, CO7 7JA	Friday 2 June	3.30pm to 7.30pm
<b>Tendring Village Hall</b> Tendring, Clacton-on-Sea, CO16 0BG	Saturday 3 June	9am to 1pm
<b>McGrigor Hall</b> 85 Fourth Ave, Frinton-on-Sea, CO13 9EB	Thursday 8 June	3.30pm to 7.30pm
<b>Thorpe-le-Soken Women's Institute Hall</b> High Street, Thorpe-le-Soken, CO16 0EF	Friday 9 June	3.30pm to 7.30pm
<b>Ardleigh Village Hall</b> Station Road, Ardleigh, Essex, CO7 7RS	Saturday 10 June	9am to 1pm

Links to register for our webinars are on the welcome page of the consultation portal:

<b>Webinar (Zoom)</b>	Tuesday 13 June	6pm to 7:30pm
<b>Webinar (Zoom)</b>	Wednesday 21 June	6pm to 7:30pm

#### Visual impact – how will it look

For those in coastal regions potentially impacted by views of the wind farm, we have created a [3D interactive computer model](#) with views from 17 different coastal locations to visualise how it could look. This is in addition to photomontages available in the PEIR.

**To respond**

Responses can be submitted via a feedback form or the interactive map on the consultation portal; via feedback forms or postcards available at the consultation events; by email, or in writing to FREEPOST North Falls. Any responses related to this consultation should be received by 11.59pm on 14 July 2023.

We hope to see you at one of our events however, if you would like a meeting to discuss the consultation or any other aspects of the North Falls project, please let me know and we can arrange a mutually convenient time.

With regards

Sue Vincent  
Communications and Stakeholder Manager  
North Falls Offshore Wind Farm

## Councils with a view (Kent) – Chair / Clerk

### Subject: North Falls Offshore Wind Farm: Statutory Consultation

Dear Chair / Clerk

We are writing to inform you of the start of the statutory consultation for the proposed North Falls Offshore Wind Farm, an equal joint venture between SSE Renewables and RWE. The consultation runs from 16 May to 14 July 2023. We welcome your involvement and feedback.

#### Consultation purpose

This is our third phase of consultation and its aim is to offer a further chance to review, influence and provide comments on our project proposals, and specifically on our preliminary environmental information report (PEIR). This is a key opportunity for anyone with an interest in the project to influence the details of the application before it is finalised and submitted to the Planning Inspectorate

#### Consultation

From the start of the consultation, all documents and materials will be available to view and download from the [consultation portal](#), which can also be accessed from the [North Falls website](#).

#### Visual impact – how will it look

For those in coastal regions potentially impacted by views of the wind farm, we have created a [3D interactive computer model](#) with views from 17 different coast locations to be able to see how it could look. This is in addition to photomontages available in the PEIR. Panels with details of the consultation, including links to the model, will be displayed in Whitstable Library for the duration of the consultation period.

#### Events

We will be hosting five in-person events in Essex and two online webinars.

Venue	Date (2023):	Time:
<b>Great Bromley Village Hall</b> Parsons Hill, Great Bromley, Colchester, CO7 7JA	Friday 2 June	3.30pm to 7.30pm
<b>Tendring Village Hall</b> Tendring, Clacton-on-Sea, CO16 0BG	Saturday 3 June	9am to 1pm
<b>McGrigor Hall</b> 85 Fourth Ave, Frinton-on-Sea, CO13 9EB	Thursday 8 June	3.30pm to 7.30pm
<b>Thorpe-le-Soken Women's Institute Hall</b> High Street, Thorpe-le-Soken, CO16 0EF	Friday 9 June	3.30pm to 7.30pm
<b>Ardleigh Village Hall</b> Station Road, Ardleigh, Essex, CO7 7RS	Saturday 10 June	9am to 1pm

Links to register for our webinars are on the welcome page of the consultation portal:

<b>Webinar (Zoom)</b>	Tuesday 13 June	6pm to 7:30pm
-----------------------	-----------------	---------------

<b>Webinar (Zoom)</b>	Wednesday 21 June	6pm to 7:30pm
-----------------------	----------------------	---------------

**To respond**

Responses can be submitted via a feedback form or the interactive map on the consultation portal; via feedback forms or postcards available at the consultation events; by email, or in writing to FREEPOST North Falls. Any responses related to this consultation should be received by 11.59pm on 14 July 2023.

The above contact details can also be used for any enquiries relating to the documents, plans and maps accompanying this consultation.

We look forward to your input.

With regards

Sue Vincent  
Communications and Stakeholder Manager  
North Falls Offshore Wind Farm



## Councils with a view – Councillors (Kent)

### Subject: North Falls Offshore Wind Farm: Statutory Consultation

Dear Councillor

We are writing to inform you of the start of the statutory consultation for the proposed North Falls Offshore Wind Farm, an equal joint venture between SSE Renewables and RWE. The consultation runs from 16 May to 14 July 2023. We welcome your involvement and feedback.

#### Consultation purpose

This is our third phase of consultation and its aim is to offer a further chance to review, influence and provide comments on our project proposals, and specifically on our preliminary environmental information report (PEIR). This is a key opportunity for anyone with an interest in the project to influence the details of the application before it is finalised and submitted to the Planning Inspectorate

#### Consultation

From the start of the consultation, all documents and materials will be available to view and download from the [consultation portal](#), which can also be accessed from the [North Falls website](#).

#### Visual impact – how will it look

For those in coastal regions potentially impacted by views of the wind farm, we have created a [3D interactive computer model](#) with views from 17 different coastal locations to be able to see how it could look. This is in addition to photomontages available in the PEIR. Panels with details of the consultation, including links to the model, will be displayed in Whitstable Library for the duration of the consultation period.

#### Events

We will be hosting five in-person events in Essex and two online webinars.

Venue	Date (2023):	Time:
<b>Great Bromley Village Hall</b> Parsons Hill, Great Bromley, Colchester, CO7 7JA	Friday 2 June	3.30pm to 7.30pm
<b>Tendring Village Hall</b> Tendring, Clacton-on-Sea, CO16 0BG	Saturday 3 June	9am to 1pm
<b>McGrigor Hall</b> 85 Fourth Ave, Frinton-on-Sea, CO13 9EB	Thursday 8 June	3.30pm to 7.30pm
<b>Thorpe-le-Soken Women's Institute Hall</b> High Street, Thorpe-le-Soken, CO16 0EF	Friday 9 June	3.30pm to 7.30pm
<b>Ardleigh Village Hall</b> Station Road, Ardleigh, Essex, CO7 7RS	Saturday 10 June	9am to 1pm

Links to register for our webinars are on the welcome page of the consultation portal:

<b>Webinar (Zoom)</b>	Tuesday 13 June	6pm to 7:30pm
-----------------------	-----------------	---------------

<b>Webinar (Zoom)</b>	Wednesday 21 June	6pm to 7:30pm
-----------------------	----------------------	---------------

**To respond**

Responses can be submitted via a feedback form or the interactive map on the consultation portal; via feedback forms or postcards available at the consultation events; by email, or in writing to FREEPOST North Falls. Any responses related to this consultation should be received by 11.59pm on 14 July 2023.

The above contact details can also be used for any enquiries relating to the documents, plans and maps accompanying this consultation.

We look forward to your input.

With regards

Sue Vincent  
Communications and Stakeholder Manager  
North Falls Offshore Wind Farm

## Clerks and chairs (Suffolk parishes with a view)

### Subject: North Falls Offshore Wind Farm: Statutory Consultation

Dear Clerk / Chair

We are writing to inform you of the start of the statutory consultation for the proposed North Falls Offshore Wind Farm, an equal joint venture between SSE Renewables and RWE. The consultation runs from 16 May to 14 July 2023. We welcome your involvement and feedback.

#### Consultation purpose

This is our third phase of consultation and its aim is to offer a further chance to review, influence and provide comments on our project proposals, and specifically on our preliminary environmental information report (PEIR). This is a key opportunity for anyone with an interest in the project to influence the details of the application before it is finalised and submitted to the Planning Inspectorate

#### Consultation

From the start of the consultation, all documents and materials will be available to view and download from the [consultation portal](#), which can also be accessed from the [North Falls website](#).

#### Visual impact – how will it look

For those in coastal regions potentially impacted by views of the wind farm, we have created a [3D interactive computer model](#) with views from 17 different coast locations to visualise how it could look. This is in addition to photomontages available in the PEIR. Panels with details of the consultation, including links to the model, will be displayed in Aldeburgh, Felixstowe and Southwold libraries for the duration of the consultation period.

#### Events

We will be hosting five in-person events in Essex and two online webinars.

Venue	Date (2023):	Time:
<b>Great Bromley Village Hall</b> Parsons Hill, Great Bromley, Colchester, CO7 7JA	Friday 2 June	3.30pm to 7.30pm
<b>Tendring Village Hall</b> Tendring, Clacton-on-Sea, CO16 0BG	Saturday 3 June	9am to 1pm
<b>McGrigor Hall</b> 85 Fourth Ave, Frinton-on-Sea, CO13 9EB	Thursday 8 June	3.30pm to 7.30pm
<b>Thorpe-le-Soken Women's Institute Hall</b> High Street, Thorpe-le-Soken, CO16 0EF	Friday 9 June	3.30pm to 7.30pm
<b>Ardleigh Village Hall</b> Station Road, Ardleigh, Essex, CO7 7RS	Saturday 10 June	9am to 1pm

Links to register for our webinars are on the welcome page of the consultation portal:

<b>Webinar (Zoom)</b>	Tuesday 13 June	6pm to 7:30pm
-----------------------	-----------------	---------------

<b>Webinar (Zoom)</b>	Wednesday 21 June	6pm to 7:30pm
-----------------------	----------------------	---------------

**To respond**

Responses can be submitted via a feedback form or the interactive map on the consultation portal; via feedback forms or postcards available at the consultation events; by email, or in writing to FREEPOST North Falls. Any responses related to this consultation should be received by 11.59pm on 14 July 2023.

The above contact details can also be used for any enquiries relating to the documents, plans and maps accompanying this consultation.

We look forward to your input.

With regards

Daniel Harper  
Consents Manager  
North Falls Offshore Wind Farm

## Councillors (Suffolk & East Suffolk including with a view)

### Subject: North Falls Offshore Wind Farm: Statutory Consultation

Dear Councillor

We are writing to inform you of the start of the statutory consultation for the proposed North Falls Offshore Wind Farm, an equal joint venture between SSE Renewables and RWE. The consultation runs from 16 May to 14 July 2023. We welcome your involvement and feedback.

#### Consultation purpose

This is our third phase of consultation and its aim is to offer a further chance to review, influence and provide comments on our project proposals, and specifically on our preliminary environmental information report (PEIR). This is a key opportunity for anyone with an interest in the project to influence the details of the application before it is finalised and submitted to the Planning Inspectorate

#### Consultation

From the start of the consultation, all documents and materials will be available to view and download from the [consultation portal](#), which can also be accessed from the [North Falls website](#).

#### Visual impact – how will it look

For those in coastal regions potentially impacted by views of the wind farm, we have created a [3D interactive computer model](#) with views from 17 different coast locations to visualise how it could look. This is in addition to photomontages available in the PEIR. Panels with details of the consultation, including links to the model, will be displayed in Aldeburgh, Felixstowe and Southwold libraries for the duration of the consultation period.

#### Events

We will be hosting five in-person events in Essex and two online webinars.

Venue	Date (2023):	Time:
<b>Great Bromley Village Hall</b> Parsons Hill, Great Bromley, Colchester, CO7 7JA	Friday 2 June	3.30pm to 7.30pm
<b>Tendring Village Hall</b> Tendring, Clacton-on-Sea, CO16 0BG	Saturday 3 June	9am to 1pm
<b>McGrigor Hall</b> 85 Fourth Ave, Frinton-on-Sea, CO13 9EB	Thursday 8 June	3.30pm to 7.30pm
<b>Thorpe-le-Soken Women's Institute Hall</b> High Street, Thorpe-le-Soken, CO16 0EF	Friday 9 June	3.30pm to 7.30pm
<b>Ardleigh Village Hall</b> Station Road, Ardleigh, Essex, CO7 7RS	Saturday 10 June	9am to 1pm

Links to register for our webinars are on the welcome page of the consultation portal:

<b>Webinar (Zoom)</b>	Tuesday 13 June	6pm to 7:30pm
-----------------------	-----------------	---------------

<b>Webinar (Zoom)</b>	Wednesday 21 June	6pm to 7:30pm
-----------------------	----------------------	---------------

We will also be hosting a Councillor preview event from **2pm to 3pm on Friday 2 June** at Great Bromley Village Hall. You will receive an invitation to this in due course.

**To respond**

Responses can be submitted via a feedback form or the interactive map on the consultation portal; via feedback forms or postcards available at the consultation events; by email, or in writing to FREEPOST North Falls. Any responses related to this consultation should be received by 11.59pm on 14 July 2023.

The above contact details can also be used for any enquiries relating to the documents, plans and maps accompanying this consultation.

We look forward to your input.

With regards

Daniel Harper  
Consents Manager  
North Falls Offshore Wind Farm

## Chairs / Clerks of parish councils- Essex and Tendring

### Subject: North Falls Offshore Wind Farm: Statutory Consultation

Dear Clerk / Chair

We are writing to inform you of the start of the statutory consultation for the proposed North Falls Offshore Wind Farm, an equal joint venture between SSE Renewables and RWE. The consultation runs from 16 May to 14 July 2023. We welcome your involvement and feedback.

#### Consultation purpose

This is our third phase of consultation and its aim is to offer a further chance to review, influence and provide comments on our project proposals, and specifically on our preliminary environmental information report (PEIR). This is a key opportunity for anyone with an interest in the project to influence the details of the application before it is finalised and submitted to the Planning Inspectorate

#### Consultation details

From the start of the consultation, all documents and materials will be available to view and download from the [consultation portal](#), which can also be accessed from the [North Falls website](#). We will be hosting five in-person events in Essex and two webinars.

Venue	Date (2023):	Time:
<b>Great Bromley Village Hall</b> Parsons Hill, Great Bromley, Colchester, CO7 7JA	Friday 2 June	3.30pm to 7.30pm
<b>Tendring Village Hall</b> Tendring, Clacton-on-Sea, CO16 0BG	Saturday 3 June	9am to 1pm
<b>McGrigor Hall</b> 85 Fourth Ave, Frinton-on-Sea, CO13 9EB	Thursday 8 June	3.30pm to 7.30pm
<b>Thorpe-le-Soken Women's Institute Hall</b> High Street, Thorpe-le-Soken, CO16 0EF	Friday 9 June	3.30pm to 7.30pm
<b>Ardleigh Village Hall</b> Station Road, Ardleigh, Essex, CO7 7RS	Saturday 10 June	9am to 1pm

Links to register for our webinars are on the welcome page of the consultation portal:

<b>Webinar (Zoom)</b>	Tuesday 13 June	6pm to 7:30pm
<b>Webinar (Zoom)</b>	Wednesday 21 June	6pm to 7:30pm

Responses can be submitted via a feedback form or the interactive map on the consultation portal; via feedback forms or postcards available at the consultation events; by [email](#), or in writing to FREEPOST North Falls. Any responses related to this consultation should be received by 11.59pm on 14 July 2023.

The above contact details can also be used for any enquiries relating to the documents, plans and maps accompanying this consultation.

We look forward to your input.

With regards

Sue Vincent  
Communications and Stakeholder Manager  
North Falls Offshore Wind Farm



## Local Councillors Essex and Tendring

### Subject: North Falls Offshore Wind Farm: Statutory Consultation

Dear Councillor

We are writing to inform you of the start of the statutory consultation for the proposed North Falls Offshore Wind Farm, an equal joint venture between SSE Renewables and RWE. The consultation runs from 16 May to 14 July 2023. We welcome your involvement and feedback.

#### Consultation purpose

This is our third phase of consultation and its aim is to offer a further chance to review, influence and provide comments on our project proposals, and specifically on our preliminary environmental information report (PEIR). This is a key opportunity for anyone with an interest in the project to influence the details of the application before it is finalised and submitted to the Planning Inspectorate

#### Consultation details

From the start of the consultation, all documents and materials will be available to view and download from the [consultation portal](#), which can also be accessed from the [North Falls website](#). We will be hosting five in-person events in Essex and two webinars.

Venue	Date (2023):	Time:
<b>Great Bromley Village Hall</b> Parsons Hill, Great Bromley, Colchester, CO7 7JA	Friday 2 June	3.30pm to 7.30pm
<b>Tendring Village Hall</b> Tendring, Clacton-on-Sea, CO16 0BG	Saturday 3 June	9am to 1pm
<b>McGrigor Hall</b> 85 Fourth Ave, Frinton-on-Sea, CO13 9EB	Thursday 8 June	3.30pm to 7.30pm
<b>Thorpe-le-Soken Women's Institute Hall</b> High Street, Thorpe-le-Soken, CO16 0EF	Friday 9 June	3.30pm to 7.30pm
<b>Ardleigh Village Hall</b> Station Road, Ardleigh, Essex, CO7 7RS	Saturday 10 June	9am to 1pm

Links to register for our webinars are on the welcome page of the consultation portal:

<b>Webinar (Zoom)</b>	Tuesday 13 June	6pm to 7:30pm
<b>Webinar (Zoom)</b>	Wednesday 21 June	6pm to 7:30pm

We will also be hosting a Councillor preview event from **2pm to 3pm on Friday 2 June** at Great Bromley Village Hall. You will receive an invitation to this in due course.

Responses can be submitted via a feedback form or the interactive map on the consultation portal; via feedback forms or postcards available at the consultation events; by [email](#), or in writing to FREEPOST North Falls. Any responses related to this consultation should be received by 11.59pm on 14 July 2023.

The above contact details can also be used for any enquiries relating to the documents, plans and maps accompanying this consultation.

With regards

Sue Vincent  
Communications and Stakeholder Manager  
North Falls Offshore Wind Farm



# NORTH FALLS

*Offshore Wind Farm*

## APPENDIX F

### F.24.1

*Letter to stakeholders at stage 3 (statutory)  
consultation launch*



## NORTH FALLS

*Offshore Wind Farm*

Our Reference:

004788663-01

Contact:

Daniel Harper

@sse.com

Date: Tuesday 16 May 2023

<<Add Recipient Name

Add Recipient Address

Line 1

Line 2

Line 3 >>

### *North Falls Offshore Wind Farm: Statutory Consultation*

#### *Section 42 of the Planning Act 2008 and/or Regulation 13 of the Infrastructure Planning (Environmental Impact Assessment) Regulations 2017*

Dear Sir/Madam,

We are writing to consult with you on the proposed North Falls Offshore Wind Farm (“North Falls” or “the Project”) that is being promoted by North Falls Offshore Wind Farm Limited (“the Applicant”), an equal joint venture between SSE Renewables and RWE.

You have been identified as a consultee for the purposes of Section 42 of the Planning Act 2008 (“the Act”) and/or Regulation 13 of the Infrastructure Planning (Environmental Impact Assessment) Regulations 2017 (“the EIA Regulations”), or it has been decided it is appropriate to write to you as a non-statutory consultee. The consultation includes:

- Prescribed bodies, host and neighbouring authorities, and any persons with an interest in the land affected by the Project under Section 42 of the Act;
- Affected local communities under Section 47 of the Act; and
- General publicity under Section 48 of the Act.

The consultation commences on 16 May 2023 and will close at 23.59 on 14 July 2023. Please see below for information on how to view and comment on the Project.

#### **Project Description**

North Falls is a proposed offshore wind farm located in the southern North Sea, approximately 20 kilometres from the East Anglia coast at its nearest point. An offer has been accepted from National Grid for an onshore grid connection in Tendring, North Essex, approximately 20 kilometres from its likely landfall location for that

connection option near Frinton-on-Sea. North Falls is set to support the UK's target of 50GW of installed offshore wind capacity by 2030. The Project comprises:

- Up to 72 offshore wind turbine generators
- Up to two offshore substation platforms
- Platform interconnector cables
- Inter-array cables
- Three options for transmission infrastructure:
  - Option 1: Onshore electrical connection at a National Grid connection point within Tendring, Essex, with a project alone onshore cable route and onshore substation infrastructure;
  - Option 2: Onshore electrical connection at a National Grid connection point within Tendring, Essex, sharing all or part of an onshore cable route with separate onshore export cables with another project (such as Five Estuaries) where practicable, or
  - Option 3: Offshore electrical connection supplied by a third-party electricity network provider. Such a connection will potentially be identified through the Offshore Transmission Network Review (OTNR) process.

It is anticipated the proposed development consent order (DCO) will, among other things, authorise:

- Construction, operation and maintenance and decommissioning of an offshore wind generating station and associated development;
- The compulsory acquisition of land, and imposition of restrictions, powers to override suspend or extinguish rights over land and the temporary use of land;
- The application, modification and/or disapplication of legislation relevant to the Project including that relating to the compulsory acquisition of land; and
- Such ancillary, incidental and consequential provisions, licences, property rights, permits and consents as are necessary and/or convenient.

More detailed information on the Project is provided within the consultation materials.

#### **Application for a Development Consent Order**

The Project will have a generating capacity exceeding 100MW and is therefore classified as a Nationally Significant Infrastructure Project (NSIP) for which a DCO is required. The DCO application will contain full details of the Project and will be accompanied by an Environmental Statement in accordance with the Act and the EIA Regulations.

The Project is currently in the pre-application phase of the DCO application process. In accordance with the Act, the Applicant is required to consult on the proposed application prior to submission, and for the application to have regard to consultation responses. A consultation report outlining the consultation processes undertaken, and how the responses have informed the final design of the Project will be included in the DCO application documents.

If the DCO application is accepted, the Planning Inspectorate will process and examine the application and make a recommendation for approval or refusal to the Secretary of State for Energy Security and Net Zero. The final decision to approve or refuse the application will be made by the Secretary of State.

#### **Consultation Materials**

The Applicant has prepared a Preliminary Environmental Information Report (PEIR) which has been informed by the Scoping Opinion issued by the Planning Inspectorate and which reports the results of the Environmental Impact Assessment (EIA) undertaken to date. The PEIR forms the basis of this consultation and also includes a non-technical summary. Its purpose is to enable consultees to understand the likely significant environmental effects of the Project and to inform consultation responses. Please note however that EIA is an ongoing process and so the information contained within the PEIR is subject to change as the design of the Project develops.

From the start of the statutory consultation on 16 May 2023, the North Falls PEIR, a non-technical summary providing an overview of the proposals, consultation booklet and other documents, plans and maps showing the nature and location of the Project will be available to view and download free of charge via the consultation portal ([www.stat.northfallsoffshore.com](http://www.stat.northfallsoffshore.com)), which can also be accessed via the project website ([www.northfallsoffshore.com](http://www.northfallsoffshore.com)). The PEIR chapters and reports can be accessed directly ([www.northfallsoffshore.com/peir](http://www.northfallsoffshore.com/peir)). Hard copies will also be available on request; details of how to request hard copies and any related charges, are set out in the Section 48 Notice. These documents, plans and maps will be available on the consultation portal until at least the end of the statutory consultation period at 11.59pm on 14 July 2023.

Please find enclosed a copy of the notice which publicises the consultation, as required by Section 48 of the Planning Act 2008 and Regulation 13 of the EIA Regulations. This includes further details of how to obtain copies of the consultation materials, together with other relevant information including the consultation events taking place.

### Consultation Responses

Responses to this consultation must be received no later than 11:59pm on 14 July 2023. Responses received after this time may not be considered.

There are several ways to submit responses: via a feedback form or the interactive map on the project consultation portal ([www.stat.northfallsoffshore.com](http://www.stat.northfallsoffshore.com)); by email ([contact@northfallsoffshore.com](mailto:contact@northfallsoffshore.com)), or in writing (FREEPOST NORTH FALLS). Copies of the feedback form will also be available at the consultation events and can be submitted in person.

The above contact details can also be used for any enquiries relating to the documents, plans and maps accompanying this consultation.

Please note that representations received and any accompanying personal data, such as the names of persons over 18, may be made public. If you do not wish personal information to be made public you should state that when submitting your representation. Responses and personal data may be provided to the Secretary of State, the Planning Inspectorate or other relevant statutory authorities in accordance with the requirements of the Planning Act 2008. To find out about how the Applicant will manage your personal data please refer to our Privacy Notice ([stat.northfallsoffshore.com/privacy](http://stat.northfallsoffshore.com/privacy)).

Yours faithfully,

  
Daniel Harper  
Consents Manager  
North Falls Offshore Wind Farm

Enc.  
Section 48 Notice



# NORTH FALLS

*Offshore Wind Farm*

## APPENDIX F

### F.25

*Reminder email to stakeholders at  
stage 3 (statutory) consultation*

**From:** Vincent, Sue  
**Sent:** 29 June 2023 16:39  
**Subject:** REMINDER: Two weeks until end of North Falls consultation

## **TWO WEEKS TO END OF CONSULTATION FOR NORTH FALLS OFFSHORE WIND FARM**

- *Consultation on proposed North Falls Offshore Wind Farm closes in two weeks*
- *Online consultation runs until Friday 14 July with details at <https://stat.northfallsoffshore.com/>*

**Stakeholders and communities have two weeks left to have their say on the proposed southern North Sea offshore wind farm, North Falls, which is carrying out its statutory consultation phase until Friday 14 July, 2023.**

North Falls is a proposed extension to the existing 504-megawatt Greater Gabbard Offshore Wind Farm, comprising an offshore array area of 150km<sup>2</sup> off the East Anglia coast and a proposed onshore grid connection in Tendring, Essex.

Following the project's previous two consultations in October 2021 and October 2022, this current consultation presents progress to date and updated proposals, particularly around options for transmission infrastructure.

Five face-to-face events were held in Tendring, Essex along with two webinars, which were designed to give the local community the chance to find out about the project proposals and talk to members of the North Falls team. The local events in Frinton-on-Sea, Great Bromley, Tendring, Thorpe-le-Soken and Ardleigh, and the two webinars, were held in late May and early June.

For those in coastal regions potentially impacted by views of the wind farm, North Falls has also created a [3D interactive computer model](#) with visualisations from 17 different coastal locations to be able to see how it could look.

The online consultation portal with all relevant details, including how to respond, remains open - <https://www.stat.northfallsoffshore.com/> - and the project team urges anyone who has comments about the proposals to send them to the project team before the consultation closes.

North Falls Offshore Wind Farm is being developed by a 50/50 joint venture company owned equally by SSE Renewables and RWE.

**Sue Vincent** External  
Communications & Stakeholder Engagement  
North Falls Offshore Wind Farm







# NORTH FALLS

*Offshore Wind Farm*

## APPENDIX F

### F.27

*Stage 3 (statutory) consultation site notices  
for unregistered land parcels*



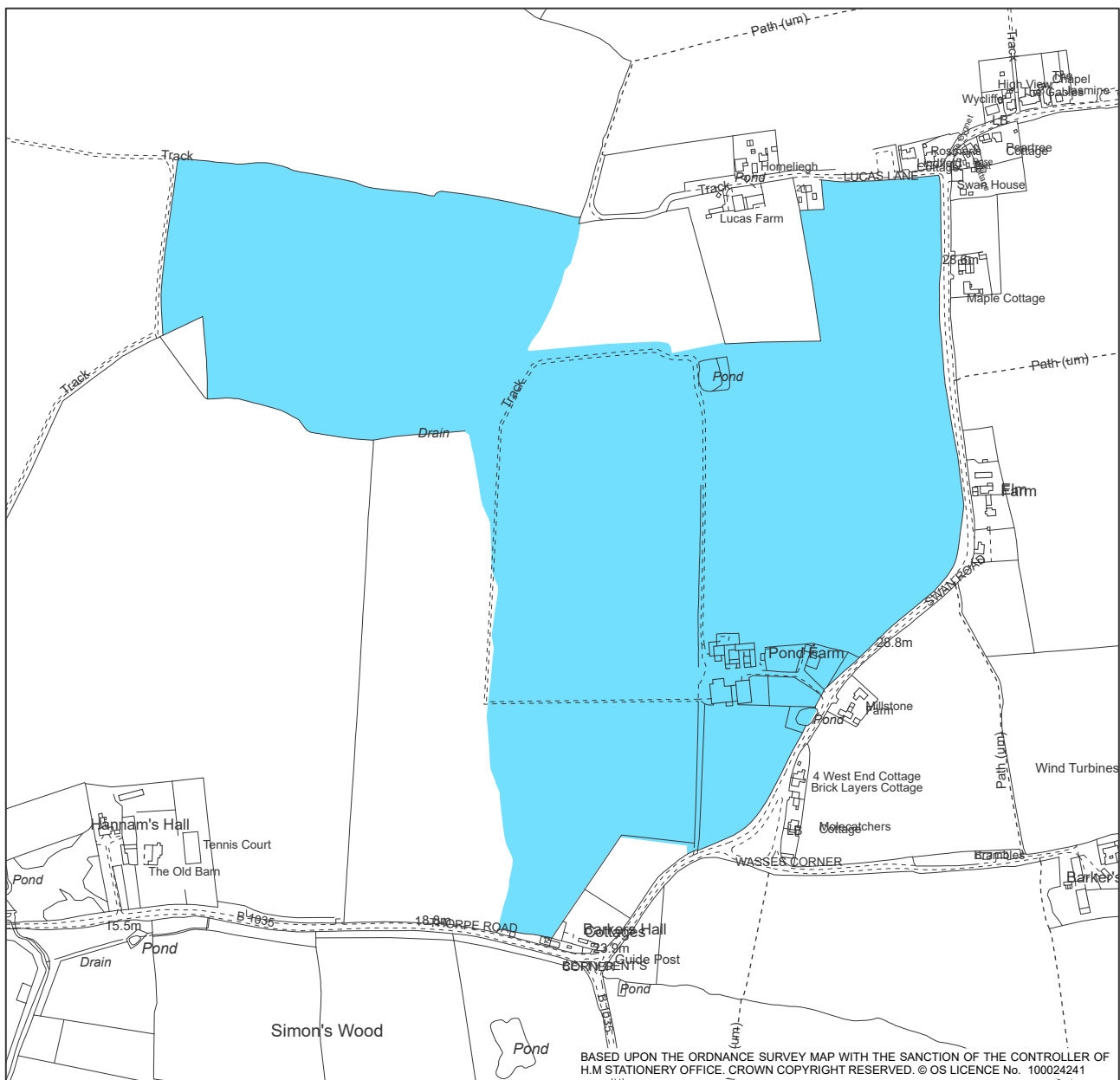
## SECTION 42 PLANNING ACT 2008

### PROPOSED APPLICATION FOR A DEVELOPMENT CONSENT ORDER FOR THE NORTH FALLS OFFSHORE WIND FARM

#### IMPORTANT NOTICE FOR PERSONS WITH AN INTEREST IN THIS LAND ATTACHED

**TO:** The owners, lessees, tenants and any occupiers of this land and the subsoil of this land comprising the area of land shown shaded blue on the below plan and anyone with an interest in it or with the power to sell, convey or release it or people who could have a relevant claim as a result of the North Falls Offshore Wind Farm project going ahead.

Parcel reference: 1274





# NORTH FALLS

*Offshore Wind Farm*

## APPENDIX F

### F.28

*Section 46 notification*



**NORTH FALLS**

*Offshore Wind Farm*

Our Reference:

34500091-01

Contact:



Date: 12<sup>th</sup> May 2023

Chris White  
The Planning Inspectorate  
Temple Quay House  
Temple Quay  
Bristol  
BS1 6PN

*North Falls Offshore Wind Farm  
Planning Act 2008 Section 46 Notification*

Dear Mr White

I am hereby notifying you under Section 46 of the Planning Act 2008 ("the Act") that North Falls Offshore Wind Farm Limited ("the Applicant") intends to apply under Section 37 of the Act for a Development Consent Order (DCO) to construct, operate, maintain, and decommission the North Falls Offshore Wind Farm ("the Project").

The DCO application will contain full details on the Project and will be accompanied by an Environmental Statement in accordance with the Act and the Infrastructure Planning (Environmental Impact Assessment) Regulations 2017 ("the EIA Regulations").

In accordance with Section 46 of the Act, please find enclosed a USB drive with electronic copies of the following documents, supplied to relevant consultees under Section 42 of the Act:

- 1) Example covering letter to statutory and/or non-statutory consultees under Section 42 of the Act and/or Regulation 13 of the EIA Regulations;
- 2) Example covering letter to land interests consulted under Section 42 of the Act;
- 3) Notice publicising the proposed DCO application under Section 48 of the Act;
- 4) Copy of North Falls Offshore Wind Farm Community Consultation leaflet;
- 5) Feedback Form;
- 6) Preliminary Environmental Information Report (PEIR);
- 7) Non-Technical Summary of the PEIR;
- 8) Plans showing the onshore and offshore locations of the Project;
- 9) Draft information for the Habitats Regulations Assessment; and
- 10) Draft information for the Marine Conservation Zone Assessment.

The consultation will run from 16 May 2023 and close at 11.59pm on 14 July 2023, which exceeds the minimum 28-day period prescribed by Section 45(2) of the Act. From the start of the statutory consultation all consultation documents will be available to view and download free of charge from the consultation portal ([www.stat.northfallsoffshore.com](http://www.stat.northfallsoffshore.com)), which can also be accessed via the project website ([www.northfallsoffshore.com](http://www.northfallsoffshore.com)). The PEIR chapters and reports can be accessed directly ([www.northfallsoffshore.com/peir](http://www.northfallsoffshore.com/peir)). Hard copies will also be available on request; details of how to request hard copies and any related charges, are set out in the Section 48 Notice.

For information the Applicant has also taken the decision to consult with a number of non-prescribed consultation bodies who may be interested in the Project over the same time period as the Section 42 consultation.

If you have any queries or require any additional information, please do not hesitate to contact me.

Yours sincerely,

Daniel Harper  
Consents Manager  
North Falls Offshore Wind Farm



# NORTH FALLS

*Offshore Wind Farm*

## APPENDIX F

### F.29

*Planning Inspectorate's acknowledgement  
of section 46 notification*



National Infrastructure Planning  
Temple Quay House  
2 The Square  
Bristol, BS1 6PN

Customer Services: 0303 444 5000  
e-mail: [northfalls@planninginspectorate.gov.uk](mailto:northfalls@planninginspectorate.gov.uk)

---

By email only

Your Ref:

Our Ref: EN010119

Date: 18 May 2023

---

Dear Mr Harper

**Planning Act 2008 (as amended) – Section 46 and The Infrastructure Planning (Environmental Impact Assessment) Regulations 2017 – Regulation 8**

**Proposed application by North Falls Offshore Wind Farm Ltd for an Order Granting Development Consent for the North Falls Offshore Wind Farm**

**Acknowledgement of receipt of information concerning proposed application**

Thank you for your email dated 15 May 2023 confirming that a USB memory stick had arrived at the offices of the Planning Inspectorate. Unfortunately, the Inspectorate is not able to access information held on USBs. You provided the documentation by email on 16 May 2023.

- Section 46 notice
- S42 covering letter to prescribed consultees
- S42 covering letter to land interests
- S48 Notice
- Onshore, and offshore project boundary maps
- North Falls leaflet, poster, consultation brochure, and feedback form.
- A link to the PEIR, the non-technical summary, Information to inform a Habitats Regulations Assessment, and information to inform a Marine Conservation Zone Assessment.

I acknowledge that you have notified the Planning Inspectorate of the proposed application for an Order granting development consent for the purposes of section 46 of the Planning Act 2008 and supplied the information for consultation under section 42. The following reference number has been given to the proposed application, which I would be grateful if you would use in subsequent communications:

EN010119

I also acknowledge notification in accordance with Regulation 8(1)(b) of the Infrastructure Planning (Environmental Impact Assessment) Regulations 2017 that you propose to provide an environmental statement in respect of the Proposed Development.

The role of the Planning Inspectorate in the application process is to provide independent and impartial advice about the procedures involved and to have open discussions with potential applicants, statutory bodies and others about the processes and requirements of the regime. It is important that you keep us accurately informed of your timetable and any changes that occur.

We will publish advice we give to you or other Interested Parties on our website and, if relevant, direct parties to you as the Applicant. We are happy to meet at key milestones and provide advice as the case progresses through the Pre-application stage.

Once you have prepared draft documents we are able to provide technical advice, in particular on the draft Development Consent Order, Explanatory Memorandum, the Consultation Report and any draft Habitats Regulations Assessment. You may therefore wish to build this into your timetable.

In the meantime, you may wish to have regard to the guidance and legislation material provided on our website including the Infrastructure Planning (Fees) Regulations 2010 (as amended) and associated guidance, which you will need to observe closely in establishing the correct fee to be submitted at the successive stages of the application process.

When seeking to meet your pre-application obligations you should also be aware of your obligation under the current data protection legislation to process personal data fairly and lawfully.

Please note that if you carry out more than one full s42 consultation you will be required to submit a new s46 notification at each consultation.

If you have any further queries, please do not hesitate to contact me.

Yours sincerely

*Deborah Allen*

**Deborah Allen**  
**Case Manager**

This decision was made by officials on behalf of the Secretary of State under delegated powers.

This communication does not constitute legal advice.

Please view our [Privacy Notice](#) before sending information to the Planning Inspectorate.





# NORTH FALLS

*Offshore Wind Farm*

## APPENDIX F

### F.30

*February 2022 early draft SoCC*



# NORTH FALLS

*Offshore Wind Farm*

## **STATEMENT OF COMMUNITY CONSULTATION (draft)**

*To be published in accordance with Section 47 (6) of the Planning Act 2008  
Spring 2022*

*Reference No: 004274925-01*



**NORTH FALLS**

*Offshore Wind Farm*

## REPORT TITLE

*Date: 11 February 2022*

<b>Project</b>	North Falls Offshore Wind Farm
<b>Sub-Project or Package</b>	Consents
<b>Document Title</b>	Statement of Community Consultation
<b>Document Reference</b>	Ecodoc 004274925-01
<b>Revision</b>	1
<b>Supplier Reference No</b>	n/a

This document and any information therein are confidential property of North Falls Offshore Wind Farm Limited and without infringement neither the whole nor any extract may be disclosed, loaned, copied or used for manufacturing, provision of services or other purposes whatsoever without prior written consent of North Falls Offshore Wind Farm Limited, and no liability is accepted for loss or damage from any cause whatsoever from the use of the document. North Falls Offshore Wind Farm Limited retains the right to alter the document at any time unless a written statement to the contrary has been appended.

<b>Revision</b>	<b>Date</b>	<b>Status/Reason for Issue</b>	<b>Originator</b>	<b>Checked</b>	<b>Approved</b>
01 (Draft A)	11/02/2022	For review by ECC / TDC	SV		

## Contents

<b>1.</b>	<b>Offshore wind in the UK</b>	<b>4</b>
<b>2.</b>	<b>Project background</b>	<b>4</b>
<b>3.</b>	<b>Development Consent Order application</b>	<b>5</b>
	3.1 Nationally significant infrastructure project	5
	3.2 Environmental information	6
<b>4.</b>	<b>What is a Statement of Community Consultation?</b>	<b>7</b>
	4.1 Consultation on the SoCC	7
<b>5.</b>	<b>Overview</b>	
	Error! Bookmark not defined.	
	5.1 Greater Gabbard Offshore Wind Farm	8
<b>6.</b>	<b>Project components</b>	
	Error! Bookmark not defined.	
<b>7.</b>	<b>The project: offshore</b>	<b>9</b>
	7.1 Offshore site	9
	7.2 Export cable corridor	9
<b>8.</b>	<b>The project: onshore</b>	<b>10</b>
	8.1 Landfall	10
	8.2 Onshore cable route & substation	10
	8.3 Onshore scoping area	11
<b>9.</b>	<b>Our consultation process</b>	<b>12</b>
<b>10.</b>	<b>Who will we consult</b>	<b>14</b>
<b>11.</b>	<b>What we will consult on</b>	<b>15</b>
<b>12.</b>	<b>How and where to have a say</b>	<b>15</b>
<b>13.</b>	<b>Submitting feedback and what happens next</b>	<b>16</b>
<b>14.</b>	<b>How to contact us</b>	<b>17</b>
	<b>Appendix A: Hard to reach groups</b>	<b>18</b>

## Maps

Map 1: Location of North Falls	8
Map 2: Initial North Falls Scoping Area	12

## 1. OFFSHORE WIND IN THE UK

Discussing weather is a recognised UK past time and while wet, grey and changeable skies offer an almost daily topic of conversation, our climate has one key benefit. As the windiest country in Europe, the UK is perfectly placed to generate renewable electricity from wind. It has made us the world leader in offshore wind with more installed capacity than any other country. In the past 10 years, the capacity of the UK's offshore wind farms has increased from only 1 gigawatt (GW) in 2010 to more than 10GW at the start of 2022, and costs per megawatt hour have been driven down by almost two-thirds.

In short, the offshore wind sector has become one of Britain's most laudable industrial success stories.

However, it is still a sector in its relative youth, with plenty of potential for further growth in the UK and export internationally. In 2020, the Government announced the ambition for the UK to install 40GW by 2030. This ambition goes even further than the Sector Deal, agreed in 2019 between the offshore wind sector and the UK Government, aiming for 30GW of installed capacity by 2030.

The UK Government's new vision is for offshore wind to power every home in the UK by 2030 and the plan has emerged as a central plank of Britain's green recovery after the coronavirus crisis. The aim is to ensure the nation "builds back better" as it works towards its 2050 climate goals including legislated decarbonisation targets.

While the green agenda needs to clear multiple hurdles to deliver on the promise of billions in investment and much-needed green jobs, projects like North Falls will play an essential role in reaching the target of 40GW by 2030. We intend to work closely with all our stakeholders, Government, local communities and the supply chain to ensure we make a positive contribution to the nation's Net Zero ambitions and economic prosperity.

## 2. PROJECT BACKGROUND

Together SSE Renewables and RWE Renewables have been active in the East Anglia region since the organisations jointly developed the Greater Gabbard Offshore Wind Farm, located 25km off the coast of Suffolk. The 504-megawatt (MW) project started construction in 2008 and at the time was the world's largest offshore wind farm. It has 140 wind turbines and was commissioned in September 2012.

In February 2017 The Crown Estate launched a process for wind farm operators to apply for extensions to their existing projects. This opportunity closed in May 2018, with eight project applications received.

A plan level Habitats Regulations Assessment (HRA) was undertaken to assess the possible impact of the proposed wind farm extensions on relevant nature conservation sites of European importance. Expert independent advisors were appointed, and their work included carrying out consultations with the statutory marine planning authorities, the statutory nature conservation bodies and a number of non-governmental stakeholders.

In August 2019, The Crown Estate announced the conclusion of the HRA confirming that seven of the extension projects, representing a total generating capacity of 2.85GW, would progress to the award of development rights, including what is now called North Falls Offshore Wind Farm.

The Agreement for Lease between North Falls Offshore Wind Farm and The Crown Estate was signed in Autumn 2020 and the project is now in the early stages of development with the aim of submitting a development consent order (DCO) application in 2023.

This indicative timeline shows the progress of the project to date and a high-level programme of activity to come.

<i>Date</i>	<i>Action</i>
Summer 2019	The Crown Estate concludes its Habitats Regulations Assessment. Seven projects totalling 2.85 GW of new capacity to be awarded agreements for lease.
Autumn 2020	Greater Gabbard Extension shareholder agreement signed between the two owners, SSE Renewables and RWE. Agreement for Lease signed with The Crown Estate. Early contracts awarded and start of detailed surveys to inform the Environmental Impact Assessment and Habitats Regulations Assessment.
2020 to 2023	Onshore and offshore surveys and studies, project planning and design, stakeholder consultation and community engagement undertaken, along with an Environmental Assessment and Project Level Habitats Regulations Assessment.
Spring 2023	Environmental Impact Assessment completed. Project Level Habitats Regulations Assessment completed.
2023	Development Consent Order and supporting Environmental Information submitted to the Planning Inspectorate.
2024/25	Planning Inspectorate makes recommendation to the Secretary of State. Secretary of State announces consent decision.
2025	Project design finalised, major component and construction contracts awarded and wind farm constructed.
2030	Wind farm expected to be operational by the end of the decade.

### 3. DEVELOPMENT CONSENT ORDER APPLICATION

#### 3.1 NATIONALLY SIGNIFICANT INFRASTRUCTURE PROJECT

As a nationally significant infrastructure project (NSIP), North Falls comes under the Planning Act 2008 development consent process, which was introduced to streamline the decision-making for such projects. Applicants, such as North Falls, must go through this process to gain permission to build their NSIP. The permission is called a development consent order (DCO). The government agency responsible for examining and making recommendations on applications for NSIPs is the Planning Inspectorate. The final decision on the application will be made by the Secretary of State for Business, Energy and Industrial Strategy (BEIS).

There are six stages to the development consent order process as follow overleaf.

## Application Process The Six Steps



The Pre-application phase, which runs until the project submits its development consent order (DCO) application, is the key period for local communities to input into the shaping of the project proposals. This phase for North Falls will run until mid to late 2023 and will include a total of four phases of consultation which are outlined in this Statement of Community Consultation.

You can read more about the DCO process, including the roles and responsibilities of participants and how to get involved at <https://infrastructure.planninginspectorate.gov.uk/>.

### 3.2 ENVIRONMENTAL INFORMATION

In accordance with Regulation 12 of the Planning (Environmental Impact Assessment) Regulations 2017, the project falls within the scope of the Environmental Impact Assessment Directive and, as such, we will be undertaking an Environmental Impact Assessment (EIA) for North Falls in accordance with Regulation 5 of The Infrastructure Planning (Environmental Impact Assessment) Regulations 2017. These documents will be consulted on during the EIA process and as the DCO application is prepared:

**Scoping Report** – This Scoping Report is the first stage of the EIA process. It outlines the receptors that will be considered during the EIA and the proposed data gathering and methodology in order to characterise the existing environment; assess potential impacts; and develop mitigation measures. This document provides high level information which will be expanded during a programme of consultation with technical stakeholders throughout the EIA process. It can be found on the North Falls website.

**Preliminary Environmental Information Report (PEIR)** – The document to follow the Scoping Report will be a PEIR, which will provide further detail on the interim findings of the site characterisation and impact assessment. We will seek feedback from local communities and other stakeholders prior to beginning our PEIR as part of our Pre-application Consultation 1 in late 2022.

**Environmental Statement (ES)** – The ES is the final report of the EIA, and it will be an evolution of the PEIR. It will incorporate the responses from our consultation and results of the surveys and research undertaken. The ES will also describe any changes made to the project proposals and mitigation measures to be implemented, and will form part of the submitted DCO application.

Copies of these reports will be made available online and as part of our public consultations.

## 4. WHAT IS A STATEMENT OF COMMUNITY CONSULTATION?

This Statement of Community Consultation (SoCC) has been prepared in accordance with section 47 of the Planning Act 2008 and sets out how North Falls, as a developer, will consult with the local community on the proposed development consent order (DCO) application.

This draft SoCC has been prepared to make local communities aware of how they will be consulted during the development process. Amongst other matters, it provides details on:

- THE PROPOSED OFFSHORE WIND FARM, WHAT IT WILL COMPRISE BOTH ONSHORE AND OFFSHORE
- HOW WE WILL CONSULT INCLUDING THE CONSULTATION TIMELINE
- WHO WE WILL CONSULT
- WHAT WE WILL CONSULT ON
- HOW PEOPLE WILL BE ABLE TO HAVE THEIR SAY ON THE PROPOSALS, AND WHAT WILL BE DONE WITH THE FEEDBACK SUBMITTED

We are now seeking a DCO for North Falls Offshore Wind Farm, an extension to the existing Greater Gabbard Offshore Wind Farm. With the potential to generate enough green energy to power the equivalent of at least 400,000 average British homes (depending on the final installed capacity), it will play a vital role in the greening of the UK's energy infrastructure and tackling the climate crisis.

However we cannot do this alone, we need input from communities to understand the local environment and ensure our project proposals evolve responsibly and with full engagement from those likely to be affected by the construction and operation of the wind farm. Local knowledge and views are important to us and will play an integral role in helping to shape the final plans. North Falls will welcome feedback and comments to our plans throughout the development process.

### 4.1 CONSULTATION ON THE SOCC

This draft document will be consulted on with local authorities that fall within the original North Falls Scoping Area. Feedback will be considered and incorporated into the final version that is shared with the wider community. The authorities consulted will be:

- ESSEX COUNTY COUNCIL
- TENDRING DISTRICT COUNCIL
- LAWFORD PARISH COUNCIL
- ST OSYTH PARISH COUNCIL
- GREAT BENTLEY PARISH COUNCIL
- WEELEY PARISH COUNCIL
- LITTLE BENTLEY PARISH COUNCIL
- TENDRING PARISH COUNCIL
- GREAT OAKLEY PARISH COUNCIL
- WIX PARISH COUNCIL
- THORRINGTON PARISH COUNCIL
- FRATING PARISH COUNCIL
- ALRESFORD PARISH COUNCIL
- ELMSTEAD PARISH COUNCIL
- GREAT BROMLEY PARISH COUNCIL
- LITTLE BROMLEY PARISH COUNCIL
- MISTLEY PARISH COUNCIL
- BRADFIELD PARISH COUNCIL
- BEAUMONT PARISH COUNCIL
- THORPE-LE-SOKEN PARISH COUNCIL
- FRINTON AND WALTON PARISH COUNCIL
- RAMSEY AND PARKESTON PARISH COUNCIL
- ARDLEIGH PARISH COUNCIL

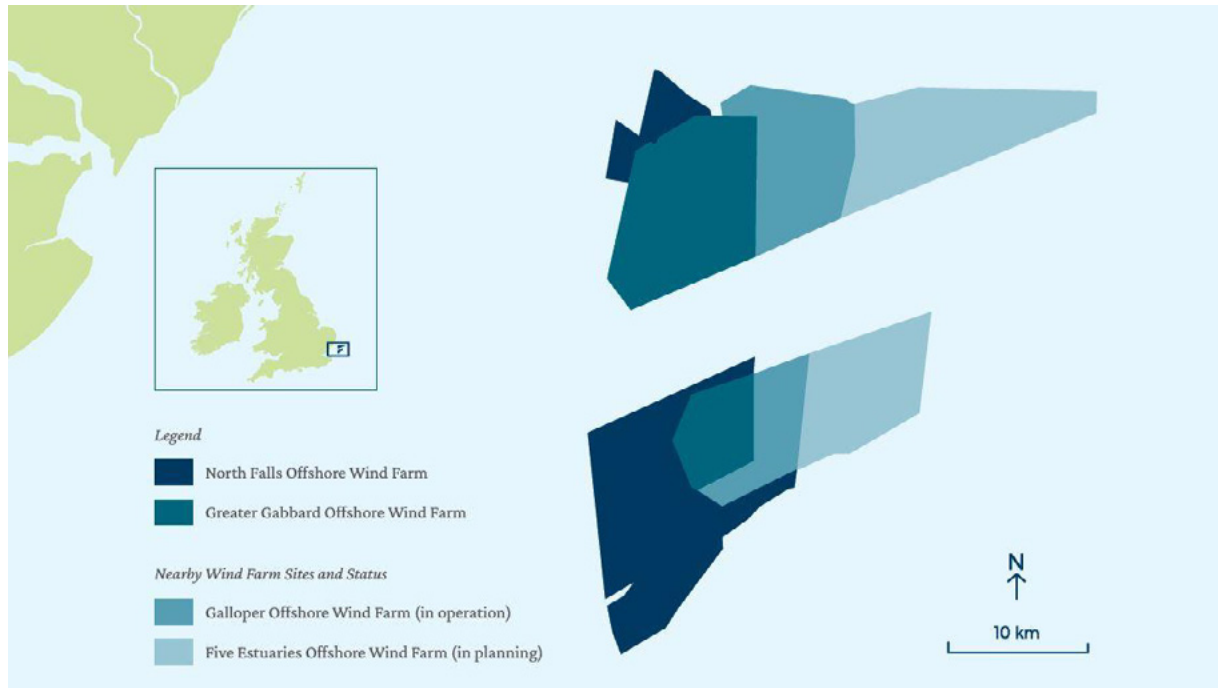
The final version of the document will be available to download from the North Falls website:  
<https://www.northfallsoffshore.com/>



## 5. OVERVIEW

North Falls will be located in the southern North Sea, approximately 20 kilometres from shore at its nearest point. It has a total area of 149.96 km<sup>2</sup> (across the two sections) which is roughly the area of Bristol. The project description for North Falls will evolve as work progresses, considering inputs from the scoping opinion, environmental assessments and ongoing engineering and survey work and feedback from our consultations.

MAP 1 – LOCATION OF NORTH FALLS AND ADJOINING OFFSHORE WIND PROJECTS



### 5.1 GREATER GABBARD OFFSHORE WIND FARM

North Falls' sister project, Greater Gabbard is a 504MW wind farm located in the southern North Sea, 20 kilometres from the East Anglia coast. It is owned equally by RWE Renewables and SSE Renewables, and is operated by the latter on behalf of both partners.

Greater Gabbard represented a £1.5 billion investment and created hundreds of jobs during construction as well as 100 long-term new roles at its (then) newly built operations and maintenance base in Lowestoft. It was officially opened in 2013.

When Greater Gabbard was built it was the UK's largest offshore wind farm, in the deepest waters and farthest from shore, so the supply chain was embryonic. It was able to utilise the vast experience of Lowestoft-based oil and gas firms and introduce multiple new suppliers into the offshore wind industry. Local firm Windcat Workboats, provider of crew transfer vessels (CTVs) to transport technicians to and from the site is just one local success story. The industry has matured significantly since that time but continues to welcome new players, particularly from related sectors keen to transition into offshore wind.

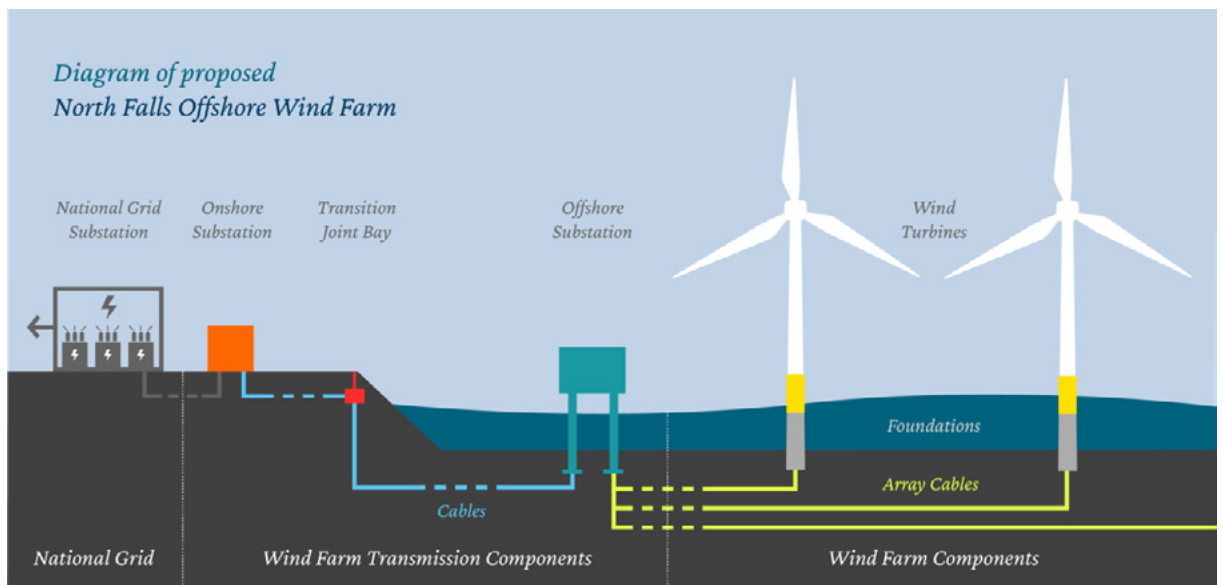
Of the 100 new recruits to the Greater Gabbard operations base, 95% were from the local area and since inception, more than 10 local apprentices have graduated from the wind farm's apprentice training scheme as wind turbine and balance-of-plant technicians. The wind farm has also offered junior engineer roles in disciplines including electrical engineering, SCADA engineering and control & instrumentation. Ex-fishermen have been employed to CTVs as part of the drive to find locally skilled people to fill requirements for roles.

North Falls will similarly provide contracting opportunities for local companies and career opportunities for local people throughout each phase of its lifecycle.

## 6. PROJECT COMPONENTS

At this stage we can give a high-level summary of the project's key components which are: an offshore array area (with two sections), proposed offshore cable route and landfall, and an onshore area of search.

As per other wind farms, North Falls will comprise: wind turbines on foundations, with the number and types to be determined, and array cables connecting the turbines in strings to up to two offshore substations, also on foundations. Subsea export cables will bring the power to shore, where they will connect to onshore buried cables that will carry the power further to a new purpose-built onshore substation. From here the power will be transmitted to a new National Grid substation, from where it will enter the national grid to be distributed to homes, businesses and industry.



## 7. THE PROJECT: OFFSHORE

The offshore project area lies within the Outer Thames Estuary, in the southern North Sea. Its closest point to land is 22km from the East Anglia coast.

### 7.1 OFFSHORE SITE

Like our sister project Greater Gabbard, the North Falls array area is split into two separate areas, with boundaries to take the existing shipping route into account. It will be within these two boundaries that turbines, array cables and offshore platform (substation) will be installed. The northern site covers approximately 21 km<sup>2</sup> while the larger southern site covers approximately 130km<sup>2</sup>.

The overall turbine and array layout will be finalised post-consent. Likewise, the location and design of the offshore substations will also be finalised during the design phase of the project.

### 7.2 EXPORT CABLE CORRIDOR

The electricity generated by North Falls will be transmitted to shore by export cables which will be located within an offshore export cable corridor. Our early site selection works have identified a preferred corridor to run from the southern array area to a proposed landfall on the Essex coast, located between Clacton-on-Sea and Frinton-on-Sea.

The preferred offshore export cable corridor passes to the north of the environmental designations Margate and Long Sands Special Area of Conservation (SAC) and Kentish Knock East Marine Conservation Zone (MCZ), with a small overlap with the Outer Thames Estuary Special Protection Area (SPA) as it approaches landfall. The project design also includes an interconnector cable between the northern and southern array areas.



**55km**

Provisional offshore cable route length



**Up to 4**

Maximum number of offshore export circuits



**0.5 – 3m**

Target minimum cable burial depth where buried



**2**

Maximum number of offshore substation platforms



**228km**

Estimated length of array cables

## 8. THE PROJECT: ONSHORE

Electricity generated by the wind farm will be transmitted to shore via subsea cables that will reach the North Essex coastline at a location known as ‘landfall’.

### 8.1 LANDFALL

The landfall - where the export cable from the wind farm will come to shore – will be sited in a location between Clacton-on-Sea and Frinton-on-Sea. The precise landfall location will be selected during 2022 and the team will also incorporate relevant consultation feedback and environmental and engineering survey data. There will be no permanent building at landfall, although there will be temporary disruption during the cable installation and general project construction. At the landfall site it is proposed to use a technique called horizontal directional drilling (HDD), which will take the cable deep under Holland Haven Marshes Site of Special Scientific Interest (SSSI) and so avoid crossing this designation.

### 8.2 ONSHORE CABLE ROUTE & SUBSTATION

The route North Fall’s cables take over land from landfall to the site of the onshore substation, as well as the site of the substation itself, will depend on the location of the grid connection offered by National Grid and the location of their own new substation. This is where the power from the wind farm will enter the national transmission system. The location of the grid connection is expected to be in North Essex, which is why North Falls has focussed our consultation efforts in that area. When National Grid finalise the location for their own substation, North Falls will be able to define a route for the onshore cables and a site for our own individual onshore substation.

The onshore cables will be buried underground to minimise visual and environmental impact, however during construction a temporary working corridor will be needed along with additional areas for temporary construction compounds. Generally, this temporary land will be in parallel with the cable corridor. Whilst North Falls will mitigate its impacts there will be some temporary disruption during

construction. Once the cables have been installed the temporary land will be restored to its former use. Where the cable route crosses features such as roads, watercourses and ecologically sensitive areas, the aim will be to go under them using horizontal directional drilling (HDD) as at the landfall, to avoid impacts on the features.

Details of the onshore substation location, its footprint and how it will look and how it will be screened with vegetation, will be consulted on during the pre-application process. The only long-term visible infrastructure onshore is likely to be the onshore substation.



**Horizontal directional drilling**

Proposed landfall installation method



**High voltage alternating current**

Electrical connection type



**18m**

Maximum onshore substation height



**1**

Number of onshore substations



**Up to 70m**

Estimated onshore cable route width



**200m x 250m**

Maximum onshore substation footprint

**8.3 ONSHORE SCOPING AREA**

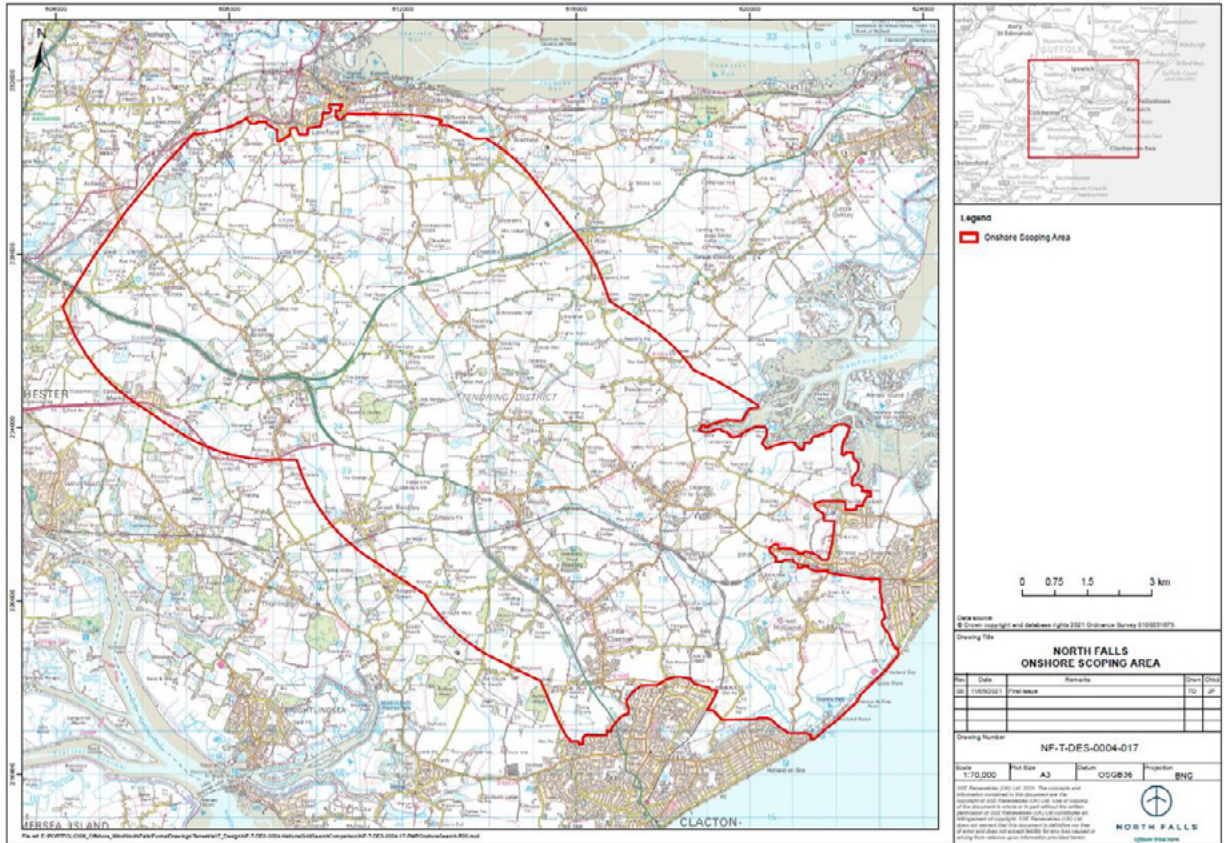
The North Falls team has defined an area in North Essex within which the grid connection point is likely to be located. This is known as the onshore 'scoping area'. This is the first stage in a long process and the actual footprint of any eventual development will be significantly smaller than this initial broad area of search which also defined the area of our introductory consultation held in late 2021.

The area was identified by filtering out broad constraints such as population centres and sites of importance for nature conservation, whilst keeping within a certain distance of existing National Grid infrastructure such as the 132kV line between Lawford and Little Clacton substations.

The subsequent onshore scoping area is approximately 150km<sup>2</sup> and located within the Tendring District of Essex. It extends from the coast, between Clacton-on-Sea and Frinton-on-Sea, approximately 20 kilometres inland.

Our ongoing site selection activity will look within this broad onshore scoping area to identify specific locations for each element of the onshore electrical infrastructure required for North Falls. Future consultations will present the outcome of this work and offer opportunities to input into the proposed locations.

MAP 2 – INITIAL NORTH FALLS SCOPING AREA



## 9. OUR CONSULTATION PROCESS

North Falls will undertake local stakeholder and community consultation throughout the Pre-application phase, and beyond. The team will act in accordance with the Planning Act 2008 duty to consult principle, and will engage with stakeholders, being any person, group or organisation with an interest in the project. North Falls will consult to gather feedback on the preliminary assessments, including methodology, and on the project itself as it begins to take shape.

Pre-application consultation is the main opportunity for stakeholders to review the plans, provide comments, submit feedback and have an influence on elements of the process and the evolution of the development. During this period there will be a multi-stage consultation process with all stakeholders, with each consultation period allowing no less than 28 days for responses.

Our objective is to ensure that stakeholders likely to be most directly affected by the proposals are engaged in the development of the wind farm from the start to finish, and have opportunities to comment on the proposals at key decision-making junctions. We aim to engage with and respond to stakeholders in a flexible and open way ensuring discussions are held and responses received in a timely manner to ensure their consideration the proposals take shape.

### *Introductory consultation*

North Falls undertook an initial introductory consultation to seek feedback on the project plans as they stood in Autumn 2021, including on the overall project, engagement approach, the Scoping Report and proposals so far. The information that was consulted on and the summaries of the responses and feedback received are still available to view on the consultation portal:

<https://consultation.northfallsoffshore.com/>.

### *Pre-application Consultation 1*

The next consultation will be our Pre-application Consultation 1, which will align to the start of the Preliminary Environmental Information Report (PEIR). This will present onshore and offshore

proposals, as well as EIA methodology and Statement of Community Consultation (following agreement with local authorities). This will include direct questions for input into specific elements of the plans as well as the opportunity to give wider opinions on the plans. Consultation methods will include: stakeholder meetings, consultation events, publications and an online consultation portal, with promotion via advertising, press stories, leaflet drops and direct emails. Ways to respond will be via the consultation portal, feedback forms (online and printed), attendance at events, project email or website contact form, freephone and freepost. This will be an informal consultation but will be run to the same standards and timeframes as formal consultation.

**Pre-application Consultation 2**

This will be the project’s single statutory consultation and will focus on the Preliminary Environmental Information Report (PEIR). The PEIR will incorporate the preliminary results of the EIA as well as feedback from prior consultations. This consultation will identify specific elements for input where it would be useful and feasible to implement. The methodologies will be the same as for the previous consultation, though adjusted if feedback suggested additions or alternatives. In terms of promotion, there will be an additional requirement for national advertising, though ways to respond will remain the same.

**Final Pre-application Consultation**

A fourth and final consultation stage will be shaped as needed, to ensure that consultation is specific to outstanding final inputs prior to the submission of the application. The first three consultation stages will involve all the consultees while the final stage will target specific stakeholders and exact format will be decided based on the outcomes of the previous consultation phases.

Community consultation events will be advertised and promoted widely in advance and wherever possible will be scheduled to avoid clashes with periods when stakeholders may not be able to attend, such as summer holidays. Stakeholders and members of the local community can also register to receive information and updates in between consultation phases.

As well as defined consultation periods, ad hoc and informal consultation will be carried out throughout on issues of specific interest, areas of expertise or related to statutory responsibility. This may include for example: specific consultation with nearby residents regarding the onshore substation site; liaison with fisheries and marine stakeholders on the export cable location or surveys; and targeted consultation with directly affected landowners, lessees, tenants and those with an interest in the land.

Indicative consultation programme	
The current timetable for our consultation phases is as follows:	
Ongoing	<b>Informal engagement</b> Continued engagement including communication of updated project proposals and impacts resulting from the consultations
25 October to 10 December 2021	<b>Informal introductory Consultation</b> Introduction to the project, scoping and early opportunity for feedback. This consultation has now concluded.
Spring 2022	<b>Statement of Community Consultation</b> Consultation with local Councils on this document that will subsequently be published on the website.
Autumn 2022	<b>Pre-application Consultation 1</b> Consultation prior to commencing Preliminary Environmental Information Report
2023	<b>Pre-application Consultation 2</b> Consultation on Preliminary Environmental Information Report
	<b>Final Pre-application Consultation</b> Final and limited consultation, primarily an engagement opportunity to communicate final Environmental Statement

## 10. WHO WILL WE CONSULT

Throughout development, North Falls will consult with stakeholders to gather feedback on the way the project is being assessed and on the project itself as it begins to take shape. The groups of stakeholders, or consultees, are defined as follows:

- THOSE DIRECTLY AFFECTED INCLUDING: STATUTORY BODIES, THE RELEVANT LOCAL AUTHORITIES, LANDOWNERS AND OTHERS WITH AN INTEREST IN THE LAND OR WHO MAY BE AFFECTED BY THE CONSTRUCTION AND OPERATION OF A CONSENTED SCHEME. THESE GROUPS ARE SOMETIMES REFERRED TO AS SECTION 42 CONSULTEES.
- THE LOCAL COMMUNITY, WHICH IS DEFINED AS THOSE PEOPLE LIVING OR WORKING WITHIN A DEFINED DISTANCE OF THE ONSHORE INFRASTRUCTURE OR THOSE WHO MAY HAVE AN INTEREST IN THE AREA, FOR EXAMPLE, LOCAL ARCHAEOLOGY GROUPS AND MARINERS AND THE FISHING COMMUNITY OR OTHER NON-STATUTORY GROUPS. THESE ARE SOMETIMES REFERRED TO AS SECTION 47 CONSULTEES.
- THE GENERAL PUBLIC. THESE ARE THOSE PEOPLE BEYOND THE LOCAL COMMUNITY WHO WILL PRIMARILY BE REACHED THROUGH NATIONAL NEWSPAPER ADVERTISEMENTS AND ON THE PROJECT WEBSITE. THESE ARE SOMETIMES REFERRED TO AS SECTION 48 CONSULTEES.

We will carry out targeted activities for each group of consultees mentioned above, however this statement of community consultation (SoCC) specifies the details of how we will consult specifically with the local community.

We recognise that those living, working or having a specific link to the location of the proposed infrastructure will have a key interest. For the introductory consultation in late 2021, this included targeting those within the initial broad North Falls Scoping Area (see Map 2) via newspaper advertising (printed and digital), local press, leaflets delivered to 40,000 addresses and direct emails.

The existing North Falls Scoping Area will be modified to align to the project plans and proposals as they become more refined. North Falls will focus its public consultation on the areas extending one kilometre either side of the locations proposed for landfall and for the above and below ground infrastructure. By selecting these focussed consultation areas, we will ensure that all individuals and stakeholders identified within that minimum distance will be consulted. This approach will guide the refinement of consultation area as the project evolves, for example as route options develop and when the preferred sites for project infrastructure, such as the onshore substation, are identified.

Properties within the focussed consultation area will receive direct communications such as leaflets and notifications from us in the post.

North Falls will also communicate with a wider consultation area, as we recognise that there may be interested individuals or groups who are not within the key public consultation focus area. We are committed to ensuring that those with wider interests still have an opportunity to view and provide feedback on our proposals. We will notify communities within the wider consultation area by advertising in local media and using targeted digital campaigns. Project consultation materials will be published online and available to view and download or request via our contact details.

Throughout the development of our proposals, we will continue to work with local planning authorities to identify any relevant community groups, business organisations and others who should be consulted. As well as the community consultation, we have, and will continue to, engage with range of statutory and non-statutory consultees, including:

- OWNERS, TENANTS AND OCCUPIERS OF THE LAND IDENTIFIED WITHIN THE APPLICATION.
- MPs AND LOCAL COUNCILS (COUNTY, DISTRICT AND PARISH).
- STATUTORY STAKEHOLDERS, SUCH AS NATURAL ENGLAND, THE ENVIRONMENT AGENCY AND THE WILDLIFE TRUSTS.
- MARINE GROUPS AND USERS SUCH AS FISHERIES, PORTS AND THE MARITIME AND COASTGUARD AGENCY.
- LOCAL INTEREST AND COMMUNITY GROUPS, BOTH INSHORE AND WITHIN THE COASTAL AREA WITH A PARTICULAR INTEREST IN SEASCAPE VISUAL AMENITY
- HARD TO REACH GROUPS

We plan for our consultation activity to be accessible to all groups in the community and it will include both online and in-person opportunities for involvement. The approach to consultation outlined in this SoCC covers an inclusive range of communications methods to ensure we are able to conduct an open and meaningful consultation across the community. We recognise that some individuals or groups may have trouble taking part in the consultation process for a range of reasons and therefore

have identified organisations representing hard to reach groups in the consultation area which will be contacted specifically at the start of each consultation (please see Appendix A)

## 11. WHAT WE WILL CONSULT ON

The paramount aim of the public consultation we will undertake for North Falls is to ensure that local communities, other stakeholders and technical consultees are able to effectively follow the progress of the project, understand the content of the plans and provide input or feedback to help shape the proposals.

We held our introductory consultation that so we could gather initial comments from an early stage of the project's development. Each consultation will build on the previous one to help us develop a deeper understanding of key local issues and community concerns, and to be able to take them into account as the project evolves. This will be part of an ongoing dialogue with communities and stakeholders, during which we will welcome input, particularly from people who live or work in the project area and know it well.

We therefore very much encourage communities to share their local knowledge and input into how North Falls may affect them specifically as well as how it may impact the local area and environment. We will be seeking feedback to help develop our proposals including, but not limited to, the following:

- OUR OFFSHORE INFRASTRUCTURE LOCATION AND THE MARINE ENVIRONMENT INCLUDING CONSULTATION WITH THE MARINE MANAGEMENT ORGANISATION (MMO) AND LOCAL COMMERCIAL FISHERIES ORGANISATIONS.
- OUR LANDFALL LOCATION AND SITING OF THE TEMPORARY LANDFALL CONSTRUCTION COMPOUND
- REFINEMENT OF THE ONSHORE CABLE CORRIDOR, TEMPORARY WORKS COMPOUNDS AND ACCESS
- OUR SELECTION PROCESS FOR THE LOCATION OF THE ONSHORE SUBSTATION AND ACCESS ROUTES
- THE TEMPORARY CONSTRUCTION-RELATED IMPACTS AROUND ACTIVITY SUCH AS TRAFFIC MANAGEMENT, NOISE MITIGATION AND THE LOCAL ENVIRONMENT.
- OPERATIONAL IMPACTS THAT WILL BE MORE PERMANENT, FOR EXAMPLE ON THE LOCAL ENVIRONMENT, LANDSCAPE AND VISUAL AMENITY.

At each phase of consultation, we will give the community the opportunity to discuss details of aspects of the North Falls proposals with relevant project team members and utilising a wide range of communication methodologies (listed in Section 12).

Some elements of the project will be relatively fixed, for example the grid connection point once it is received and the offshore site, whereas others have more room for flexibility and therefore can be altered or adapted following stakeholder and community input. The application itself will have in-built flexibility around some aspects of the design, such as the layout of the landfall construction compound, as it will not be finalised until post-consent.

## 12. HOW AND WHERE TO HAVE A SAY

We will employ a range of consultation methodologies –both traditional and online - to ensure there are multiple ways to provide feedback to the project team. These methodologies will include consultation events and meetings, an online consultation portal, a dedicated project freephone line and project email. We will regularly send project news to those on the North Falls mailing list so any interested parties can register their interest via the contact form on the project website. Consultation methodologies will include:

- ONLINE CONSULTATION PORTAL
- FEEDBACK FORMS / QUESTIONNAIRES
- COMMUNITY CONSULTATION EVENTS (COVID SITUATION PERMITTING)
- NEWSLETTERS / FACTSHEETS (ELECTRONIC AND PRINTED VERSIONS)



- DIRECT MAIL (LETTERS, INVITATIONS AND INFORMATION MATERIALS) DELIVERED TO THOSE WITHIN THE CONSULTATION AREA
- DIRECT EMAILS TO THOSE ON THE NORTH FALLS MAILING LIST
- PRINT AND DIGITAL ADVERTISING IN LOCAL NEWSPAPERS (CLACTON AND FRINTON GAZETTE)
- ESTABLISHMENT OF COMMUNITY LIAISON GROUPS AS APPLICABLE
- MEETINGS WITH LOCAL REPRESENTATIVES INCLUDING PARISH, DISTRICT AND COUNTY COUNCILLORS
- PROJECT SPECIFIC WEBSITE: [HTTPS://WWW.NORTHFALLSOFFSHORE.COM/](https://www.northfallsoffshore.com/)
- SOCIAL MEDIA INCLUDING INSTAGRAM @NORTHFALLS
- DIRECT 24-HOUR PHONE LINE: 0800 254 5340
- PROJECT-SPECIFIC EMAIL ADDRESS: [CONTACT@NORTHFALLSOFFSHORE.COM](mailto:CONTACT@NORTHFALLSOFFSHORE.COM)

While the Covid-19 pandemic and associated Government rules and health measures prevented public events, including face-to-face consultation activities, it is anticipated that by the time North Falls launches its next consultation phase, we will be able to hold consultation events at venues close to proposed onshore infrastructure sites. The safety of our consultees will be a priority with any face-to-face consultation, and we will follow Government guidelines in place at the time. Given the fact many people are now also used to the flexibility of being able to comment to proposals in their own time, we will maintain our online consultation in parallel to the in-person events. If online consultation replaces what in the past would have been undertaken in the local area, additional measures will be taken to make sure that those in harder to reach groups are not disadvantaged in terms of having their views considered.

## 13. SUBMITTING FEEDBACK AND WHAT HAPPENS NEXT

Meaningful two-way consultation on the proposed plans will be integral to our decision-making process in terms of the final proposal development we put forward in our application.

While we will welcome feedback at any time, there will be specific consultation periods where we will be asking for comments related to defined elements of our proposals. Consultation periods will be widely advertised with opening and closing dates for input highlighted.

After the closing date of each consultation phase, we will assess and consider comments carefully and look at how they can help us shape the final proposals. We will summarise the consultation activity and outcomes via our consultation portal and through summary consultation reports, also made available online. Commonly asked questions, and answers, will be posted on the website and expanded with new questions and answers as need arises. We will provide information on how we have considered comments and integrated community and stakeholder feedback to track the influence of the consultation activity on the project proposals.

## 14. HOW TO CONTACT US

There are a number of ways you can find out more about the project, get in touch with the project team or register details to receive updates:



**Email:** [contact@northfalls.com](mailto:contact@northfalls.com)



**24-hour freephone line:** 0800 254 5340



**Freepost address:** FREEPOST North Falls



**Website:** [www.northfallsoffshore.com](http://www.northfallsoffshore.com)

**Consultation portal:** <https://consultation.northfallsoffshore.com/>



Landowners can contact the project's land agent Dalcour Maclaren:

**Address:** 20 Hollingworth Court, Turkey Mill, Ashford Road Maidstone, Kent ME14 5PP

**Email:** [northfalls@dalcourmaclaren.com](mailto:northfalls@dalcourmaclaren.com)

**Telephone:** 01622 623025



Fishing industry stakeholders can contact our fisheries consultants Brown & May Marine Ltd:

**Address:** Progress Way, Mid Suffolk Business Park Eye, Suffolk IP23 7HU

**Email:** [freya@brownmay.com](mailto:freya@brownmay.com)

**Telephone:** 01379 772871

## **APPENDIX A. HARD TO REACH GROUPS**

List of hard to reach groups who will be contacted individually

Insert table with input from Council



**NORTH FALLS**

*Offshore Wind Farm*



**RWE**

## **HARNESSING THE POWER OF NORTH SEA WIND**

*North Falls Offshore Wind Farm is being developed on a site more than 20 kilometres off the UK coast in the southern North Sea and covers a total area of 150 km<sup>2</sup>. It is an extension project to the adjacent 504-megawatt Greater Gabbard Offshore Wind Farm, opened in 2013.*

*It is being developed by a joint venture company owned equally by SSE Renewables and RWE.*

*If you would like to contact the project team, please email [contact@northfallsoffshore.com](mailto:contact@northfallsoffshore.com)*

© 2020 All Rights Reserved